

**INVARIANT MEASURES
ON THE SPACE OF MEASURED LAMINATIONS
FOR SUBGROUPS OF MAPPING CLASS GROUP**

INHYEOK CHOI AND DONGRYUL M. KIM

ABSTRACT. Let Γ be a non-elementary subgroup of the mapping class group of a surface. In this paper, we study the dynamics of Γ -action on the space of measured laminations. We prove that on the space \mathcal{R}_Γ of Γ -recurrent measured laminations, there is at most one Γ -invariant Radon measure (up to scaling). In particular, when Γ is of divergence type, we show that the Γ -action on \mathcal{R}_Γ is uniquely ergodic, by explicitly constructing the ergodic measure. This generalizes Lindenstrauss–Mirzakhani’s result and Hamenstädt’s result for the full mapping class group, in which case the ergodic measure is the Thurston measure. When Γ is convex cocompact, we also prove that every invariant ergodic Radon measure on the space of all measured laminations is either the unique measure on \mathcal{R}_Γ , or a counting measure on the orbit of a non-recurrent measured lamination.

Our method is geometric and does not rely on continuous or homogeneous flows on the ambient space or a dynamical system associated with a finite measure space. This leads to a unifying approach for various metric spaces, including Teichmüller spaces and partially CAT(−1) spaces.

CONTENTS

1.	Introduction	1
2.	Teichmüller theory	14
3.	Hubbard–Masur coordinates for measured laminations	17
4.	Squeezing property of pseudo-Anosov axes	18
5.	Contracting and squeezing isometries	20
6.	Patterson–Sullivan theory with squeezing isometries	29
7.	Rigidity of ergodic invariant Radon measures	33
8.	Existence of ergodic invariant Radon measures	49
9.	Subgroups of mapping class groups and measure classification	52
10.	Classification of orbit closures	54
	References	57

1. INTRODUCTION

Let S be a connected orientable surface of genus g and with p punctures, where $3g - 3 + p \geq 1$, i.e., S is a finite-type surface which is not a sphere with at most 3 punctures or a torus. The Teichmüller space $\mathcal{T} = \mathcal{T}(S)$ is the space of all marked Riemann surface structures on S , or equivalently, the space of all marked hyperbolic structures on S . The mapping class

group $\text{Mod}(S)$ is the group of isotopy classes of orientation-preserving self-diffeomorphisms of S . The Teichmüller space \mathcal{T} is equipped with a natural metric called the Teichmüller metric, under which the natural action of $\text{Mod}(S)$ is isometric. The $\text{Mod}(S)$ -action is properly discontinuous, and its quotient $\mathcal{M} := \text{Mod}(S) \backslash \mathcal{T}$ is the moduli space of Riemann surfaces.

In Thurston's theory on surfaces ([FLP79], [Thu22]), the mapping class group and the Teichmüller space of S are closely related to *measured laminations* on S . Fixing a complete hyperbolic structure on S of finite area, a geodesic lamination on S is a compact subset of S foliated by simple geodesics. A *measured lamination* is a geodesic lamination equipped with a transverse measure. This notion generalizes simple closed curves.

The space of measured laminations on S is denoted by $\mathcal{ML} = \mathcal{ML}(S)$. Endowing \mathcal{ML} with the weak*-topology, it turns out that \mathcal{ML} is homeomorphic to $\mathbb{S}^{6g-7+2p} \times (0, +\infty) \simeq \mathbb{R}^{6g-6+2p} \setminus \{0\}$, where the $(0, +\infty)$ -component corresponds to the scaling of transverse measures on each geodesic lamination. Here, the unit sphere $\mathbb{S}^{6g-7+2p}$ is identified with the space $\mathcal{PML} = \mathcal{PML}(S)$ of *projective measured laminations* on S . The space \mathcal{PML} can be regarded as the boundary of \mathcal{T} as shown by Thurston ([Thu88], [Thu97]), and hence \mathcal{PML} is also referred to as the *Thurston boundary*.

Another interpretation of \mathcal{ML} is given by the celebrated theorem of Hubbard and Masur [HM79]. Fixing a Riemann surface structure $x \in \mathcal{T}$, the Hubbard–Masur theorem asserts that the space \mathcal{ML} is homeomorphic to the space of holomorphic quadratic differentials $\mathcal{Q}(S, x)$ on the Riemann surface (S, x) . Each quadratic differential $q \in \mathcal{Q}(S, x)$ determines a Teichmüller geodesic ray emanating from $x \in \mathcal{T}$. The projective class $[\xi] \in \mathcal{PML}$ of the measured lamination $\xi \in \mathcal{ML}$ corresponding to q , given by the Hubbard–Masur theorem, is an accumulation point of this Teichmüller geodesic ray.

The space \mathcal{ML} admits a natural $\text{Mod}(S)$ -action, which encodes the global geometry and dynamics of the Teichmüller space. Indeed, the induced $\text{Mod}(S)$ -action on \mathcal{PML} is a continuous extension of the $\text{Mod}(S)$ -action on \mathcal{T} . Using the train track coordinates on \mathcal{ML} , or a natural symplectic structure on \mathcal{ML} , Thurston defined the $\text{Mod}(S)$ -invariant measure

$$\mu_{\text{Th}} \quad \text{on} \quad \mathcal{ML}$$

which is in the Lebesgue measure class [Thu22]. The measure μ_{Th} is now called *Thurston measure*, and the $\text{Mod}(S)$ -action on $(\mathcal{ML}, \mu_{\text{Th}})$ is ergodic as shown by Masur [Mas85, Theorem 2]. The Thurston measure has been a central object in the study of the geometry and dynamics of $\text{Mod}(S)$ and \mathcal{T} . For example, Mirzakhani [Mir08b], Athreya–Bufetov–Eskin–Mirzakhani [ABEM12], and Erlandsson–Souto [ES16] studied counting and equidistribution of $\text{Mod}(\Sigma)$ -orbits using μ_{Th} . It also played a major role in Mirzakhani's ergodic theory of Thurston's earthquake flow [Mir08a].

1.1. Measure classification for full $\text{Mod}(S)$: finite covolume. It is natural to ask whether the Thurston measure is the only measure on \mathcal{ML} that is suited to the study of the dynamics of $\text{Mod}(S)$. Lindenstrauss and Mirzakhani [LM08], and Hamenstädt [Ham09], independently classified all $\text{Mod}(S)$ -invariant ergodic Radon measures on \mathcal{ML} . While the $\text{Mod}(S)$ -action on \mathcal{ML} is not uniquely ergodic due to the cuspidal feature of $\text{Mod}(S)$ or of $\mathcal{M} = \text{Mod}(S) \setminus \mathcal{T}$, the Thurston measure turns out to be the unique $\text{Mod}(S)$ -invariant Radon measure on the region where the Teichmüller geodesic flow shows interesting dynamics.

More precisely, using the identification $\mathcal{ML} = \mathcal{Q}(S, x)$ provided by the Hubbard–Masur theorem, we define the *recurrence locus* for $\text{Mod}(S)$ as the set $\mathcal{R}_{\text{Mod}(S)} \subset \mathcal{ML}$ of all measured laminations $\xi \in \mathcal{ML}$ such that the Teichmüller geodesic ray determined by the corresponding quadratic differential $q_\xi \in \mathcal{Q}(S, x)$ recurs to a compact subset in the quotient $\mathcal{M} = \text{Mod}(S) \setminus \mathcal{T}$. One of the main steps in the measure classification by both Lindenstrauss–Mirzakhani and Hamenstädt is as follows.

Theorem 1.1 ([LM08], [Ham09]). *Let μ be a $\text{Mod}(S)$ -invariant Radon measure on $\mathcal{R}_{\text{Mod}(S)}$. Then μ is a constant multiple of μ_{Th} .*

In the exceptional case when S is a once-punctured torus or a 4-punctured sphere (i.e., $3g - 3 + p = 1$), homogeneous dynamics comes into play. In this case, the Teichmüller space is equal to the hyperbolic plane \mathbb{H}^2 and $\text{Mod}(S)$ is equal to $\text{SL}(2, \mathbb{Z})$. Then the $\text{Mod}(S)$ -action on \mathcal{ML} corresponds to the $\text{SL}(2, \mathbb{Z})$ -action on the *horospherical foliation* of the unit tangent bundle $\text{T}^1 \mathbb{H}^2$, or the *unipotent flow (or horocyclic flow)* on $\text{PSL}(2, \mathbb{Z}) \setminus \text{PSL}(2, \mathbb{R})$.

Furstenberg first proved that the unipotent flow on $\Gamma \setminus \text{PSL}(2, \mathbb{R})$ is uniquely ergodic with respect to the Haar measure when $\Gamma < \text{PSL}(2, \mathbb{R})$ is a uniform lattice [Fur73]. This was extended by Veech to uniform lattices in semi-simple Lie groups [Vee77]. Generalizing these results, Dani proved for lattices in reductive groups that the Haar measure is the unique invariant ergodic Radon measure on the recurrence locus ([Dan78], [Dan81]).

1.2. Measure classification for subgroups: infinite covolume. Given Theorem 1.1, one can seek an analogous measure classification on \mathcal{ML} for general subgroups of $\text{Mod}(S)$, as asked by Lindenstrauss and Mirzakhani [LM08, Remark 1.4(2)]. We aim to study this question in this paper.

Before we proceed, let us mention two important ingredients for both Lindenstrauss–Mirzakhani’s and Hamenstädt’s complete measure classification for the full $\text{Mod}(S)$ -action. First, the $\text{Mod}(S)$ -action has finite covolume with respect to the Masur–Veech volume form on the fiber bundle $\mathcal{Q}^1 \mathcal{T}$ of unit-area holomorphic quadratic differentials over \mathcal{T} ([Mas82a], [Vee82]). The bundle $\mathcal{Q}^1 \mathcal{T}$ can be regarded as the unit cotangent bundle over \mathcal{T} , and the Masur–Veech volume is also induced from the Thurston measure. Second, the Teichmüller horocyclic flow on the quotient bundle $\text{Mod}(S) \setminus \mathcal{Q}^1 \mathcal{T}$ exhibits some non-divergence, as proved by Minsky and Weiss [MW02].

On the other hand, the quotient $\Gamma \backslash \mathcal{Q}^1 \mathcal{T}$ has infinite volume for a general subgroup $\Gamma < \text{Mod}(S)$, and it is hard to expect the non-divergence of horocyclic flows on $\Gamma \backslash \mathcal{Q}^1 \mathcal{T}$. Even for the case that S is a once-punctured torus or a 4-punctured sphere, when \mathcal{T} is the hyperbolic plane, neither holds true. They serve as obstructions to applying the arguments of [LM08] or [Ham09] to subgroups of $\text{Mod}(S)$.

On the hyperbolic plane \mathbb{H}^2 , the first infinite-covolume examples studied for this problem are due to Burger [Bur90]. Burger considered a *convex cocompact* subgroup $\Gamma < \text{PSL}(2, \mathbb{R})$ whose critical exponent is strictly bigger than $1/2$ and showed that there exists a unique Γ -invariant ergodic Radon measure on the recurrent horospherical foliation of \mathbb{H}^2 . This was later generalized by Roblin [Rob03] for discrete groups of isometries on $\text{CAT}(-1)$ spaces under assumptions on finite Bowen–Margulis–Sullivan measures and the existence of certain coverings.

Let us get back to the Teichmüller space \mathcal{T} , where tools from homogeneous dynamics or negatively curved geometry do not apply immediately. Before presenting our precise statements that require the construction of a specific Radon measure, we summarize our measure classification results for non-elementary $\Gamma < \text{Mod}(S)$:

- (1) There exists at most one Γ -invariant Radon measure on \mathcal{ML} supported on the recurrence locus for Γ .
- (2) When Γ is of divergence type, the Γ -action on the recurrence locus is uniquely ergodic.¹
- (3) When Γ is convex cocompact subgroup, we classify all Γ -invariant Radon measures on \mathcal{ML} .

As we will see later, we in fact develop machineries for a general metric space with a partial hyperbolicity, without any assumption on its global geometry. We use them to deduce versions of (1) and (2) in that setting.

1.3. Main statements. We mainly consider a *non-elementary* subgroup $\Gamma < \text{Mod}(S)$, i.e., Γ is not virtually cyclic and contains a pseudo-Anosov mapping class. There exists $0 < \delta_\Gamma < +\infty$, called the critical exponent of Γ , so that δ_Γ is the abscissa of convergence of the Poincaré series $s \mapsto \sum_{g \in \Gamma} e^{-sd(x, gx)}$, for (any) $x \in \mathcal{T}$. The finiteness of the critical exponent is due to Kaimanovich and Masur [KM96], and its positivity is due to McCarthy [McC85]. We say that Γ is of *divergence type* if the Poincaré series diverges at $s = \delta_\Gamma$. Otherwise, Γ is said to be of convergence type.

Generalizing the ergodicity of the $\text{Mod}(S)$ -action on $(\mathcal{ML}, \mu_{\text{Th}})$ due to Masur [Mas85], we construct a Radon measure for non-elementary subgroups of $\text{Mod}(S)$ and show its ergodicity.

Theorem 1.2 (Ergodicity). *Let $\Gamma < \text{Mod}(S)$ be a non-elementary subgroup of divergence type. Then there exists a nonzero, Γ -invariant Radon measure*

¹By unique ergodicity, we mean that there exists a unique ergodic invariant Radon measure up to a constant multiple.

μ_Γ on \mathcal{ML} such that

the Γ -action on $(\mathcal{ML}, \mu_\Gamma)$ is ergodic.

Theorem 1.2 also applies to certain normal subgroups of a divergence-type group, which are not necessarily of divergence type. See Theorem 8.2 and Section 9.2.

The measure μ_Γ is very explicit. Delaying its construction, we first discuss unique ergodicity, which is the main result of this paper. Similar to $\mathcal{R}_{\text{Mod}(S)}$, we define the *recurrence locus* $\mathcal{R}_\Gamma \subset \mathcal{ML}$ for a subgroup $\Gamma < \text{Mod}(S)$ as follows: fixing $x \in \mathcal{T}$,

$$\mathcal{R}_\Gamma := \left\{ \xi \in \mathcal{ML} : \begin{array}{l} \text{Teichmüller geodesic ray given by } q_\xi \in \mathcal{Q}(S, x) \\ \text{recurs to a compact subset in } \Gamma \backslash \mathcal{T} \end{array} \right\}$$

where $q_\xi \in \mathcal{Q}(S, x)$ is the quadratic differential on the Riemann surface (S, x) corresponding to $\xi \in \mathcal{ML}$, given by the Hubbard–Masur theorem. This set is Γ -invariant and does not depend on the choice of $x \in \mathcal{T}$. We construct μ_Γ so that it is Γ -invariant and is supported on the recurrence locus \mathcal{R}_Γ . Moreover, we show that μ_Γ possesses unique ergodicity.

Theorem 1.3 (Unique ergodicity). *Let $\Gamma < \text{Mod}(S)$ be a non-elementary subgroup. Suppose that there exists a nonzero, Γ -invariant Radon measure μ on \mathcal{ML} that is supported on \mathcal{R}_Γ . Then Γ is of divergence type and*

μ is a constant multiple of μ_Γ .

In other words,

- (1) *if Γ is of convergence type, then there does not exist a nonzero, Γ -invariant Radon measure on \mathcal{R}_Γ .*
- (2) *if Γ is of divergence type, then*

the Γ -action on $(\mathcal{R}_\Gamma, \mu_\Gamma)$ is uniquely ergodic.

The full mapping class group $\text{Mod}(S)$ is of divergence type thanks to [Mas82a] and [Vee82]. It contains many independent pseudo-Anosov elements (cf. [Thu88]), so it is non-elementary. Thus, Theorem 1.3 extends Theorem 1.1.

For a subgroup $\Gamma < \text{Mod}(S)$ of the mapping class group, Γ is said to have *non-arithmetic* length spectrum if the Teichmüller (stable) translation lengths of pseudo-Anosov elements of Γ generate a dense additive subgroup of \mathbb{R} . As in many other measure classification results (e.g. [Rob03]), non-arithmeticity of length spectrum is an essential ingredient in the classification. Indeed, such a measure classification is not true without non-arithmeticity in general, as in Remark 1.12. For this reason, our theorems crucially use our another paper [CK26b], whose main theorem is as follows:

Theorem 1.4 ([CK26b, Theorem 1.1]). *Let $\Gamma < \text{Mod}(S)$ be a non-elementary subgroup. Then Γ has non-arithmetic length spectrum.*

Our approach to Theorem 1.3 is to show that μ is quasi-invariant under the scaling of the measured laminations by the stretch factors of all the pseudo-Anosov mapping classes in Γ . This step does not require the non-arithmeticity. Once we have the non-arithmeticity, we deduce the quasi-invariance under the scaling by any positive real number. It is now standard that once we have this quasi-invariance, μ must be of the desired form. In a general abstract setting, this implication from the quasi-invariance was studied under the name of Maharam measures by Aaronson, Nakada, Sarig, and Solomyak [ANSS02, 0.1 Basic Lemma]. See also [Sar04] for the more explicit case of horocyclic flows on abelian covers of a closed hyperbolic surface.

Example 1.5 (Divergence-type subgroups). Examples of divergence-type subgroups of $\text{Mod}(S)$ include (1) the full group $\text{Mod}(S)$ and (2) convex cocompact subgroups as discussed in more detail below.

(3) Stabilizers of many Teichmüller disks are other sources of subgroups of divergence type, which are also referred to as Veech groups. To give explicit examples of pseudo-Anosovs, Thurston considered in [Thu88] the subgroup $\Gamma < \text{Mod}(S)$ that is generated by multitwists about a filling pair of multicurves on S . Then he showed that Γ stabilizes a Teichmüller disk, which is an isometrically embedded copy of \mathbb{H}^2 in \mathcal{T} . Namely, Γ is a geometrically finite Fuchsian group and is of divergence type with respect to the Teichmüller metric [Pat76]. Later, Veech constructed many other families of lattice stabilizers of Teichmüller disks [Vee89]. Note that these subgroups contain multitwists and are not convex cocompact, and also that any finitely generated Veech group is of divergence type. As Teichmüller disks are much smaller than the ambient Teichmüller space, they are “infinite-covolume subgroups”.

(4) Given a collection $\mathcal{C} = \{f_1, f_2, \dots\} \subset \text{Mod}(S)$ of independent pseudo-Anosovs, a ping-pong argument using the contracting properties of f_i 's guarantees the following: for suitably large $n_i \in \mathbb{N}$ for each i , $\langle f_i^{n_i} : f_i \in \mathcal{C} \rangle$ becomes a free subgroup of $\text{Mod}(S)$ (cf. [FM02], [Mos02]). When \mathcal{C} is finite, the resulting subgroup is convex cocompact. When \mathcal{C} is infinite, one can choose n_i 's carefully so that the resulting subgroup is of divergence type, which is not convex cocompact since it is not finitely generated.

(5) Moreover, many divergence-type subgroups can be constructed using covering between surfaces [BS24].

(6) Being of divergence type is also related to the growth of orbits. Concretely, when a non-elementary subgroup $\Gamma < \text{Mod}(S)$ has *purely exponential growth*, i.e., $\#\{g \in \Gamma : d(x, gx) \leq R\} \asymp e^{\delta_\Gamma R}$ as $R \rightarrow +\infty$, for (any) $x \in \mathcal{T}$, it is easy to see that Γ is of *divergence type*. This is indeed the case for $\text{Mod}(S)$ [ABEM12, Theorem 1.2] and for convex cocompact subgroups [Coo93, Théorème 7.2] (cf. [Gek13, Theorem 1.1]).

This motivated the work of Schapira and Tapie [ST21], and of Yang [Yan19], on strongly positively recurrent (SPR) groups, also known as statistically convex cocompact (SCC) groups. These groups are known to have purely exponential growth [Yan19, Theorem B] (cf. [ST21, Theorem 7.26]), and therefore they are of *divergence type*. Yang also constructed many examples of SCC subgroups in [Yan19]. We will not define the notion of SPR=SCC groups, but let us mention that there are non-convex-cocompact examples which are SCC [Yan19, Proposition 6.6]. Our theory applies to these examples as well.

We now come back to our discussion of measure classifications. Farb and Mosher [FM02] introduced another important family of subgroups of divergence type. A finitely generated $\Gamma < \text{Mod}(S)$ is called *convex cocompact* if it has a quasi-convex orbit in \mathcal{T} . We establish a measure classification for Γ on the *entire* space of measured laminations.

Theorem 1.6 (Convex cocompact subgroups). *Let $\Gamma < \text{Mod}(S)$ be a non-elementary convex cocompact subgroup. Then every Γ -invariant ergodic Radon measure on \mathcal{ML} is either*

$$\mu_\Gamma \quad \text{or} \quad \sum_{g \in \Gamma} D_{g \cdot \xi} \text{ for some } \xi \in \mathcal{ML} \setminus \mathcal{R}_\Gamma$$

up to scaling, where $D_{g \cdot \xi}$ is the Dirac measure at $g \cdot \xi \in \mathcal{ML} \setminus \mathcal{R}_\Gamma$.

In Theorem 10.1, we also obtain the classification of Γ -orbit closures in \mathcal{ML} . This is equivalent to considering the quotient $\Gamma \backslash \mathcal{Q}^1 \mathcal{T}$ and classifying stable manifolds under the Teichmüller geodesic flow.

Our complete measure classification for convex cocompact Γ is based on explicit understanding of the Γ -action on $\mathcal{ML} \setminus \mathcal{R}_\Gamma$. It would be of independent interest to understand such an action for a general subgroup, which is also relevant to the structure of limit sets in the Thurston boundary \mathcal{PML} .

Remark 1.7. We note that Theorem 1.6 can also be studied using the finiteness of the Bowen–Margulis–Sullivan (BMS) measures for convex cocompact subgroups due to Gekhtman [Gek13], and their strong geometric properties deduced from quasi-convexity of orbits in \mathcal{T} . Indeed, Roblin provided in [Rob03] a strategy based on finite BMS measures and certain geometric conditions. The authors appreciate Gekhtman and Oh for sharing this viewpoint with them. It would be interesting to do this alternative approach and see any byproducts.

1.4. Explicit construction of invariant Radon measures. We now explain the construction of the measure μ_Γ for non-elementary $\Gamma < \text{Mod}(S)$.

Fixing a basepoint $x \in \mathcal{T}$, a Borel probability measure ν on \mathcal{PML} is called a δ_Γ -dimensional conformal measure of Γ if for every $g \in \Gamma$,

$$\frac{dg_* \nu}{d\nu}([\xi]) = \left(\sqrt{\frac{\text{Ext}_x(\xi)}{\text{Ext}_{gx}(\xi)}} \right)^{\delta_\Gamma} \quad \text{for a.e. } [\xi] \in \mathcal{PML}$$

where $\text{Ext}_x(\xi)$ denotes the extremal length of $\xi \in \mathcal{ML}$ on the Riemann surface (S, x) (see Equation (3.1) for the precise definition). Such a measure was constructed by Athreya–Bufetov–Eskin–Mirzakhani [ABEM12] for $\Gamma = \text{Mod}(S)$, by Gekhtman [Gek13] for Γ convex cocompact, and by Coulon [Cou24] and by Yang [Yan24] in general.

As we fix a basepoint $x \in \mathcal{T}$, we can explicitly write the homeomorphism $\mathcal{ML} \rightarrow \mathcal{PML} \times (0, +\infty)$ using the Hubbard–Masur theorem as follows:

$$\xi \mapsto \left([\xi], \sqrt{\text{Ext}_x(\xi)} \right).$$

For a non-elementary subgroup $\Gamma < \text{Mod}(S)$ and a δ_Γ -dimensional conformal measure ν of Γ on \mathcal{PML} , we define the Radon measure μ_ν on \mathcal{ML} by

$$(1.1) \quad d\mu_\nu(\xi) := \left(\sqrt{\text{Ext}_x(\xi)} \right)^{\delta_\Gamma - 1} \cdot d\nu([\xi]) d\text{Leb}_{\mathbb{R}} \left(\sqrt{\text{Ext}_x(\xi)} \right).$$

It follows from the conformality of ν that μ_ν is Γ -invariant. Moreover, while the conformal measure ν depends on the choice of $x \in \mathcal{T}$, the measure μ_ν is independent of x .

When $\Gamma < \text{Mod}(S)$ is a non-elementary subgroup of divergence type, Coulon [Cou24] and Yang [Yan24] showed that the δ_Γ -dimensional conformal measure ν of Γ is unique. Hence, we write

$$\mu_\Gamma := \mu_\nu \quad \text{on} \quad \mathcal{ML}$$

in this case. Furthermore, μ_Γ is supported on the recurrence locus \mathcal{R}_Γ .

1.5. Horospherical foliations of CAT(−1) spaces. Before discussing the proof, we present an application to CAT(−1) spaces.

Let X be a proper geodesic CAT(−1) space. Following [Rob03], the space SX of isometries $\mathbb{R} \rightarrow X$ serves as the unit tangent bundle over X . It admits a geodesic flow $SX \curvearrowright \mathbb{R}$, which we denote by $a_t : SX \rightarrow SX$ for $t \in \mathbb{R}$. For $u \in SX$, its stable horosphere (or stable manifold) is the set $H^-(u)$ of $v \in SX$ such that the distance between ua_t and va_t tends to 0 as $t \rightarrow +\infty$. Stable horospheres form a foliation on SX , called the *horospherical foliation* of X . The space of its leaves is denoted by \mathcal{H} , which admits a natural action of the isometry group $\text{Isom}(X)$.

Roblin studied measure classification for discrete subgroups of $\text{Isom}(X)$, acting on \mathcal{H} . The notions of non-elementary and divergence-type subgroups are defined analogously. For a discrete subgroup $\Gamma < \text{Isom}(X)$, its recurrence locus $\mathcal{R}_\Gamma \subset \mathcal{H}$ is also defined similarly:

$$\mathcal{R}_\Gamma := \{H^-(u) \in \mathcal{H} : ua_t \text{ recurs to a compact subset in } \Gamma \backslash X \text{ as } t \rightarrow +\infty\}.$$

We say that Γ has *non-arithmetic* length spectrum if the (stable) translation lengths of elements in Γ generate a dense additive subgroup of \mathbb{R} . Examples include the following cases: let $\Gamma < \text{Isom}(X)$ be non-elementary and denote by $\Lambda(\Gamma) \subset \partial X$ its limit set, the set of accumulation points of a Γ -orbit in X .

- (1) $\Gamma \backslash X$ is a negatively curved surface [Dal99],

- (2) X is a rank-one symmetric space [Kim06].
- (3) $\Lambda(\Gamma)$ possesses a non-singleton connected component [Bou95].
- (4) Γ contains a parabolic isometry [DP98].

Theorem 1.8 (CAT(-1) spaces). *Let X be a proper geodesic CAT(-1) space and $\Gamma < \text{Isom}(X)$ a non-elementary discrete subgroup. Suppose that*

- (1) Γ is of divergence type, and
- (2) Γ has non-arithmetic length spectrum.

Then

the Γ -action on \mathcal{R}_Γ is uniquely ergodic.

An analogous problem was extensively studied for rank-one symmetric spaces; see Burger [Bur90], Roblin [Rob03], Sarig [Sar04], Ledrappier–Sarig [LS07], Landesberg–Lindenstrauss [LL22], Landesberg–Lee–Lindenstrauss–Oh [LLLO23] etc. For a general CAT(-1) space, it was proved by Roblin [Rob03] under a stronger assumption that Γ has a finite Bowen–Margulis–Sullivan measure and guarantees existence of a certain covering. The unique ergodic measures are called the Burger–Roblin measures in these settings.

Our novelty in this CAT(-1)-setting is removing those finiteness and covering assumptions, which was possible because we do not rely on mixing of continuous flows or certain dynamical systems with finite measures.

In [CK26a], we extend our techniques further to classify horospherical invariant measures on higher-rank homogeneous spaces of infinite volume. This resolves open problems proposed by Landesberg–Lee–Lindenstrauss–Oh [LLLO23] and by Oh [Oh25]. Such a higher-rank homogeneous space is CAT(0) and the plethora of higher dimensional flats forbids negatively curved geometry, even partially. Still, our techniques developed in this paper can be extended further in that setting by employing more geometric aspects of certain infinite covolume discrete subgroups of Lie groups.

1.6. More examples. Let us mention one interesting families of examples, in addition to the mapping class groups and CAT(-1) groups. In [GS19], Genevois and Stocker considered a geodesically complete proper CAT(0) space X with a point with a CAT(-1) neighborhood, and a non-elementary subgroup $\Gamma < \text{Isom}(X)$ acting geometrically on X . They proved that Γ contains a contracting isometry whose quasi-axis passes through the aforementioned CAT(-1) neighborhood several times. In fact, this contracting isometry is squeezing (see below for the definition). Meanwhile, since Γ acts non-elementarily and geometrically on X , it is necessarily of divergence type [Yan19, Theorem B].

1.7. Metric spaces with squeezing isometries. Our proofs of Theorem 1.2, Theorem 1.3, and Theorem 1.8 are based on the special geometric feature of the axis of a pseudo-Anosov mapping class and the axis of a loxodromic isometry on a CAT(-1) space, which we call *squeezing property* in this paper.

In the rest of the introduction, let (X, d) be a proper geodesic metric space. For a geodesic $\gamma \subset X$, we denote by $\pi_\gamma(\cdot)$ the *nearest-point projection* map onto γ . We consider two notions of hyperbolicity for γ .

- We say that a geodesic $\gamma \subset X$ is *contracting* if there exists $K > 0$ such that, for every geodesic $\eta \subset X$, points that are K -deep in the convex hull of $\pi_\gamma(\eta)$ are K -close to η .
- We say that a geodesic $\gamma \subset X$ is *squeezing* if for each $\epsilon > 0$ there exists $K = K(\epsilon) > 0$ such that, for every geodesic $\eta \subset X$, points that are K -deep in the convex hull of $\pi_\gamma(\eta)$ is ϵ -close to η .

We say that an isometry $g \in \text{Isom}(X)$ is contracting (squeezing, resp.) if it admits a contracting (squeezing, resp.) axis. The squeezing property can be regarded as a quantitative version of the contracting property. See Figure 1 for a rough sketch, and Section 5 for precise definitions.

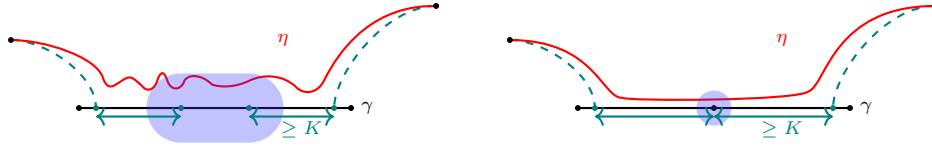


FIGURE 1. A contracting geodesic (left) and a squeezing geodesic (right)

It is well known that every geodesic in a $\text{CAT}(-1)$ space is squeezing. Hence, every loxodromic isometry is squeezing there. Furthermore, in the mapping class group viewed as the isometry group of Teichmüller space, every pseudo-Anosov mapping class is contracting due to Minsky [Min96], and moreover, it is squeezing. See Section 4.1 for further context.

We prove the aforementioned results for Teichmüller spaces and $\text{CAT}(-1)$ spaces by studying ergodic theory under the presence of squeezing isometries. We mainly consider a *non-elementary* subgroup $\Gamma < \text{Isom}(X)$, i.e., a non-virtually-cyclic subgroup with a contracting isometry acting properly on X . The notion of divergence-type is defined analogously to the one for subgroups of $\text{Mod}(S)$. We say that the *squeezing spectrum* of Γ

$$\text{Spec}_{sq}(\Gamma) := \{\text{translation length of } g : g \in \Gamma \text{ is squeezing}\} \subset \mathbb{R}$$

is *non-arithmetic* if $\text{Spec}_{sq}(\Gamma)$ generates a dense additive subgroup of \mathbb{R} .

It remains to define an object corresponding to the space of measured laminations on a surface and to the horospherical foliation of a $\text{CAT}(-1)$ space. We consider the product space ²

$$\mathcal{H} := \partial^h X \times \mathbb{R}$$

²We use the same notation as in the $\text{CAT}(-1)$ case, because this is precisely the horospherical foliation when X is $\text{CAT}(-1)$.

where $\partial^h X$ is the horofunction boundary of X . Each point in $\partial^h X$ is identified with a 1-Lipschitz cocycle on X , and this induces a natural $\text{Isom}(X)$ -action on the space \mathcal{H} : the action on the \mathbb{R} -component is given by the cocycle determined by the $\partial^h X$ -component. See Section 5.6 for details.

Theorem 1.2 will follow from the following more general statement.

Theorem 1.9 (Ergodicity). *Let (X, d) be a proper geodesic metric space and let $\Gamma < \text{Isom}(X)$ be a non-elementary subgroup. Suppose that*

- (1) Γ is of divergence type, and
- (2) the squeezing spectrum $\text{Spec}_{sq}(\Gamma)$ is non-arithmetic.

Then there exists a nonzero, Γ -invariant Radon measure μ_Γ on \mathcal{H} such that the Γ -action on $(\mathcal{H}, \mu_\Gamma)$ is ergodic.

Remark 1.10. As for Theorem 1.2, our ergodicity result applies to normal subgroups of a divergence-type group, which are not necessarily of divergence type (Theorem 8.2).

As in the setting of Teichmüller spaces, the measure μ_Γ is explicitly constructed, and it turns out that μ_Γ is supported on the region corresponding to the recurrence locus. This region is given by

$$\Lambda_c(\Gamma) \times \mathbb{R} \subset \mathcal{H}$$

where $\Lambda_c(\Gamma) \subset \partial^h X$ is the *conical limit set* of Γ (Definition 5.17). Delaying the construction of μ_Γ , we state the unique ergodicity theorem, from which Theorem 1.3 and Theorem 1.8 follow.

Theorem 1.11 (Unique ergodicity). *Let (X, d) be a proper geodesic metric space and let $\Gamma < \text{Isom}(X)$ be a non-elementary subgroup such that $\text{Spec}_{sq}(\Gamma)$ is non-arithmetic. Suppose that there exists a nonzero, Γ -invariant Radon measure μ on \mathcal{H} supported on $\Lambda_c(\Gamma) \times \mathbb{R}$. Then Γ is of divergence type and*

$$\mu \text{ is a constant multiple of } \mu_\Gamma.$$

In other words,

- (1) *if Γ is of convergence type, then there does not exist a nonzero, Γ -invariant Radon measure on $\Lambda_c(\Gamma) \times \mathbb{R}$.*
- (2) *if Γ is of divergence type, then*

$$\text{the } \Gamma\text{-action on } (\Lambda_c(\Gamma) \times \mathbb{R}, \mu_\Gamma) \text{ is uniquely ergodic.}$$

Remark 1.12. We note that non-arithmeticity of the squeezing spectrum is essential. In general, the horospherical foliation is not uniquely ergodic without non-arithmeticity: there are uncountably many mutually singular invariant measures on the horospherical foliation of a standard Cayley graph of a free group.

For non-elementary subgroups of mapping class groups, non-arithmeticity was proved in our another paper [CK26b], together with our observation that pseudo-Anosov mapping classes are squeezing (Proposition 4.1). In this sense, we use not only the “partial hyperbolicity” of $\text{Mod}(S)$ but also certain features of $\text{Mod}(S)$ shared with Zariski dense subgroups of Lie groups.

1.8. On the proof. A key point of our argument is to show the relationship between Γ -invariant measures on the horospherical foliation and Γ -conformal measures on the horoboundary. The latter measures always give the former; our main contribution is proving that the former measures are always given by the latter, and that the former ones are ergodic. The proof proceeds in four steps; the two main contributions are Steps (1) and (4), while Steps (2) and (3) are based on previous results. We describe them for the action of $\Gamma < \text{Mod}(S)$ on \mathcal{ML} .

- (1) There is a natural one-parameter flow $\{T_a\}_{a \in \mathbb{R}}$ on \mathcal{ML} that T_a scales each measured lamination by e^a . Suppose now that there exists an ergodic Γ -invariant Radon measure μ on the space \mathcal{R}_Γ of Γ -recurrent measured laminations. We prove that μ is then *quasi-invariant* under the flow $\{T_a\}_{a \in \mathbb{R}}$, namely, $T_a^* \mu$ and μ are absolutely continuous to each other for any $a \in \mathbb{R}$. We prove the quasi-invariance in Section 7, and this is the main argument of this paper.
- (2) Once we have the quasi-invariance as in Step (1), it follows that μ is the product of a conformal measure ν of Γ on \mathcal{PML} and the Lebesgue measure on $(0, +\infty)$, under the identification $\mathcal{ML} = \mathcal{PML} \times (0, +\infty)$, as in Equation (1.1). This is based on the work [ANSS02] for skew-product dynamical systems, which was developed further in the negatively-curved setting in [Sar04]. For the Teichmüller space, this strategy was first implemented by Hamenstädt [Ham09] using train tracks.
- (3) After step (2), we deduce the essential uniqueness of μ from the essential uniqueness of the conformal measure ν . We also deduce that Γ is of divergence type. This is based on a recent version of Patterson–Sullivan theory due to Coulon [Cou24] and Yang [Yan24].
- (4) Conversely, we begin with Γ of divergence type and the measure μ of the form in Equation (1.1). Then we prove that μ is Γ -ergodic. As shown by Schmidt [Sch77], the two main ingredients for the ergodicity of μ are the ergodicity of ν and the fullness of the essential group $E_\nu(\Gamma)$ for Γ and ν (see Definition 8.3). The former ingredient is given by Coulon [Cou24] and Yang [Yan24]. Our contribution towards the ergodicity is about the latter ingredient, showing that the essential subgroup is full. To do this, we construct an inductive partition of a given compact subset of \mathcal{ML} satisfying certain measure conditions. This technical construction is the content of Lemma 8.5.

Our approach is (coarse) geometric, and this strategy is completely different from works of Lindenstrauss–Mirzakhani [LM08] and of Hamenstädt [Ham09] using dynamical properties of geodesic and unipotent flows. This also applies to $\text{CAT}(-1)$ spaces and general metric spaces with squeezing isometries, as discussed above. While special cases of $\text{CAT}(-1)$ spaces were studied from a more dynamical approach in many literature, for instance

[Rob03], our strategy in this paper provides a different argument which is applicable in general, not only for those special cases.

Let us describe some more details about Step (1). In Theorem 7.5, we first show that μ is in fact supported on a smaller subspace \mathcal{S}_Γ of \mathcal{R}_Γ which fibers over the squeezed limit set we introduce in Definition 7.6. Intuitively, along the Teichmüller geodesics towards measured laminations in \mathcal{S}_Γ , geodesics are more and more “squeezed”. This is a genuinely new step required for Teichmüller space. Indeed, this step does not appear in previous work on CAT(−1) or homogeneous settings using dynamics of flows.

We then prove the quasi-invariance of μ under T_a for various $a \in \mathbb{R}$. For this, we use the squeezing property of pseudo-Anosov mapping classes and a fine control of translations along pseudo-Anosov axes. In addition, we need to construct a nice covering of \mathcal{S}_Γ into “almost disjoint” basic open sets. This construction another of our main contributions, and is outlined in Theorem 7.10. This covering is also crucially used in Step (4), when we show that $E_\nu(\Gamma) = \mathbb{R}$.

In contrast to previous literature which heavily use dynamics of continuous flows, we do not make use of dynamical properties (ergodic theorems, mixing, equidistribution, etc.) of the geodesic/unipotent flows on the Teichmüller space, and the theory of train tracks and the curve complex. Instead, we employ a geometric approach based on the contracting property of axes of pseudo-Anosov mapping classes due to Minsky [Min96], and our observation that the contracting property can be enhanced to the *squeezing* property (Proposition 4.1). Because of this, we can deal with *general non-elementary subgroups* despite the lack of homogeneity or negative curvature of the Teichmüller space.

Finally, we emphasize that the current techniques can be extended further to yield horospherical measure classification results for certain infinite-covolume higher-rank discrete subgroups. See [CK26a] for details.

1.9. Non-geodesic spaces. There is an important class of metric spaces that we will not discuss in detail. Let Γ be a non-elementary relatively hyperbolic group. Let m be a finitely supported, admissible, symmetric probability measure on Γ . There is a left-invariant metric d_m on Γ associated with m , called the *Green metric*. This metric is quasi-isometric to the word metric and is Gromov hyperbolic, but is not geodesic in general. Nonetheless, it is *roughly geodesic*. In a sense, every loxodromic element of Γ is a *squeezing* isometry with respect to d_m , even if it does not possess an axis. Hence, under the non-arithmeticity assumption, we expect that there exists a unique nonzero, Γ -invariant ergodic Radon measure on the d_m -horospherical foliation. This unique measure is in the class of (*m-stationary measure*) \times $\text{Leb}_{\mathbb{R}}$.

In order to apply our theory to Green metrics, one needs to replace geodesics with rough geodesics. We leave this for future work.

1.10. Organization. In Section 2, we present a brief overview of the Teichmüller space, especially about its boundary. We define the Hubbard–Masur coordinates for the space of measured laminations in Section 3. In Section 4, we discuss some aspects of pseudo-Anosov mapping classes, including contracting and squeezing properties of their axes. We discuss the geometry of a general metric space with contracting and squeezing isometries in Section 5. Section 6 is devoted to the Patterson–Sullivan theory with squeezing isometries. In Section 7, we prove the unique ergodicity (Theorem 1.11). The ergodicity (Theorem 1.9) is proved in Section 8. In Section 9, we deduce our measure classifications on the space of measured laminations (Theorem 1.2, Theorem 1.3, and Theorem 1.6). Our orbit closure classification is presented in Section 10.

Acknowledgements. The authors would like to thank Yair Minsky and Hee Oh for helpful conversations and for many useful comments on the earlier version of this paper. Kim extends his special gratitude to his Ph.D. advisor Hee Oh for her encouragement and guidance. The authors also thank referees for their careful reading and helpful comments.

This work was initiated when Choi was working at Cornell University. Kim thanks Cornell University for the hospitality during the visit in April 2025, where we had many interesting discussions.

Choi was supported by the Mid-Career Researcher Program (RS-2023-00278510) through the National Research Foundation funded by the government of Korea, and by the KIAS individual grant (MG091901) at KIAS.

2. TEICHMÜLLER THEORY

In this section, we review basic Teichmüller theory. Our explanation is minimal and we refer interested readers to [Mas09], [FM12] and [GM23].

In the rest of this paper, let S be a connected orientable surface of genus g and with p punctures with $3g - 3 + p \geq 1$. Recall from the introduction that the Teichmüller space $\mathcal{T} = \mathcal{T}(S)$ is the space of all marked Riemann surface structures on S . More precisely,

$$\mathcal{T} := \left\{ (X, f) : \begin{array}{l} X \text{ is a Riemann surface and} \\ f : S \rightarrow X \text{ is a diffeomorphism (marking)} \end{array} \right\} / \sim$$

where $(X, f) \sim (Y, h)$ if $h \circ f^{-1} : X \rightarrow Y$ is isotopic to a bi-holomorphic diffeomorphism. We equip \mathcal{T} with the *Teichmüller metric* $d_{\mathcal{T}}$, defined as

$$d_{\mathcal{T}}((X, f), (Y, h)) := \frac{1}{2} \log \inf \left\{ K(\phi) : \begin{array}{l} \text{quasiconformal } \phi : X \rightarrow Y \\ \text{isotopic to } h \circ f^{-1} \end{array} \right\}$$

where $K(\phi) \geq 1$ denotes the quasiconformal dilatation of ϕ . The metric $d_{\mathcal{T}}$ is Finsler, proper, uniquely geodesic but not Riemannian. The Teichmüller space \mathcal{T} is homeomorphic to $\mathbb{R}^{6g-6+2p}$.

The mapping class group $\text{Mod}(S)$ of S is the group of isotopy classes of orientation-preserving diffeomorphisms of S . It acts on $(\mathcal{T}, d_{\mathcal{T}})$ by

$$g \cdot (X, f) := (X, f \circ g^{-1}) \quad \text{for } g \in \text{Mod}(S) \text{ and } (X, f) \in \mathcal{T}.$$

We note that $\text{Mod}(S)$ is more or less the full isometry group of $(\mathcal{T}, d_{\mathcal{T}})$, as shown by Royden [Roy71, Theorem 2] and by Earle and Kra ([EK74a], [EK74b]). See also Ivanov's work [Iva01]. The quotient

$$\mathcal{M} = \mathcal{M}(S) := \text{Mod}(S) \backslash \mathcal{T}$$

is the moduli space of Riemann surface structures on S .

Note that in the exceptional case when $3g - 3 + p = 1$ (i.e., S is once-punctured torus or 4-punctured sphere), $\mathcal{T} = \mathbb{H}^2$. Hence, the major case of our interest is when $3g - 3 + p \geq 2$.

2.1. Thurston boundary. Recall the space $\mathcal{ML} = \mathcal{ML}(S)$ of measured laminations on S , which is homeomorphic to $\mathbb{R}^{6g-6+2p} \setminus \{0\}$. We denote by $\mathcal{PML} = \mathcal{PML}(S)$ the space of projective measured laminations on S , where the projectivization is given by the scaling of transverse measures. The space \mathcal{PML} can also be identified with the unit sphere in $\mathcal{ML} \simeq \mathbb{R}^{6g-7+2p} \setminus \{0\}$, and hence $\mathcal{PML} \simeq \mathbb{S}^{6g-7+2p}$. Thurston compactified the Teichmüller space using \mathcal{PML} and showed that the $\text{Mod}(S)$ -action on \mathcal{T} continuously extends to the compactification $\mathcal{T} \cup \mathcal{PML}$. In this regard, \mathcal{PML} is also referred to as the *Thurston boundary* of \mathcal{T} ([Thu88], [Thu97]).

There is another notion called *measured foliation* on surfaces. The space of measured foliations (up to equivalence) on S is denoted by $\mathcal{MF} = \mathcal{MF}(S)$, and we also denote its projectivization by $\mathcal{PMF} = \mathcal{PMF}(S)$. In fact, \mathcal{PML} and \mathcal{PMF} give rise to the same compactification of \mathcal{T} . By this we mean that not only are the two spaces homeomorphic via a map $\mathcal{PML} \rightarrow \mathcal{PMF}$, but also that the convergence in $\mathcal{T} \cup \mathcal{PML}$ is equivalent to the convergence in $\mathcal{T} \cup \mathcal{PMF}$.

While we stick to measured laminations throughout, they are interchangeable with measured foliations depending on readers' preference.

2.2. Gardiner–Masur boundary. Gardiner and Masur proposed another compactification of the Teichmüller space using the so-called *Gardiner–Masur boundary* $\partial^{GM}\mathcal{T}$ in [GM91]. This compactification $\mathcal{T} \cup \partial^{GM}\mathcal{T}$ is now called the Gardiner–Masur compactification. The $\text{Mod}(S)$ -action on \mathcal{T} continuously extends to $\mathcal{T} \cup \partial^{GM}\mathcal{T}$ as well.

Both the Thurston compactification and the Gardiner–Masur compactification are obtained by embedding \mathcal{T} into the space $\mathbb{R}_{\geq 0}^{\mathcal{S}}$ of functions on the set \mathcal{S} of isotopy classes of essential simple closed curves on S , and then taking the closure in the projective space $\mathbb{P}(\mathbb{R}_{\geq 0}^{\mathcal{S}})$. Recall that \mathcal{T} can also be viewed as the space of all marked hyperbolic structures on S , Thurston embedded \mathcal{T} using the hyperbolic length, and Gardiner–Masur embedded \mathcal{T} using the extremal length (see Equation (3.1)). In this regard, Gardiner

and Masur proved that the Thurston boundary \mathcal{PML} sits in the Gardiner–Masur boundary $\partial^{GM}\mathcal{T}$ as a proper subset [GM91, Theorem 7.1].

2.3. Uniquely ergodic laminations and boundary comparison. A measured lamination is called *uniquely ergodic* if the underlying geodesic lamination admits a unique transverse measure up to scaling. We denote by $\mathcal{UE} = \mathcal{UE}(S) \subset \mathcal{PML}$ the subset of projective classes of uniquely ergodic measured laminations on S .

On the subset $\mathcal{UE} \subset \mathcal{PML}$, the accumulation of points in \mathcal{T} is well-behaved: if $[\xi] \in \mathcal{UE}$, then for each $x \in \mathcal{T}$, there exists a *unique* Teichmüller (geodesic) ray $\gamma_x : [0, +\infty) \rightarrow \mathcal{T}$ based at x such that $\lim_{t \rightarrow +\infty} \gamma_x(t) = [\xi]$ in the Thurston compactification ([HM79], [Mas80], [Mas82b]). Furthermore, for every $x, y \in \mathcal{T}$, two rays γ_x and γ_y are asymptotic, i.e., there exists $T \in \mathbb{R}$ such that $\lim_{t \rightarrow +\infty} d_{\mathcal{T}}(\gamma_x(t), \gamma_y(t+T)) = 0$ [Mas80].

Moreover, while the identity map $\mathcal{T} \rightarrow \mathcal{T}$ does not continuously extend to an embedding of the Thurston compactification into the Gardiner–Masur compactification, it extends to a homeomorphism

$$(2.1) \quad \begin{array}{ccc} \mathcal{T} \cup \mathcal{UE} & \longrightarrow & \mathcal{T} \cup \mathcal{UE} \\ \cap & & \cap \\ \mathcal{T} \cup \mathcal{PML} & & \mathcal{T} \cup \partial^{GM}\mathcal{T} \end{array}$$

as proved by Masur [Mas82b] and recovered by Miyachi [Miy13].

Thanks to these facts, we can regard \mathcal{UE} as a topological subspace of \mathcal{PML} and as a topological subspace of $\partial^{GM}\mathcal{T}$ at the same time. As $\partial^{GM}\mathcal{T}$ is identified with the horofunction boundary of $(\mathcal{T}, d_{\mathcal{T}})$, this enables us to employ the theory of horofunctions in studying Radon measures on \mathcal{ML} that are supported on uniquely ergodic ones.

A sufficient condition for a measured lamination to be uniquely ergodic is the recurrence of the associated Teichmüller geodesic ray to a compact subset in the moduli space $\mathcal{M} = \text{Mod}(S) \backslash \mathcal{T}$. Namely, the *Masur criterion* due to Masur [Mas92, Theorem 1.1] asserts that for a Teichmüller geodesic ray $\gamma : [0, +\infty) \rightarrow \mathcal{T}$, if there exist a compact subset $K \subset \mathcal{M}$ and a sequence $t_n \rightarrow +\infty$ such that $\gamma(t_n) \in \mathcal{T}$ projects into $K \subset \mathcal{M}$ for all $n \in \mathbb{N}$, then γ converges to a uniquely ergodic lamination in both the Thurston compactification and the Gardiner–Masur compactification.

2.4. Busemann cocycles. For $x, y \in \mathcal{T}$, the function $d_{\mathcal{T}}(x, \cdot) - d_{\mathcal{T}}(y, \cdot)$ on \mathcal{T} may not continuously extend to the Thurston boundary \mathcal{PML} . Nevertheless, Miyachi showed that if $\xi \in \mathcal{ML}$ is uniquely ergodic, then for every sequence $\{z_n\}_{n \in \mathbb{N}} \subset \mathcal{T}$ converging to $[\xi] \in \mathcal{UE}$ the limit

$$\beta_{\xi}(x, y) := \lim_{n \rightarrow +\infty} d_{\mathcal{T}}(x, z_n) - d_{\mathcal{T}}(y, z_n)$$

exists and is independent of the choice of $\{z_n\}_{n \in \mathbb{N}}$ [Miy13, Corollary 1]. The function β is called the *Busemann cocycle*. Indeed, it satisfies the cocycle

relation: for $w, x, y \in \mathcal{T}$,

$$\beta_\xi(w, y) = \beta_\xi(w, x) + \beta_\xi(x, y).$$

Moreover, for $g \in \text{Mod}(S)$, it is easy to see that

$$\beta_{g\xi}(gx, gy) = \beta_\xi(x, y).$$

Although β_ξ only depends on the projective class $[\xi]$, not ξ , we use the notation β_ξ for a later purpose.

3. HUBBARD–MASUR COORDINATES FOR MEASURED LAMINATIONS

In [HM79], Hubbard and Masur proved that given a point $x_0 \in \mathcal{T}$, the space $\mathcal{Q}(S, x_0)$ of holomorphic quadratic differentials on Riemann surface (S, x_0) is homeomorphic to \mathcal{ML} , where the homeomorphism is given by the vertical measured foliation of a given holomorphic quadratic differential on x_0 .

This enables us to consider certain coordinate systems on \mathcal{ML} , which we call Hubbard–Masur coordinates, by specifying a homeomorphism

$$\mathcal{ML} \simeq \mathcal{PML} \times \mathbb{R}.$$

For this, we employ the notion of extremal lengths.

3.1. Extremal lengths. Given a point $x \in \mathcal{T}$ and the isotopy class α of a simple closed curve on S , the *extremal length* of α on Riemann surface (S, x) is defined as

$$(3.1) \quad \text{Ext}_x(\alpha) := \sup_{\sigma} \frac{\ell_{\alpha}(\sigma)^2}{\text{Area}(\sigma)}$$

where the supremum is over all metrics σ conformally equivalent to x , and $\ell_{\alpha}(\sigma)$ is the length of α in the metric σ . The extremal length continuously extends to the function

$$\text{Ext}_x : \mathcal{ML} \rightarrow \mathbb{R}$$

such that $\text{Ext}_x(t\xi) = t^2\xi$ for all $\xi \in \mathcal{ML}$ and $t > 0$, by Kerckhoff [Ker80, Proposition 3].

Miyachi [Miy13, Corollary 2] and Walsh [Wal19, Section 6] showed that for $[\xi] \in \mathcal{UE}$ and $x, y \in \mathcal{T}$, the following holds:

$$(3.2) \quad \beta_\xi(x, y) = \frac{1}{2} \log \frac{\text{Ext}_x(\xi)}{\text{Ext}_y(\xi)}.$$

3.2. Hubbard–Masur coordinates. Fixing a basepoint $x_0 \in \mathcal{T}$, we now define the *Hubbard–Masur coordinates* for \mathcal{ML} (with respect to x_0) as follows:

$$\begin{aligned} \text{HM} : \mathcal{ML} &\rightarrow \mathcal{PML} \times \mathbb{R} \\ \xi &\mapsto \left([\xi], \frac{1}{2} \log \text{Ext}_{x_0}(\xi) \right) \end{aligned}$$

which is a homeomorphism. We define the $\text{Mod}(S)$ -action on $\mathcal{PML} \times \mathbb{R}$ by

$$g \cdot ([\xi], t) := \left(g[\xi], t + \frac{1}{2} \log \frac{\text{Ext}_{g^{-1}x_0}(\xi)}{\text{Ext}_{x_0}(\xi)} \right)$$

for $g \in \text{Mod}(S)$, $\xi \in \mathcal{ML}$, and $t \in \mathbb{R}$. Note that this is well-defined independent of the choice of $\xi \in \mathcal{ML}$.

By Equation (3.2), this can be rephrased in terms of the Busemann function. For a uniquely ergodic lamination ξ and a mapping class g ,

$$g \cdot ([\xi], t) = (g[\xi], t + \beta_\xi(g^{-1}x_0, x_0)).$$

We now show the equivariance of the action.

Proposition 3.1. *The map $\text{HM} : \mathcal{ML} \rightarrow \mathcal{PML} \times \mathbb{R}$ is $\text{Mod}(S)$ -equivariant.*

Proof. Let $g \in \text{Mod}(S)$ and $\xi \in \mathcal{ML}$. It follows from the definition that

$$\text{HM}(g\xi) = \left(g[\xi], \frac{1}{2} \log \text{Ext}_{x_0}(g \cdot \xi) \right).$$

Since $\text{Ext}_{x_0}(g\xi) = \text{Ext}_{g^{-1}x_0}(\xi)$, we have

$$\text{HM}(g\xi) = \left(g[\xi], \frac{1}{2} \log \text{Ext}_{x_0}(\xi) + \frac{1}{2} \log \frac{\text{Ext}_{g^{-1}x_0}(\xi)}{\text{Ext}_{x_0}(\xi)} \right). \quad \square$$

3.3. Liu–Su and Walsh’s coordinates on the horofunction boundary. Liu and Su proved in [LS14] and Walsh proved in [Wal19] that the horofunction boundary for $(\mathcal{T}, d_{\mathcal{T}})$ is equal to the Gardiner–Masur boundary. In both works, fixing a basepoint $x_0 \in \mathcal{T}$, the authors constructed a continuous injection

$$\mathcal{T} \cup \partial^{GM} \mathcal{T} \rightarrow \{1\text{-Lipschitz functions on } \mathcal{T} \text{ vanishing at } x_0\},$$

and its restriction to the Gardiner–Masur boundary

$$\partial^{GM} \mathcal{T} \rightarrow \{\text{horofunctions on } \mathcal{T} \text{ vanishing at } x_0\}$$

is a homeomorphism. See Section 5.6 for more discussion on horofunctions.

4. SQUEEZING PROPERTY OF PSEUDO-ANOSOV AXES

We now discuss elements of $\text{Mod}(S)$, the mapping classes of S . The celebrated Nielsen–Thurston classification ([Thu88], [FLP79]) asserts that a mapping class $\varphi \in \text{Mod}(S)$ is either

- periodic, i.e., $\varphi^n = \text{id}$ for some $n \in \mathbb{N}$,
- reducible, i.e., there exists a multicurve on S invariant under φ , or
- pseudo-Anosov, i.e., there exists a pair of transverse measured laminations $\xi^+, \xi^- \in \mathcal{ML}$ and $\lambda > 1$ such that

$$(4.1) \quad \varphi(\xi^+) = \lambda \cdot \xi^+ \quad \text{and} \quad \varphi(\xi^-) = \frac{1}{\lambda} \cdot \xi^-.$$

The measured laminations ξ^+ and ξ^- are called unstable and stable measured laminations respectively, and the constant $\lambda > 1$ is called the stretch factor of φ .

Among the three categories we are particularly interested in pseudo-Anosov mapping classes. Let $\varphi \in \text{Mod}(S)$ be a pseudo-Anosov mapping class. We summarize some standard facts:

- (1) It follows from Equation (4.1) that the unstable and stable measured laminations of φ give two fixed points $[\xi^+], [\xi^-] \in \mathcal{PML}$ in the Thurston boundary. Moreover, on the Thurston compactification $\mathcal{T} \cup \mathcal{PML}$, φ exhibits the north-south dynamics.
More precisely, for each compact subset $K \subset (\mathcal{T} \cup \mathcal{PML}) \setminus \{[\xi^-]\}$, we have $\varphi^n K \rightarrow [\xi^+]$ as $n \rightarrow +\infty$. Similarly, for each compact subset $K \subset (\mathcal{T} \cup \mathcal{PML}) \setminus \{[\xi^+]\}$, we have $\varphi^n K \rightarrow [\xi^-]$ as $n \rightarrow -\infty$.
- (2) The projective measured laminations $[\xi^+], [\xi^-] \in \mathcal{PML}$ are called attracting and repelling fixed points of φ respectively, and they are in fact uniquely ergodic, i.e., $[\xi^+], [\xi^-] \in \mathcal{UE}$.
- (3) There exists a unique bi-infinite Teichmüller geodesic $\gamma \subset \mathcal{T}$ whose endpoints are $[\xi^\pm] \in \mathcal{PML}$ in the Thurston compactification. Moreover, γ is invariant under φ , and the action of φ on γ is the translation by $\log \lambda$, where λ is the stretch factor of φ .

The invariant geodesic γ is called the *axis* of pseudo-Anosov φ .

The first two items are part of Thurston's proof of the Nielsen–Thurston classification using the Thurston compactification. We refer the readers to Thurston's exposition [Thu88] and textbooks ([FLP79], [FM12]). The last item is proved in [FLP79], [GM91, Theorem 3.1], and [MS93, Theorem 9.2].

4.1. Contracting property and squeezing property. The two central dynamical notions in this paper are contracting and squeezing properties of isometries. In [Min96], Minsky proved that Teichmüller geodesics that are *precompact* in the moduli space $\mathcal{M} = \text{Mod}(S) \setminus \mathcal{T}$ are contracting. More precisely, for each compact subset $K \subset \mathcal{M}$, there exists $D = D(K) > 0$ such that every geodesic in \mathcal{T} that projects into $K \subset \mathcal{M}$ is D -contracting.

Recall that a pseudo-Anosov mapping class has an invariant Teichmüller geodesic, called its *axis*, which descends to a closed loop in \mathcal{M} . Therefore, axes of pseudo-Anosov mapping classes are contracting. They in fact enjoy a stronger property, called the *squeezing* property, thanks to their periodicity. This essentially follows from Minsky's contraction theorem in [Min96] and Masur's stability theorem in [Mas80]. We give a proof for completeness.

Proposition 4.1. *The axis of a pseudo-Anosov mapping class is squeezing.*

Proof. Let $\varphi \in \text{Mod}(S)$ be pseudo-Anosov and denote by $\gamma \subset \mathcal{T}$ its axis. We fix a unit-speed parametrization $\gamma : \mathbb{R} \rightarrow \mathcal{T}$. Suppose to the contrary that γ is not squeezing. Then there exists $\epsilon > 0$ such that for each $n \in \mathbb{N}$, there exist sequences $\{x_n\}_{n \in \mathbb{N}}, \{y_n\}_{n \in \mathbb{N}} \subset \mathcal{T}$ and $\{t_n\}_{n \in \mathbb{N}} \subset \mathbb{R}$ such that $\gamma(t_n - a_n) \in \pi_\gamma(x_n)$ and $\gamma(t_n + b_n) \in \pi_\gamma(y_n)$ for some $a_n, b_n > n$ while $d_{\mathcal{T}}(\gamma(t_n), [x_n, y_n]) \geq \epsilon$. Since φ acts on γ by a translation, we may assume that t_n is bounded.

By [Min96, Contraction Theorem], γ is contracting. Hence by applying [CCT25, Lemma 2.2] (see Lemma 5.2), there exists $C > 0$ such that for each $n \in \mathbb{N}$, there exist $w_n, z_n \in [x_n, y_n]$ satisfying

- $d_{\mathcal{T}}(w_n, \gamma(t_n - a_n)) \leq C$,
- $d_{\mathcal{T}}(z_n, \gamma(t_n + b_n)) \leq C$, and
- $[w_n, z_n]$ is contained in the C -neighborhood of γ .

Since $a_n, b_n \rightarrow +\infty$ and t_n is bounded, after passing to a subsequence, $[w_n, z_n]$ converges to a bi-infinite geodesic contained in the $2C$ -neighborhood of γ . Since both endpoints of γ are contained in \mathcal{UE} , it follows from [KM96, Lemma 1.4.2] that the limit of $[w_n, z_n]$ is the bi-infinite geodesic between the endpoints of γ , which must be γ .

On the other hand, t_n is bounded and $d_{\mathcal{T}}(\gamma(t_n), [w_n, z_n]) \geq \epsilon$ for all $n \in \mathbb{N}$, which is a contradiction. This finishes the proof. \square

The squeezing property can be considered as a version of $\text{CAT}(-1)$ property along special directions. It is sensible to generalize some dynamical phenomena in $\text{CAT}(-1)$ spaces to metric spaces with squeezing isometries. For example, in [Cho24] the first author studied continuity and differentiability of the drift of a random walk on the Teichmüller metric using the squeezing property of pseudo-Anosov mapping classes.

5. CONTRACTING AND SQUEEZING ISOMETRIES

The previous sections tell us that Teichmüller space is a metric space with squeezing isometries. In this section, we further develop this perspective.

Throughout this section, let (X, d) be a proper geodesic metric space and fix a basepoint $x_0 \in X$. For $x, y \in X$, we denote by $[x, y] \subset X$ an arbitrarily chosen geodesic connecting x to y . For $w, z \in [x, y]$, we implicitly assume $[w, z]$ to be a segment of $[x, y]$. Every parametrization of a geodesic is of unit speed. We denote the isometry group of X by $\text{Isom}(X)$.

We say that two geodesics $\gamma_1, \gamma_2 \subset X$ are C -equivalent if their Hausdorff distance is at most C and if their beginning/ending points are pairwise C -close. When two reals $a, b \in \mathbb{R}$ differ by at most C , we write $a =_C b$.

5.1. Contracting subsets. For a closed subset $A \subset X$, we denote by $\pi_A(\cdot) : X \rightarrow 2^A$ the *nearest point projection*. That is, we define

$$\pi_A(x) := \left\{ a \in A : d(x, a) = \inf_{z \in A} d(x, z) \right\}.$$

Definition 5.1. Let $C \geq 0$. We say that a closed subset $A \subset X$ is C -contracting if for every geodesic $\gamma \subset X$ with $d(\gamma, A) \geq C$ we have $\text{Diam } \pi_A(\gamma) \leq C$. We say that A is (*strongly*) contracting if it is C -contracting for some $C \geq 0$.

By definition, if $A \subset X$ is C -contracting, then $\text{Diam } \pi_A(x) \leq 2C$ for all $x \in X$. It is also easy to see that if $A \subset X$ is C -contracting and

$x, y \in X$ are in the C -neighborhood of A , then $[x, y]$ is contained in the $2.5C$ -neighborhood of A .

As an example, every geodesic in a δ -hyperbolic space is $C(\delta)$ -contracting for some $C(\delta) \geq 0$ depending only on δ . In particular, geodesics in a simplicial tree or \mathbb{H}^2 are contracting with a uniform contracting constant. More generally, every (K, B) -quasigeodesic in a δ -hyperbolic space is $C(\delta, K, B)$ -contracting for a constant $C(\delta, K, B) \geq 0$.

The following is a reminiscent of the Morse lemma in a Gromov hyperbolic space. We use the version in [CCT25] due to its conciseness, but we note that similar results were already observed in ([CDP90, Proposition 10.2.1], [Sis13, Lemma 2.4, 2.5], [ACT15, Proposition 2.9, Lemma 2.10, Lemma 2.11], [Yan14, Proposition 3.1]).

Lemma 5.2 ([CCT25, Lemma 2.2]). *Let $\gamma \subset X$ be a C -contracting geodesic and $x, y \in X$. Suppose that $\text{Diam } \pi_\gamma([x, y]) > C$. Then there exist points $p, q \in [x, y]$, with p closer to x than q , such that*

- $\pi_\gamma([x, y])$ and $[p, q]$ are $4C$ -equivalent,
- $\text{Diam}(\pi_\gamma([x, p]) \cup \{p\}) \leq 2C$,
- $\text{Diam}(\pi_\gamma([q, y]) \cup \{q\}) \leq 2C$, and,
- for all $x' \in \pi_\gamma(x)$ and $y' \in \pi_\gamma(y)$, $[x', y']$ and $[p, q]$ are $10C$ -equivalent.

The following is an immediate corollary of Lemma 5.2.

Corollary 5.3. *For a C -contracting geodesic $\gamma \subset X$, the following holds.*

- (1) *The map $\pi_\gamma(\cdot)$ is $(1, 4C)$ -Lipschitz: for each $x, y \in X$,*

$$\text{Diam } \pi_\gamma(\{x, y\}) \leq d(x, y) + 4C.$$

- (2) *Let $x \in X$ and $\gamma(t) \in \pi_\gamma(x)$. Then for every $s \in \mathbb{R}$, we have*

$$d(x, \gamma(s)) =_{4C} d(x, \gamma(t)) + |t - s|.$$

5.2. Contracting isometries.

Definition 5.4. We say that an isometry $g \in \text{Isom}(X)$ is *axial* if there exists a bi-infinite geodesic $\gamma : \mathbb{R} \rightarrow X$ invariant under g such that

$$g \cdot \gamma(t) = \gamma(t + \tau_g) \quad \text{for all } t \in \mathbb{R}$$

for some $\tau_g > 0$. We call γ an *axis* of g and τ_g the *translation length* of g .

An axial isometry $g \in \text{Isom}(X)$ is called *C -contracting* for $C \geq 0$ if it has a C -contracting axis.

Given an axial isometry $g \in \text{Isom}(X)$, note that

$$\tau_g = \lim_{n \rightarrow +\infty} \frac{d(x, g^n x)}{n} > 0 \quad \text{for each } x \in X.$$

Then we can observe the following:

$$\tau_g = \inf_{x \in X} d(x, gx) \quad \text{and} \quad \tau_{g^k} = |k| \tau_g \quad \text{for each } k \in \mathbb{Z}.$$

For each $h \in \text{Isom}(X)$, hgh^{-1} is also axial and $\tau_{hgh^{-1}} = \tau_g$.

5.3. Squeezing isometries.

Definition 5.5. We say that a bi-infinite geodesic $\gamma : \mathbb{R} \rightarrow X$ is *squeezing* if for each $\epsilon > 0$ there exists $L = L(\epsilon) > 0$ such that for each $x, y \in X$ and $t \in \mathbb{R}$ with $\gamma(t - a) \in \pi_\gamma(x)$ and $\gamma(t + b) \in \pi_\gamma(y)$ for some $a, b \geq L$, we have

$$d([x, y], \gamma(t)) \leq \epsilon.$$

We call an axial isometry $g \in \text{Isom}(X)$ *squeezing* if it has a squeezing axis.

By definition, squeezing isometries are contracting. Note that both squeezing and contracting properties are invariant under conjugations. If an isometry $g \in \text{Isom}(X)$ is squeezing, then it has a unique axis (up to reparametrization). We denote it by A_g . For $h \in \text{Isom}(X)$, $A_{hgh^{-1}} = hA_g$.

As we will see later, squeezing geodesics are well-suited for studying horofunctions due to the following lemma.

Lemma 5.6. *Let $\gamma : \mathbb{R} \rightarrow X$ be a squeezing geodesic. Fix $\epsilon > 0$ and let $L = L(\epsilon) > 0$ be as in Definition 5.5. Let $x_1, x_2, y_1, y_2 \in X$ and suppose that for some $t \in \mathbb{R}$, we have*

$$\pi_\gamma(x_i) \cap \gamma((-\infty, t - L]) \neq \emptyset \quad \text{and} \quad \pi_\gamma(y_i) \cap \gamma([t + L, +\infty)) \neq \emptyset \quad \text{for } i = 1, 2.$$

Then we have

$$d(x_1, y_1) - d(x_1, y_2) =_{8\epsilon} d(x_2, y_1) - d(x_2, y_2).$$

Proof. Let $i \in \{1, 2\}$. By the squeezing property, there exist $p \in [x_i, y_1]$ and $q \in [x_i, y_2]$ that are ϵ -close to $\gamma(t)$. By the triangle inequality, we have

$$d(x_i, y_1) - d(x_i, y_2) =_{4\epsilon} d(\gamma(0), y_1) - d(\gamma(0), y_2).$$

This gives the desired estimate. \square

5.4. Alignment. We denote the closed K -neighborhoods by $\mathcal{N}_K(\cdot)$.

Definition 5.7 (Alignment). Let $w, x, y, z \in X$. For a geodesic $[x, y] \subset X$ and $K \geq 0$, we say that the sequence $(w, [x, y])$ is *K -aligned* if

$$\pi_{[x, y]}(w) \subset \mathcal{N}_K(x).$$

Similarly, we call that the sequence $([x, y], z)$ is *K -aligned* if $(z, [y, x])$ is K -aligned.

Finally, we say that the sequence $(w, [x, y], z)$ is *K -aligned* if both sequences $(w, [x, y])$ and $([x, y], z)$ are K -aligned. See Figure 2.

The following is immediate.

Lemma 5.8. *Let $\gamma \subset X$ be a geodesic of length $L \geq 0$, let $0 \leq D \leq L$ and let $x \in X$. Then (γ, x) is not D -aligned or (x, γ) is not $(L - D)$ -aligned.*

If two closed sets are within finite Hausdorff distance, the contracting property of one set implies that of the other ([ACT15, Lemma 2.8], [Yan19, Proposition 2.4.(2)]). Furthermore, every subsegment of a contracting geodesic is contracting with a uniform contracting constant ([BF09, Lemma 3.2],

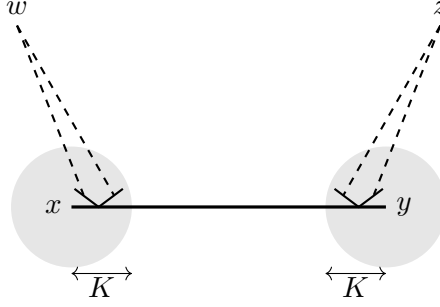


FIGURE 2. Alignment of geodesics and points.

[Yan20, Proposition 2.2.(3)]. These facts have the following consequence, whose proof is included for completeness.

Lemma 5.9. *Let $g \in \text{Isom}(X)$ be a contracting isometry with an axis $\gamma : \mathbb{R} \rightarrow X$ and let $x_0 \in X$. Then there exists $C = C(g, \gamma, x_0) > 0$ such that the following holds.*

- (0) γ is C -contracting.
- (1) $[x_0, g^k x_0]$ is C -contracting for all $k \in \mathbb{Z}$.
- (2) $d(g^k x_0, \gamma(\tau_g k)) < C$ for all $k \in \mathbb{Z}$.
- (3) Let $k \in \mathbb{N}$, let $x \in X$, and let $K \geq C$. Then

$$(x, [x_0, g^k x_0]) \text{ is not } K\text{-aligned} \implies \pi_\gamma(x) \subset \gamma([K - C, +\infty)).$$
- (4) Let $k \in \mathbb{N}$, let $x \in X$, and let $0 \leq K \leq \tau_g k - C$. Then

$$(x, [x_0, g^k x_0]) \text{ is } K\text{-aligned} \implies \pi_\gamma(x) \subset \gamma((-\infty, K + C]).$$

Moreover, C can be chosen so that $C(g, \gamma, x_0) = C(g^k, \gamma, x_0)$ for all $k \in \mathbb{N}$ and $C(g^{-1}, \hat{\gamma}, x_0) = C(g, \gamma, x_0)$ where $\hat{\gamma}$ is the inversion of γ .

We often write $C(g) = C(g, \gamma, x_0)$ by implicitly choosing its axis γ .

Proof. By definition, there exists $C_0 > 0$ so that γ is C_0 -contracting. Item (0) holds for all $C \geq C_0$. Item (2) is also immediate for any $C > d(x_0, \gamma(0))$.

Let

$$D = 10(C_0 + d(x_0, \gamma(0))).$$

We will see that $C = 100D$ plays the desired role.

We first show Item (1). By Lemma 5.2, $[x_0, g^k x_0]$ and $\gamma([0, \tau_g k])$ are D -equivalent for each $k \in \mathbb{Z}$. It suffices to consider $k \in \mathbb{N}$ with $\tau_g k > 98D$. Fix such $k \in \mathbb{N}$ and observe from Corollary 5.3(2) that for $x \in X$,

- if $\pi_\gamma(x) \cap \gamma((-\infty, 0)) \neq \emptyset$, then $\pi_{[x_0, g^k x_0]}(x) \subset \mathcal{N}_{5D}(\gamma(0))$.
- if $\pi_\gamma(x) \cap \gamma((\tau_g k, +\infty)) \neq \emptyset$, then $\pi_{[x_0, g^k x_0]}(x) \subset \mathcal{N}_{5D}(\gamma(\tau_g k))$.
- if $\pi_\gamma(x) \cap \gamma([0, \tau_g k]) \neq \emptyset$, then $\pi_{[x_0, g^k x_0]}(x) \subset \mathcal{N}_{5D}(\pi_\gamma(x))$.

Let $\eta \subset X$ be a geodesic such that $d(\eta, [x_0, g^k x_0]) \geq 100D$. We have two cases. First, if $\text{Diam } \pi_\gamma(\eta) \geq D$, then there exists a subsegment of η that is $4C$ -equivalent to $\pi_\gamma(\eta)$. In this case, $\pi_\gamma(\eta)$ cannot intersect $\gamma([0, \tau_g k])$; otherwise we have $d(\eta, \gamma([0, \tau_g k])) \leq 4C$ and $d(\eta, [x_0, g^k x_0]) \leq 2D$, a contradiction. Hence, either $\pi_\gamma(\eta) \subset \gamma((-\infty, 0))$ or $\pi_\gamma(\eta) \subset \gamma((\tau_g k, +\infty))$ holds. By the above observation, we have $\text{Diam } \pi_{[x_0, g^k x_0]}(\eta) \leq 100D$.

If $\text{Diam } \pi_\gamma(\eta) < D$, then we again have $\text{Diam } \pi_{[x_0, g^k x_0]}(\eta) \leq 100D$ by the above observation. Therefore, Item (1) holds for $C = 100D$.

We now show Item (3). Let $k \in \mathbb{N}$, let $K \geq 100D$ and suppose that $(x, [x_0, g^k x_0])$ is not K -aligned. Recall that $[x_0, g^k x_0]$ and $\gamma([0, \tau_g k])$ are D -equivalent. Hence there exist $p \in \pi_{[x_0, g^k x_0]}(x)$ and $t_p \in [0, \tau_g k]$ such that

$$d(x_0, p) > K \quad \text{and} \quad d(p, \gamma(t_p)) \leq D.$$

Note also that $d(x_0, \gamma(0)) \leq D$. We then have

$$t_p \geq K - 2D.$$

If there exists $t \in (-\infty, K - 6D]$ such that $\gamma(t) \in \pi_\gamma(x)$, then

$$\begin{aligned} d(x, \gamma(t_p)) &\geq d(x, \gamma(K - 6D)) + t_p - (K - 6D) - D \\ &\geq d(x, \gamma(K - 6D)) + 3D \end{aligned}$$

by Corollary 5.3(2). Since $0 \leq K - 6D \leq t_p \leq \tau_g k$, and since $[x_0, g^k x_0]$ and $\gamma([0, \tau_g k])$ are D -equivalent, we have

$$d(x, p) \geq d(x, \gamma(t_p)) - D \geq d(x, \gamma(K - 6D)) + 2D \geq d(x, [x_0, g^k x_0]) + D,$$

which contradicts the fact that $p \in \pi_{[x_0, g^k x_0]}(x)$. Therefore,

$$\pi_\gamma(x) \subset \gamma((K - 6D, +\infty))$$

and hence Item (3) holds for $C = 100D$.

For Item (4), let $k \in \mathbb{N}$ and $0 \leq K \leq \tau_g k - 100D$, and suppose that $(x, [x_0, g^k x_0])$ is K -aligned. Then $([x_0, g^k x_0], x)$ is not $(d(x_0, g^k x_0) - K)$ -aligned by Lemma 5.8. Note that

$$d(x_0, g^k x_0) - K \geq \tau_g k - K \geq 100D.$$

Hence, we can apply (a symmetric version of) Item (3) and deduce that

$$\pi_\gamma(x) \subset \gamma((-\infty, \tau_g k - (d(x_0, g^k x_0) - K) + 6D)) \subset \gamma((-\infty, K + 6D)).$$

Therefore, Item (4) holds for $C = 100D$ as well.

The ‘‘Moreover’’ part is straightforward. \square

5.5. Non-elementary subgroups of isometries. The class of subgroup we mainly consider is the following:

Definition 5.10. A subgroup $\Gamma < \text{Isom}(X)$ is called *non-elementary* if

- Γ is not virtually cyclic,
- the Γ -action on X is proper, and
- Γ contains a contracting isometry.

We say that two contracting isometries $g, h \in \text{Isom}(X)$ are *independent* if their orbits $\{g^i x_0\}_{i \in \mathbb{Z}}$ and $\{h^i x_0\}_{i \in \mathbb{Z}}$ have infinite Hausdorff distance. This is equivalent to saying that $\{g^i x_0\}_{i \in \mathbb{Z}}$ and $\{h^i x_0\}_{i \in \mathbb{Z}}$ have bounded nearest-point projections onto each other.

These two notions are related by the following well known fact: see [BF09, Proposition 6.5], [Sis18, Corollary 4.4], [ACT15, Lemma 2.23] and [Yan19, Lemma 2.11, Lemma 2.12]

Lemma 5.11. *Let $\Gamma < \text{Isom}(X)$ be a non-elementary subgroup. For a contracting isometry $g \in \Gamma$, there exists $h \in \Gamma$ such that hgh^{-1} and g are independent. Moreover, there are infinitely many pairwise independent contracting isometries in Γ .*

The following is a variant of the so-called *extension lemma* of Yang. We include the proof of this variant for the sake of completeness.

Lemma 5.12 (Extension lemma [Yan19, Lemma 1.13]). *Let $\Gamma < \text{Isom}(X)$ be a non-elementary subgroup. Then for each contracting isometry $\varphi \in \Gamma$, there exist $a_1, a_2, a_3 \in \Gamma$ and $\kappa = \kappa(\varphi) > 0$ such that*

- $[x_0, \varphi^n x_0]$ is κ -contracting for all $n \in \mathbb{N}$, and
- for each $x, y \in X$, there exists $a \in \{a_1, a_2, a_3\}$ that makes

$$(x, a \cdot [x_0, \varphi^n x_0], a\varphi^n a \cdot y) \quad \kappa\text{-aligned for all } n \in \mathbb{N}.$$

Moreover, κ can be chosen so that $\kappa(\varphi^k) = \kappa(\varphi)$ for all $k \in \mathbb{Z}$.

Proof. Note that the ‘‘Moreover’’ part is straightforward. Hence we prove the first claim. Let $\gamma : \mathbb{R} \rightarrow X$ be an axis of φ , which is contracting. By [Sis18, Corollary 4.4] and [Yan19, Lemma 2.11], the set

$$E(\varphi) := \{h \in \Gamma : \{\varphi^i x_0\}_{i \in \mathbb{Z}} \text{ and } h\{\varphi^i x_0\}_{i \in \mathbb{Z}} \text{ have finite Hausdorff distance}\}$$

is a finite extension of $\langle \varphi \rangle$. Furthermore, $\pi_\gamma(h\gamma)$ has finite diameter for every $h \notin E(\varphi)$. Since Γ is non-elementary, it is not the union of finitely many virtually cyclic subgroups. Hence, there exist $h, h' \in \Gamma$ such that $\pi_{u\gamma}(v\gamma)$ has finite diameter for every pair of elements $u, v \in \{\text{id}, h, h'\}$.

Let $C = C(\varphi, \gamma, x_0)$ be as in Lemma 5.9. We choose $\kappa \geq 100C$ such that

- $\text{Diam}\{x_0, hx_0, h'x_0\} < 0.01\kappa$, and
- $\pi_{u\gamma}(v\gamma) \subset u\gamma([-0.01\kappa, 0.01\kappa])$ for distinct $u, v \in \{\text{id}, h, h'\}$.

Now let $x \in X$. Suppose $(x, [x_0, \varphi^m x_0])$ is not κ -aligned for some $m \in \mathbb{N}$.

Claim. *Then $(x, h[x_0, \varphi^n x_0])$ is κ -aligned for all $n \in \mathbb{N}$.*

To show this, suppose to the contrary that $(x, h[x_0, \varphi^n x_0])$ is also not κ -aligned for some $n \in \mathbb{N}$. Then $\pi_{h[x_0, \varphi^n x_0]}(x)$ is at least 0.9κ -far from hx_0 , whereas $\pi_{h[x_0, \varphi^n x_0]}(x_0)$ is $2d(x_0, hx_0)$ -close to hx_0 , i.e., it is 0.02κ -close to hx_0 . Lemma 5.2 tells us that $[x_0, x]$ has a subsegment $[p, q]$ that is contained in the 0.04κ -neighborhood of $h[x_0, \varphi^n x_0]$, and such that $d(p, q) \geq 0.8\kappa$ and $d(x_0, p) \leq d(x_0, hx_0) + 0.02\kappa \leq 0.05\kappa$. Similarly, $[x_0, x]$ has a subsegment $[p', q']$ that is contained in the 0.04κ -neighborhood of $[x_0, \varphi^n x_0]$, and such that $d(x_0, q') \geq 0.8\kappa$ and $d(x_0, p') \leq 0.05\kappa$.

Then two subsegments $[p, q]$ and $[p', q']$ of $[x_0, x]$ have an overlap of length at least 0.7κ . Hence, there exist points $P \in [x_0, \varphi^n x_0]$ and $Q \in h[x_0, \varphi^n x_0]$ that are 0.65κ -far from x_0 and are 0.08κ -close to each other. We can take $P' \in \gamma$ that is 0.01κ -close to P and $Q' \in h\gamma$ that is 0.01κ -close to Q . Then $d(P', Q') \leq 0.1\kappa$ and $\pi_\gamma(Q')$ is 0.2κ -close to P' . Since $d(x_0, P') \geq 0.64\kappa$, $\pi_\gamma(h\gamma)$ contains a point that is 0.44κ -far from x_0 .

On the other hand, $\pi_\gamma(h\gamma) \subset \gamma([-0.01\kappa, 0.01\kappa])$ and $d(x_0, \gamma(0)) \leq 0.01\kappa$. This is a contradiction. Therefore, $(x, h[x_0, \varphi^n x_0])$ is κ -aligned for all $n \in \mathbb{N}$.

Similarly, we conclude that $(x, h'[x_0, \varphi^n x_0])$ is κ -aligned for all $n \in \mathbb{N}$. The same argument applies after replacing id with h or h' . We conclude that there exist at least two elements $a \in \{id, h, h'\}$ such that $(x, a[x_0, \varphi^n x_0])$ is 100κ -aligned for all $n \in \mathbb{N}$. Likewise, for every $y \in X$, $(a^{-1}[\varphi^{-n} x_0, x_0], y)$ is 100κ -aligned for all $n \in \mathbb{N}$ for at least two elements $a \in \{id, h, h'\}$. Hence, we can choose $a \in \{id, h, h'\}$ that works for both x and y . \square

5.6. Horofunctions and cocycles. Let $\text{Lip}^1(X)$ be the space of \mathbb{R} -valued 1-Lipschitz functions on X and let $\text{Lip}_{x_0}^1(X)$ be its subspace vanishing at the basepoint x_0 , i.e.,

$$\begin{aligned} \text{Lip}^1(X) &:= \{f : X \rightarrow \mathbb{R} : f \text{ is 1-Lipschitz}\}, \\ \text{Lip}_{x_0}^1(X) &:= \{f \in \text{Lip}^1(X) : f(x_0) = 0\}, \end{aligned}$$

equipped with the compact-open topology. Here, $\text{Lip}_{x_0}^1$ is closed in $\text{Lip}^1(X)$.

Recall that X is separable as it is given a proper metric. Therefore, $\text{Lip}_{x_0}^1(X)$ is compact, Hausdorff, and second countable [MT18, Proposition 3.1]. Hence, it is completely metrizable and is Polish. We identify $\text{Lip}^1(X)$ and $\text{Lip}_{x_0}^1(X) \times \mathbb{R}$ via the homeomorphism

$$(5.1) \quad f \in \text{Lip}^1(X) \mapsto (f - f(x_0), f(x_0)).$$

The group $\text{Isom}(X)$ naturally acts on $\text{Lip}^1(X)$ by $g \cdot f := f \circ g^{-1}$ for $g \in \text{Isom}(X)$ and $f \in \text{Lip}^1(X)$. However, this action does not leave $\text{Lip}_{x_0}^1(X)$ invariant.

Due to this subtlety, we identify $\text{Lip}_{x_0}^1(X)$ with the space of \mathbb{R} -valued 1-Lipschitz cocycles on X , i.e., $c : X \times X \rightarrow \mathbb{R}$ such that $|c(x, y)| \leq d(x, y)$ and $c(x, z) = c(x, y) + c(y, z)$ for all $x, y, z \in X$. For each $f \in \text{Lip}^1(X)$, we

define the associated cocycle $\beta_f : X \times X \rightarrow \mathbb{R}$ by

$$\beta_f(x, y) = f(x) - f(y).$$

Its restriction to $\text{Lip}_{x_0}^1(X)$ gives the homeomorphism between $\text{Lip}_{x_0}^1(X)$ and the space of all \mathbb{R} -valued continuous cocycles. Then the identification $\text{Lip}^1(X) \simeq \text{Lip}_{x_0}^1(X) \times \mathbb{R}$ in Equation (5.1) can be rephrased as

$$f \mapsto (\beta_f, f(x_0)).$$

The $\text{Isom}(X)$ -action on $\text{Lip}^1(X)$ is now given as follows: for $g \in \text{Isom}(X)$ and $f \in \text{Lip}^1(X)$,

$$g \cdot (\beta_f, f(x_0)) = (\beta_{g \cdot f}, f(x_0) + \beta_f(g^{-1}x_0, x_0)).$$

Note that on the first component, which corresponds to $\text{Lip}_{x_0}^1(X)$, we have $\beta_f \mapsto \beta_{g \cdot f}$.

There is a natural embedding $\iota : X \hookrightarrow \text{Lip}_{x_0}^1(X)$, defined by

$$\iota : z \in X \mapsto [f_z(\cdot) := d(\cdot, z) - d(x_0, z)].$$

The closure of $\iota(X) \subset \text{Lip}_{x_0}^1(X)$ is called the *horofunction compactification* of X and is denoted by \overline{X}^h . The complement $\overline{X}^h \setminus \iota(X)$ is called the *horofunction boundary* (or *horoboundary*) of X and is denoted by $\partial^h X$.

As the space $\text{Lip}_{x_0}^1(X)$ is identified with the space of 1-Lipschitz cocycles, we also regard elements of $\partial^h X$ as *Busemann cocycles*, by identifying

$$f \in \partial^h X \longleftrightarrow \beta_f(\cdot, \cdot).$$

Using this identification, the $\text{Isom}(X)$ -action on $\partial^h X$ is given by

$$\beta_f(\cdot, \cdot) \mapsto \beta_{g \cdot f}(\cdot, \cdot) \quad \text{for } g \in \text{Isom}(X) \text{ and } f \in \partial^h X.$$

This is the continuous extension of the isometric action of $\text{Isom}(X)$ on X in the following sense. Let $\{z_i\}_{i \in \mathbb{N}} \subset X$ be a sequence such that $f_{z_i} \rightarrow f \in \text{Lip}_{x_0}^1(X)$. Then for every $g \in \text{Isom}(X)$, we have

$$\begin{aligned} d(\cdot, gz_i) - d(x_0, gz_i) &= d(g^{-1}(\cdot), z_i) - d(x_0, z_i) + d(x_0, z_i) - d(g^{-1}x_0, z_i) \\ &\rightarrow f(g^{-1}(\cdot)) - f(g^{-1}x_0). \end{aligned}$$

This implies

$$\beta_{f_{z_i}}(\cdot, \cdot) \rightarrow \beta_{g \cdot f}(\cdot, \cdot).$$

In terms of the identification $\text{Lip}^1(X) \simeq \text{Lip}_{x_0}^1(X) \times \mathbb{R}$, the subspace of $\text{Lip}^1(X)$ corresponding to $\partial^h X$ is the space

$$(5.2) \quad \mathcal{H} := \partial^h X \times \mathbb{R},$$

which is $\text{Isom}(X)$ -invariant. As a subspace of $\text{Lip}^1(X)$, \mathcal{H} does not depend on the choice of the basepoint $x_0 \in X$. What depends on the choice of x_0 is the description of $\text{Isom}(X)$ -action on \mathcal{H} in terms of the identification $\mathcal{H} = \partial^h X \times \mathbb{R}$.

We call elements of $\partial^h X \times \mathbb{R}$ *horofunctions*. Horofunctions that differ by an additive constant correspond to the same Busemann cocycle.

Both $\partial^h X$ and $\mathcal{H} = \partial^h X \times \mathbb{R}$ are Polish. Hence, every locally finite Borel measure on these spaces is Radon, i.e., it is both inner and outer regular on Borel subsets.

We now extend the notion of alignment to horofunctions.

Definition 5.13. Let $\xi \in \partial^h X$ and $\gamma \subset X$ be a compact geodesic. For $K \geq 0$, we say that (ξ, γ) is K -aligned if for every sequence $\{z_i\}_{i \in \mathbb{N}} \subset X$ converging to ξ , (z_i, γ) is K -aligned eventually (i.e., for all large $i \in \mathbb{N}$). We define the alignment for (γ, ξ') and (ξ, γ, ξ') similarly for $\xi' \in \overline{X}^h$.

By abuse of notation, for a Busemann cocycle β_ξ that corresponds to $\xi \in \partial^h X$, we say that (β_ξ, γ) is K -aligned when (ξ, γ) is K -aligned. Lastly, for an element $f \in \mathcal{H}$, we say that (f, γ) is K -aligned if (β_f, γ) is K -aligned. We define the alignment for triples similarly.

For contracting geodesics, we observe the following:

Lemma 5.14. *Let $\gamma \subset X$ be a C -contracting compact geodesic for $C > 0$. Let $\xi \in \partial^h X$ and $\{z_i\}_{i \in \mathbb{N}} \subset X$ be a sequence converging to ξ . Then we have*

$$\limsup_{N \rightarrow +\infty} \text{Diam} \bigcup_{k \geq N} \pi_\gamma(z_k) \leq 9C.$$

Proof. Since γ is compact and $z_n \rightarrow \xi$, there exists $N > 0$ such that

$$d(x, z_k) - d(y, z_k) =_{0.1C} d(x, z_l) - d(y, z_l) \quad \text{for all } k, l > N \text{ and } x, y \in \gamma.$$

Now suppose to the contrary that $\text{Diam}(\pi_\gamma(z_k) \cup \pi_\gamma(z_l)) > 9C$ for some $k, l > N$. Then by Lemma 5.2, there exist $p, q \in [z_k, z_l]$ such that

$$\text{Diam}(\{p\} \cup \pi_\gamma(z_k)) \leq 2C \quad \text{and} \quad \text{Diam}(\{q\} \cup \pi_\gamma(z_l)) \leq 2C.$$

Note that $d(p, q) > 5C$. Let $p' \in \pi_\gamma(z_k)$ and $q' \in \pi_\gamma(z_l)$ be arbitrary points. We then have

$$d(z_k, p') \leq d(z_k, p) + 2C \leq (d(z_k, q) - 5C) + 2C \leq d(z_k, q') - C.$$

For a similar reason, we have $d(z_l, q') \leq d(z_l, p') - C$. This contradicts the condition for $k, l > N$. \square

The following version of extension lemma can easily be deduced from Lemma 5.12 and Lemma 5.14:

Lemma 5.15 (Extension lemma). *Let $\Gamma < \text{Isom}(X)$ be a non-elementary subgroup. Let $\varphi \in \Gamma$ be a contracting isometry, and let $\kappa = \kappa(\varphi) > 0$ and $a_1, a_2, a_3 \in \Gamma$ be as given in Lemma 5.12. Then for each $\xi, \xi' \in \overline{X}^h$, there exists $a \in \{a_1, a_2, a_3\}$ such that*

$$(\xi, a \cdot [x_0, \varphi^n x_0], a\varphi^n a \cdot \xi') \quad \text{is } 10\kappa\text{-aligned for all } n \in \mathbb{N}.$$

Remark 5.16. There is a way to extend the the nearest-point projection $\pi_\gamma(\cdot)$ to \overline{X}^h (cf. [Cou24, Definition 3.8]). For $\xi \in \partial^h X$, we can define

$$\pi_\gamma(h) := \left\{ x \in \gamma : \beta_\xi(x, x_0) = \inf_{y \in \gamma} \beta_\xi(y, x_0) \right\}.$$

Then one can show that if $\{z_i\}_{i \in \mathbb{N}} \subset X$ is a sequence converging to $\xi \in \partial^h X$, then $\pi_\gamma(z_i) \rightarrow \pi_\gamma(\xi)$ up to a uniform error. One can define alignment in terms of this extended nearest-point projection as well.

5.7. Conical limit sets. We finish this section by defining conical limit sets, which are also called radial limit sets.

Definition 5.17. Let $\Gamma < \text{Isom}(X)$ be a subgroup acting properly on X . A point $\xi \in \partial^h X$ is called a *conical limit point* of Γ if there exist $K > 0$ and an infinite sequence $\{g_n\}_{n \in \mathbb{N}} \subset \Gamma$ such that

$$\beta_\xi(x_0, g_n x_0) \geq d(x_0, g_n x_0) - K \quad \text{for all } n \in \mathbb{N}.$$

We denote the *conical limit set* by $\Lambda_c(\Gamma) \subset \partial^h X$.

For example, given a geodesic ray $\gamma \subset X$ whose K -neighborhood contains infinitely many points in a Γ -orbit, the horofunction made as a limit point of γ is conical. One can see that $\Lambda_c(\Gamma)$ is Γ -invariant.

6. PATTERSON–SULLIVAN THEORY WITH SQUEEZING ISOMETRIES

In this section, we review Coulon’s and Yang’s extensions of the Patterson–Sullivan theory about conformal densities ([Cou24], [Yan24]). Continuing the setting of Section 5, we let (X, d) be a proper geodesic metric space. Given a non-elementary subgroup $\Gamma < \text{Isom}(X)$ with a squeezing isometry, we focus on a certain subset of the conical limit set of Γ and study its properties from the viewpoint of theories of Coulon and Yang.

In the rest of this section, we fix a basepoint $x_0 \in X$. The notion of conformal density plays an important role.

Definition 6.1. For $\Gamma < \text{Isom}(X)$ and $\delta \geq 0$, a family of Borel measures $\{\nu_x\}_{x \in X}$ on $\partial^h X$ is called a δ -dimensional conformal density of Γ if

- (Γ -invariance) for every $g \in \Gamma$ and $x \in X$,

$$g_* \nu_x = \nu_{gx},$$

- (δ -conformality) for every $x, y \in X$, two measures ν_x and ν_y are in the same class and

$$\frac{d\nu_x}{d\nu_y}(\xi) = e^{-\delta \cdot \beta_\xi(x, y)} \quad \text{a.e., and}$$

- (normalization) $\nu_{x_0}(\partial^h X) = 1$.

Note that the normalization is only for convenience, in order to have uniqueness of a conformal density in a certain case.

In our setting, Coulon and Yang constructed conformal densities, extending the construction of Patterson [Pat76] and Sullivan [Sul79] for the case that X is a real hyperbolic space. For a subgroup $\Gamma < \text{Isom}(X)$ that acts properly on X , the *critical exponent* $\delta_\Gamma \geq 0$ of Γ is defined as the abscissa of convergence of the Poincaré series $s \mapsto \sum_{g \in \Gamma} e^{-sd(x, gx)}$, $x \in X$.

Proposition 6.2 ([Cou24, Proposition 4.3], [Yan24, Lemma 6.3]). *Let $\Gamma < \text{Isom}(X)$ be a non-elementary subgroup such that $\delta_\Gamma < +\infty$. Then there exists a δ_Γ -dimensional conformal density of Γ .*

6.1. Guided limit sets. The following notion is a variant of Coulon's contracting limit sets [Cou24] and Yang's (L, \mathcal{F}) -limit sets [Yan24].

Definition 6.3. Let $\Gamma < \text{Isom}(X)$ be a non-elementary subgroup. Let $\varphi \in \Gamma$ be a contracting isometry and let $C(\varphi) > 0$ be as in Lemma 5.9 and fix $K \geq C(\varphi)$. We say that $\xi \in \partial^h X$ is a (φ, K) -guided limit point of Γ if for each sufficiently large $n \in \mathbb{N}$, there exists $h \in \Gamma$ such that

$$(x_0, h[x_0, \varphi^n x_0], \xi) \text{ is } K\text{-aligned.}$$

The collection of (φ, K) -guided limit points of Γ is called the (φ, K) -guided limit set of Γ . We denote it by $\Lambda_{\varphi, K}(\Gamma)$.

Later, $\varphi \in \Gamma$ is often assumed to be squeezing. In such cases, we give special names to (φ, K) -guided limit points and the (φ, K) -guided limit set, (φ, K) -squeezed limit points and the (φ, K) -squeezed limit set, respectively.

We first discuss some properties of guided limit sets.

Lemma 6.4. *Let $\Gamma < \text{Isom}(X)$ be a non-elementary subgroup. Let $\varphi \in \Gamma$ be a contracting isometry and let $C = C(\varphi) > 0$ be as in Lemma 5.9. Then for each $K > C$,*

$$\Lambda_{\varphi, K}(\Gamma) = \Lambda_{\varphi, C}(\Gamma).$$

Moreover, $\Lambda_{\varphi, C}(\Gamma)$ is Γ -invariant.

Proof. Let $\gamma : \mathbb{R} \rightarrow X$ be an axis of φ chosen for the constant $C = C(\varphi)$ in Lemma 5.9. Fix $K > C$. We then set

$$N = \lceil (K + 100C)/\tau_\varphi \rceil.$$

Now pick an arbitrary $\xi \in \Lambda_{\varphi, K}(\Gamma)$ and let $\{z_i\}_{i \in \mathbb{N}} \subset X$ be a sequence converging to ξ . Since ξ is (φ, K) -guided, for each large enough $n \in \mathbb{N}$ there exists $h \in \Gamma$ such that $(x_0, h[x_0, \varphi^{n+2N} x_0], z_i)$ is K -aligned for all large $i \in \mathbb{N}$. Since $d(x_0, \varphi^{n+2N} x_0) \geq (n + 2N)\tau_\varphi > K + C$, Lemma 5.9(4) tells us that

$$\begin{aligned} \pi_{h\gamma}(x_0) &\subset h\gamma((-\infty, K + C]) \quad \text{and} \\ \pi_{h\gamma}(z_i) &\subset h\gamma\left(\left[(n + 2N)\tau_\varphi - K - C, +\infty\right)\right) \quad \text{for all large } i \in \mathbb{N}. \end{aligned}$$

We now show that

$$(x_0, h\varphi^N[x_0, \varphi^n x_0], \xi) \text{ is } C\text{-aligned.}$$

Suppose to the contrary that $(x_0, h\varphi^N[x_0, \varphi^n x_0])$ is not C -aligned. Then by Lemma 5.9(3), we have $\pi_{h\gamma}(x_0) \subset h\gamma([\tau_\varphi N, +\infty))$. Since $K + C < \tau_\varphi N$, this is a contradiction. Therefore, $(x_0, h\varphi^N[x_0, \varphi^n x_0])$ is C -aligned.

Similarly, using $(n + 2N)\tau_\varphi - K - C > (n + N)\tau_\varphi$, we deduce that $(h\varphi^N[x_0, \varphi^n x_0], z_i)$ is C -aligned for all large $i \in \mathbb{N}$. Since this is the case

for arbitrary sequence $\{z_i\}_{i \in \mathbb{N}} \subset X$ converging to ξ , $(x_0, h\varphi^N[x_0, \varphi^n x_0], \xi)$ is C -aligned. We conclude $\xi \in \Lambda_{\varphi, C}(\Gamma)$, proving the first statement.

We now show that $\Lambda_{\varphi, C}(\Gamma)$ is Γ -invariant. Fix $\xi \in \Lambda_{\varphi, C}(\Gamma)$ and $g \in \Gamma$. Then for each sufficiently large $n \in \mathbb{N}$, there exists $h \in \Gamma$ such that $(x_0, h[x_0, \varphi^n x_0], \xi)$ is C -aligned. It is clear that $(gx_0, gh[x_0, \varphi^n x_0], g\xi)$ is C -aligned. By Corollary 5.3(1), this implies that $(x_0, gh[x_0, \varphi^n x_0], g\xi)$ is $(5C + d(x_0, gx_0))$ -aligned. Hence, $g\xi$ is a $(\varphi, 5C + d(x_0, gx_0))$ -guided limit point of Γ , and therefore $g\xi \in \Lambda_{\varphi, C}(\Gamma)$ by the first statement. This shows the desired Γ -invariance. \square

Definition 6.5. We say that a non-elementary subgroup $\Gamma < \text{Isom}(X)$ is of *divergence type* if $\delta_\Gamma < +\infty$ and its Poincaré series diverges at δ_Γ , i.e., we have $\sum_{g \in \Gamma} e^{-\delta_\Gamma d(x_0, gx_0)} = +\infty$.

As a part of their generalizations of Hopf–Tsuji–Sullivan dichotomy, Coulon and Yang proved the following:

Proposition 6.6 ([Yan24, Theorem 1.14], [Cou24, Theorem 1.4]). *Let $\Gamma < \text{Isom}(X)$ be a non-elementary subgroup of divergence type. Let $\varphi \in \Gamma$ be a contracting isometry and let $C = C(\varphi) > 0$ be as in Lemma 5.9. Then for every δ_Γ -dimensional conformal density $\{\nu_x\}_{x \in X}$ of Γ and for every $x \in X$, $\Lambda_{\varphi, C}(\Gamma)$ is ν_x -conull.*

6.2. Squeezed limit sets and ergodic properties. As mentioned above, we call the guided limit sets for squeezing isometries the squeezed limit sets.

Definition 6.7. Let $\Gamma < \text{Isom}(X)$ be a non-elementary subgroup containing a squeezing isometry $\varphi \in \Gamma$. Let $C(\varphi) > 0$ be as in Lemma 5.9 and fix $K \geq C(\varphi)$. We say that $\xi \in \partial^h X$ is a (φ, K) -squeezed limit point of Γ if for each sufficiently large $n \in \mathbb{N}$, there exists $h \in \Gamma$ such that

$$(x_0, h[x_0, \varphi^n x_0], \xi) \text{ is } K\text{-aligned.}$$

The collection of (φ, K) -squeezed limit points of Γ is called the (φ, K) -squeezed limit set of Γ . We use the same notation $\Lambda_{\varphi, K}(\Gamma)$ for this.

This notion of squeezed limit sets plays a key role in this paper. Importantly, the following observation allows us to establish the ergodicity of conformal densities on $\partial^h X$, as we will see. In the following, we regard points in $\partial^h X$ as horofunctions $X \rightarrow \mathbb{R}$ vanishing at x_0 .

Lemma 6.8. *Let $\Gamma < \text{Isom}(X)$ be a non-elementary subgroup containing a squeezing isometry $\varphi \in \Gamma$. Let $C = C(\varphi) > 0$ be as in Lemma 5.9. For $\xi, \zeta \in \partial^h X$, if $\xi \in \Lambda_{\varphi, C}(\Gamma)$ and $\|\xi - \zeta\|_\infty < +\infty$, then $\xi = \zeta$.*

Proof. Let $\gamma : \mathbb{R} \rightarrow X$ be the unique axis of φ . Let $\xi, \zeta \in \partial^h X$ given as in the statement, regarding them as horofunctions vanishing at x_0 . Let $B := \|\xi - \zeta\|_\infty < +\infty$. This implies that for every $x \in X$ we have

$$(6.1) \quad \xi(x) =_B \zeta(x).$$

We fix an arbitrary $x \in X$ and an arbitrary $\epsilon > 0$. Our goal is to prove that $\xi(x) =_\epsilon \zeta(x)$. Let $L = L(0.01\epsilon) > 0$ be as in Definition 5.5 for γ , and let $n \in \mathbb{N}$ be a sufficiently large integer such that

$$n > \frac{100(L + C + B + d(x_0, x))}{\tau_\varphi}.$$

Now, let $\{z_i\}_{i \in \mathbb{N}} \subset X$ be a sequence converging to ξ . Since $\xi \in \Lambda_{\varphi, C}(\Gamma)$, there exists $h \in \Gamma$ such that $(x_0, h[x_0, \varphi^n x_0], z_i)$ is C -aligned for all large $i \in \mathbb{N}$. Since $n\tau_\varphi - C > C$, Lemma 5.9(4) tells us that

$$(6.2) \quad \begin{aligned} \pi_{h\gamma}(x_0) &\subset h\gamma((-\infty, 2C]) \quad \text{and} \\ \pi_{h\gamma}(z_i) &\subset h\gamma([n\tau_\varphi - 2C, +\infty)) \quad \text{for all large } i \in \mathbb{N}. \end{aligned}$$

Since $\pi_\gamma(\cdot)$ is $(1, 4C)$ -Lipschitz by Corollary 5.3(1), we have

$$\pi_{h\gamma}(x) \subset h\gamma((-\infty, 6C + d(x_0, x)]).$$

By Corollary 5.3(2), Equation (6.2) implies that

$$(6.3) \quad d(z_i, h\gamma(n\tau_\varphi - 2C)) - d(z_i, h\gamma(n\tau_\varphi - 19C - 2B)) =_{8C} -(2B + 17C).$$

Now let $\{z'_i\}_{i \in \mathbb{N}} \subset X$ be a sequence converging to ζ .

Claim. *We have*

$$(6.4) \quad \pi_{h\gamma}(z'_i) \subset h\gamma([n\tau_\varphi - 20C - 2B, +\infty)) \quad \text{for all large } i \in \mathbb{N}.$$

Suppose to the contrary that, passing to a subsequence, we have

$$(6.5) \quad \pi_{h\gamma}(z'_i) \subset h\gamma((-\infty, n\tau_\varphi - 18C - 2B]) \quad \text{for all } i \in \mathbb{N}.$$

Here, the fact that $\pi_{h\gamma}(z'_i)$ is $2C$ -small is used. By Corollary 5.3(2), Equation (6.5) implies that

$$d(z'_i, h\gamma(n\tau_\varphi - 2C)) - d(z'_i, h\gamma(n\tau_\varphi - 18C - 2B)) =_{8C} 2B + 16C.$$

Comparing this with Equation (6.3), we observe that $\xi(a) - \xi(b)$ and $\zeta(a) - \zeta(b)$ differ by more than $4B$ for two points $a := h\gamma(n\tau_\varphi - 2C)$ and $b := h\gamma(n\tau_\varphi - 19C - 2B)$. This contradicts Equation (6.1). The claim follows.

Hence, Equation (6.4) holds. Therefore, for each large enough i we have

$$\begin{aligned} \pi_{h\gamma}(x_0), \pi_{h\gamma}(x) &\subset h\gamma((-\infty, 6C + d(x_0, x)]) \quad \text{and} \\ \pi_{h\gamma}(z_i), \pi_{h\gamma}(z'_i) &\subset h\gamma([n\tau_\varphi - 20C - 2B, +\infty)). \end{aligned}$$

Since $n\tau_\varphi - 20C - 2B \geq 6C + d(x_0, x) + 2L$, we conclude from Lemma 5.6 that $d(x_0, z_i) - d(x, z_i) =_\epsilon d(x_0, z'_i) - d(x, z'_i)$. Since both ξ and ζ are horofunctions vanishing at x_0 , taking the limit $i \rightarrow +\infty$ yields $\xi(x) =_\epsilon \zeta(x)$. \square

To discuss ergodicity of conformal densities, Coulon [Cou24] considered conformal densities restricted to the *reduced horoboundary* instead of the usual horoboundary. Yang [Yan24] considered another notion encompassing the reduced horoboundary, namely, the *reduced convergence boundary*.

Instead of defining these objects precisely, let us point out that Coulon's and Yang's ergodicity results are formulated in terms of saturated Borel

subsets of $\partial^h X$, that is, $E \subset \partial^h X$ with a property that if $\xi \in E$ and $\zeta \in \partial^h X$ satisfy $\|\xi - \zeta\|_\infty < +\infty$, then $\zeta \in E$. Hence, by Proposition 6.6 and Lemma 6.8, their ergodicity results can be stated as follows:

Proposition 6.9 ([Yan24, Theorem 1.16], [Cou24, Theorem 1.5]). *Let $\Gamma < \text{Isom}(X)$ be a non-elementary subgroup containing a squeezing isometry, and let $\{\nu_x\}_{x \in X}$ be a δ_Γ -dimensional conformal density of Γ . If Γ is of divergence type, then the Γ -action on $(\partial^h X, \nu_x)$ is ergodic for all $x \in X$.*

The above ergodicity indeed implies the uniqueness of δ_Γ -dimensional conformal density when Γ is as in Proposition 6.9. Indeed, if $\{\nu_x\}_{x \in X}$ and $\{\nu'_x\}_{x \in X}$ are δ_Γ -dimensional conformal densities of Γ , then $\{(\nu_x + \nu'_x)/2\}_{x \in X}$ is also a δ_Γ -dimensional conformal density of Γ . Since ν_x is absolutely continuous with respect to $(\nu_x + \nu'_x)/2$ for each $x \in X$, the ergodicity applies to their Radon–Nikodym derivatives which are Γ -invariant due to the conformality. Therefore, $\nu_x = \nu'_x$ for all $x \in X$.

7. RIGIDITY OF ERGODIC INVARIANT RADON MEASURES

Let (X, d) be a proper, geodesic metric space. In this section, we prove the rigidity of ergodic, invariant Radon measures (Theorem 1.11).

7.1. Candidates for measures. We first define a Radon measure which will be the unique measure with the desired properties in our rigidity theorem. To do this, we fix a basepoint $x_0 \in X$ and identify $\mathcal{H} = \partial^h X \times \mathbb{R}$ as in Equation (5.2). Recall that the $\text{Isom}(X)$ -action on \mathcal{H} is written as follows: for $g \in \text{Isom}(X)$ and $(\xi, t) \in \mathcal{H}$, we have

$$g(\xi, t) = (g\xi, t + \beta_\xi(g^{-1}x_0, x_0)).$$

Via this identification, we define a Radon measure on \mathcal{H} as follows:

Definition 7.1. Let $\Gamma < \text{Isom}(X)$ be a non-elementary subgroup containing a squeezing isometry and $\nu := \{\nu_x\}_{x \in X}$ be a δ_Γ -dimensional conformal density of Γ . We define a Radon measure μ_ν on $\mathcal{H} = \partial^h X \times \mathbb{R}$ by setting

$$d\mu_\nu(\xi, t) := e^{\delta_\Gamma t} \cdot d\nu_{x_0}(\xi) dt.$$

When Γ is of divergence type in addition, we write

$$\mu_\Gamma := \mu_\nu.$$

Remark 7.2. It follows from the conformality of ν that μ_ν is Γ -invariant. Moreover, considering \mathcal{H} as a subspace of $\text{Lip}^1(X)$, the measure μ_Γ does not depend on the choice of $x_0 \in X$. When Γ is of divergence type, there exists a unique δ_Γ -dimensional conformal density $\{\nu_x\}_{x \in X}$ of Γ by Proposition 6.2 and Proposition 6.9. This is a reason for writing $\mu_\Gamma = \mu_\nu$ in this case.

To present a precise statement, we also consider the following notion for the distribution of translation lengths of squeezing isometries.

Definition 7.3. For a subgroup $\Gamma < \text{Isom}(X)$, its *squeezing spectrum* is

$$\text{Spec}_{sq}(\Gamma) := \{\tau_g \in \mathbb{R} : g \in \Gamma \text{ is a squeezing isometry}\}.$$

We say that the squeezing spectrum is *non-arithmetic* if it generates a dense additive subgroup of \mathbb{R} .

7.2. Rigidity of measures. Let us restate Theorem 1.11, our main rigidity theorem. Recall the notion of conical limit set from Definition 5.17.

Theorem 7.4. *Let $\Gamma < \text{Isom}(X)$ be a non-elementary subgroup with non-arithmetic squeezing spectrum. Suppose that there exists a Γ -invariant Radon measure μ on \mathcal{H} supported on $\Lambda_c(\Gamma) \times \mathbb{R}$. Then Γ is of divergence type and μ is a constant multiple of μ_Γ .*

The rest of this section is devoted to the proof of Theorem 7.4. We prove the theorem by establishing a robust relationship between invariant Radon measures and squeezed limit sets. Note that due to ergodic decompositions, it suffices to consider invariant *ergodic* measures.

7.3. Concentration on squeezed limit sets. We first show that invariant ergodic Radon measures on \mathcal{H} are charged on squeezed limit sets. We emphasize that in the following, we consider an arbitrary Radon measure on \mathcal{H} , not necessarily induced from a conformal density.

Theorem 7.5. *Let $\Gamma < \text{Isom}(X)$ be a non-elementary subgroup, let φ be a contracting isometry in Γ and let $C = C(\varphi)$ be as in Lemma 5.9. Let μ be a Γ -invariant ergodic Radon measure on \mathcal{H} supported on $\Lambda_c(\Gamma) \times \mathbb{R}$. Then the measure μ is supported on*

$$\Lambda_{\varphi, C}(\Gamma) \times \mathbb{R} \subset \mathcal{H}.$$

Proof. Let $\kappa(\varphi) > 0$ and $a_1, a_2, a_3 \in \Gamma$ be as in Lemma 5.12 for Γ . Let $C(\varphi) > 0$ be as in Lemma 5.9 for $g = \varphi$. We set $C_0 := 10(\kappa(\varphi) + C(\varphi))$.

For each $K > 0$ let

$$\mathcal{H}_K := \left\{ (\xi, t) \in \mathcal{H} : \begin{array}{l} \exists \text{ an infinite sequence } \{g_i\}_{i \in \mathbb{N}} \subset \Gamma \text{ s.t.} \\ \beta_\xi(x_0, g_i x_0) \geq d(x_0, g_i x_0) - K \text{ for all } i \in \mathbb{N} \end{array} \right\}.$$

Then $\Gamma \cdot \mathcal{H}_K \subset \mathcal{H}$ is Γ -invariant. Moreover,

$$\Lambda_c(\Gamma) \times \mathbb{R} = \bigcup_{K > 0} \Gamma \cdot \mathcal{H}_K.$$

Since $\Lambda_c \Gamma \times \mathbb{R}$ has positive μ -value,

$$\Gamma \cdot \mathcal{H}_K \text{ has positive } \mu\text{-value for all large } K > 0.$$

We fix such $K > 100C_0 + 2 \sum_{i=1}^3 d(x_0, a_i x_0)$. Then it follows from the Γ -invariance of μ that $\mu(\mathcal{H}_K) > 0$. For each $R > 0$, we set $\mathcal{H}_{K,R} := \{(\xi, t) \in \mathcal{H}_K : -R \leq t \leq R\}$. Since $\mathcal{H}_K = \bigcup_{R=1}^{\infty} \mathcal{H}_{K,R}$,

$$\mu(\mathcal{H}_{K,R}) > 0 \text{ for all large } R > 0.$$

We fix such $R > 0$.

Now we pick $n > 100(C_0 + K)/\tau_\varphi$ and $k > 0$. We define a map

$$F = F_{n,k} : \mathcal{H}_{K,R} \rightarrow \mathcal{H}$$

as follows. For each $\mathfrak{X} \in \mathcal{H}_{K,R}$, there exists $g \in \Gamma$ such that

$$(7.1) \quad d(x_0, gx_0) > k \quad \text{and} \quad \beta_{\mathfrak{X}}(x_0, gx_0) \geq d(x_0, gx_0) - K.$$

Among all such g 's, take the one with minimal $d(x_0, gx_0)$ and call it $g_{\mathfrak{X}}$.³ Then the map $\mathfrak{X} \in \mathcal{H}_{K,R} \mapsto g_{\mathfrak{X}}$ is Borel measurable. By Lemma 5.15, there exists $a_{\mathfrak{X}} \in \{a_1, a_2, a_3\}$ such that⁴

$$(7.2) \quad (x_0, g_{\mathfrak{X}} \cdot a_{\mathfrak{X}}[x_0, \varphi^n x_0], g_{\mathfrak{X}} \cdot a_{\mathfrak{X}} \varphi^n a_{\mathfrak{X}} \cdot g_{\mathfrak{X}}^{-1} \mathfrak{X}) \quad \text{is } C_0\text{-aligned.}$$

This map $\mathfrak{X} \mapsto a_{\mathfrak{X}}$ is also Borel measurable. We now set

$$F(\mathfrak{X}) := g_{\mathfrak{X}} \cdot a_{\mathfrak{X}} \varphi^n a_{\mathfrak{X}} \cdot g_{\mathfrak{X}}^{-1} \mathfrak{X}.$$

Let

$$D := 100 \left(C_0 + \tau_\varphi n + \sum_{i=1}^3 d(x_0, a_i x_0) \right).$$

Claim. *We have that*

$$(7.3) \quad F \text{ is at most } 3 \cdot \#\{g \in \Gamma : d(x_0, gx_0) \leq D\}\text{-to-one.}$$

To prove this claim, suppose that we have $\mathfrak{X}, \mathfrak{X}' \in \mathcal{H}_{K,R}$ with the same image $F(\mathfrak{X}) = F(\mathfrak{X}') =: (\xi_0, t_0) \in \partial^h X \times \mathbb{R}$.

Let $\{u_i\}_{i \in \mathbb{N}} \subset X$ be a sequence converging to ξ_0 . Up to a subsequence,

$$(x_0, g_{\mathfrak{X}} a_{\mathfrak{X}}[x_0, \varphi^n x_0], u_i) \quad \text{is } C_0\text{-aligned for all } i \in \mathbb{N}.$$

Here, note that $d(x_0, \varphi^n x_0) \geq \tau_\varphi n \geq 100C_0$. It follows from Lemma 5.2 that for each $i \in \mathbb{N}$, there exists $P \in [x_0, u_i]$ such that $d(g_{\mathfrak{X}} a_{\mathfrak{X}} x_0, P) \leq 3C_0$, and similarly, there exists $Q \in [x_0, u_i]$ such that $d(g_{\mathfrak{X}'} a_{\mathfrak{X}'} x_0, Q) \leq 3C_0$. We have three cases.

- (1) If $d(x_0, g_{\mathfrak{X}} x_0) < d(x_0, g_{\mathfrak{X}'} x_0) - 0.5D$: In this case, along $[x_0, u_i]$, P is closer to x_0 than Q is, and $d(P, Q) \geq 0.5D - 6C_0$. For convenience we write $\eta := g_{\mathfrak{X}} a_{\mathfrak{X}}[x_0, \varphi^n x_0]$. Note that

$$\begin{aligned} d(u_i, \eta) &\geq d(u_i, g_{\mathfrak{X}} a_{\mathfrak{X}} x_0) - d(g_{\mathfrak{X}} a_{\mathfrak{X}} x_0, g_{\mathfrak{X}} a_{\mathfrak{X}} \varphi^n x_0) \\ &\geq d(u_i, P) - 3C_0 - d(x_0, \varphi^n x_0) \\ &\geq d(u_i, Q) + 0.2D \\ &> d(u_i, g_{\mathfrak{X}'} a_{\mathfrak{X}'} x_0) + d(a_{\mathfrak{X}'} x_0, x_0) + C_0 \\ &\geq d(u_i, g_{\mathfrak{X}'} x_0) + C_0. \end{aligned}$$

³A technicality arises when several candidates tie. An easy rescue is to first enumerate $\Gamma = \{g^{(1)}, g^{(2)}, \dots\}$, and choose the earliest whenever there is a tie.

⁴Again, when more than one of $\{a_1, a_2, a_3\}$ do the job we choose the earliest.

This implies that $d(\eta, [u_i, g_{\mathfrak{X}'}x_0]) \geq C_0$. Since η is C_0 -contracting, $\text{Diam } \pi_\eta([u_i, g_{\mathfrak{X}'}x_0]) \leq C_0$. Since (x_0, η, u_i) is C_0 -aligned, we also have that

$$(7.4) \quad (x_0, \eta, g_{\mathfrak{X}'}x_0) \text{ is } 2C_0\text{-aligned.}$$

Denote by $\xi' \in \partial^h X$ the Busemann cocycle component of \mathfrak{X}' and let $\{z'_i\}_{i \in \mathbb{N}} \subset X$ be a sequence converging to ξ' . We claim that

$$(7.5) \quad (\eta, z'_i) \text{ is } (K + 30C_0)\text{-aligned for all large } i \in \mathbb{N}.$$

Suppose to the contrary that, passing to a subsequence, (η, z'_i) is never $(K + 30C_0)$ -aligned. We choose

$$p \in \pi_\eta(x_0), \quad q \in \pi_\eta(z'_i), \quad \text{and} \quad r \in \pi_\eta(g_{\mathfrak{X}'}x_0).$$

By Equation (7.4) and the assumption that (η, z'_i) is not $(K + 30C_0)$ -aligned, r is closer to $g_{\mathfrak{X}}a_{\mathfrak{X}}\varphi^n x_0$ than p and q are. Moreover, we have $d(p, r), d(q, r) \geq K + 25C_0$. Now, it follows from Lemma 5.2 that

$$\begin{aligned} d(x_0, z'_i) &\leq d(x_0, \eta) + d(p, q) + d(\eta, z'_i), \\ d(g_{\mathfrak{X}'}x_0, z'_i) &=_{8C_0} d(g_{\mathfrak{X}'}x_0, \eta) + d(r, q) + d(\eta, z'_i), \quad \text{and} \\ d(x_0, g_{\mathfrak{X}'}x_0) &=_{8C_0} d(x_0, \eta) + d(p, r) + d(\eta, g_{\mathfrak{X}'}x_0). \end{aligned}$$

Then we have

$$\begin{aligned} d(x_0, g_{\mathfrak{X}'}x_0) + d(g_{\mathfrak{X}'}x_0, z'_i) - d(x_0, z'_i) \\ &\geq 2d(g_{\mathfrak{X}'}x_0, \eta) + 2 \min(d(p, r), d(q, r)) - 16C_0 \\ &\geq 2K + 34C_0. \end{aligned}$$

In particular, $d(x_0, z'_i) - d(g_{\mathfrak{X}'}x_0, z'_i) \leq d(x_0, g_{\mathfrak{X}'}x_0) - K - C_0$. Taking the limit $i \rightarrow +\infty$, we have

$$\beta_{\mathfrak{X}'}(x_0, g_{\mathfrak{X}'}x_0) \leq d(x_0, g_{\mathfrak{X}'}x_0) - K - C_0.$$

This contradicts the definition of $g_{\mathfrak{X}'}$, and therefore Equation (7.5) follows.

By Lemma 5.2, it follows from Equation (7.4) and Equation (7.5) that $[x_0, z'_i]$ passes through the $4C_0$ -neighborhood of $g_{\mathfrak{X}}a_{\mathfrak{X}}x_0$, for all large $i \in \mathbb{N}$. This implies

$$\beta_{\mathfrak{X}'}(x_0, g_{\mathfrak{X}}a_{\mathfrak{X}}x_0) \geq d(x_0, g_{\mathfrak{X}}a_{\mathfrak{X}}x_0) - 8C_0.$$

Since $K > 100C_0 + 2 \sum_{i=1}^3 d(x_0, a_i x_0)$, we have

$$\begin{aligned} \beta_{\mathfrak{X}'}(x_0, g_{\mathfrak{X}}x_0) &= \beta_{\mathfrak{X}'}(x_0, g_{\mathfrak{X}}a_{\mathfrak{X}}x_0) + \beta_{\mathfrak{X}'}(g_{\mathfrak{X}}a_{\mathfrak{X}}x_0, g_{\mathfrak{X}}x_0) \\ &\geq d(x_0, g_{\mathfrak{X}}a_{\mathfrak{X}}x_0) - 8C_0 - d(a_{\mathfrak{X}}x_0, x_0) \\ &\geq d(x_0, g_{\mathfrak{X}}x_0) - 8C_0 - 2d(a_{\mathfrak{X}}x_0, x_0) \\ &> d(x_0, g_{\mathfrak{X}}x_0) - K. \end{aligned}$$

Meanwhile, we also have $k < d(x_0, g_{\mathfrak{X}}x_0) < d(x_0, g_{\mathfrak{X}'}x_0) - 0.5D$. This contradicts the definition of $g_{\mathfrak{X}'}$ that $d(x_0, g_{\mathfrak{X}'}x_0)$ is minimal among the elements of Γ satisfying Equation (7.1).

- (2) If $d(x_0, g_{\mathfrak{X}'}x_0) < d(x_0, g_{\mathfrak{X}}x_0) - 0.5D$: In this case, one can obtain a similar contradiction as in (1).
- (3) If $d(x_0, g_{\mathfrak{X}}x_0) =_{0.5D} d(x_0, g_{\mathfrak{X}'}x_0)$: Recall that for each fixed $i \in \mathbb{N}$, we have $P, Q \in [x_0, u_i]$ such that $d(g_{\mathfrak{X}}a_{\mathfrak{X}}x_0, P), d(g_{\mathfrak{X}'}a_{\mathfrak{X}'}x_0, Q) \leq 3C_0$. Hence, we have

$$d(g_{\mathfrak{X}}x_0, P), d(g_{\mathfrak{X}'}x_0, Q) \leq 0.1D.$$

Since both P and Q belong to the geodesic $[x_0, u_i]$, this, together with $d(x_0, g_{\mathfrak{X}}x_0) =_{0.5D} d(x_0, g_{\mathfrak{X}'}x_0)$, implies

$$d(g_{\mathfrak{X}}x_0, g_{\mathfrak{X}'}x_0) \leq D.$$

Now when \mathfrak{X} is given (and hence $a_{\mathfrak{X}}, g_{\mathfrak{X}}$ are given as well),

$$\mathfrak{X}' = g_{\mathfrak{X}'}a_{\mathfrak{X}'}^{-1}\varphi^{-n}a_{\mathfrak{X}'}^{-1}(g_{\mathfrak{X}'}^{-1}g_{\mathfrak{X}})a_{\mathfrak{X}}\varphi^n a_{\mathfrak{X}}g_{\mathfrak{X}}^{-1}\mathfrak{X}$$

is determined by $g_{\mathfrak{X}'}^{-1}g_{\mathfrak{X}}$ and $a_{\mathfrak{X}'} \in \{a_1, a_2, a_3\}$. The number of these choices is at most $3 \cdot \#\{g \in \Gamma : d(x_0, gx_0) \leq D\}$.

Therefore, Equation (7.3) follows.

We simply write $M := 3 \cdot \#\{g \in \Gamma : d(x_0, gx_0) \leq D\}$. Then we have

$$\begin{aligned} \mu(F(\mathcal{H}_{K,R})) &= \mu\left(\bigcup_{g \in \Gamma, a \in \{a_1, a_2, a_3\}} F(\{\mathfrak{X} \in \mathcal{H}_{K,R} : g_{\mathfrak{X}} = g, a_{\mathfrak{X}} = a\})\right) \\ &\geq \frac{1}{M} \sum_{g \in \Gamma, a \in \{a_1, a_2, a_3\}} \mu(F(\{\mathfrak{X} \in \mathcal{H}_{K,R} : g_{\mathfrak{X}} = g, a_{\mathfrak{X}} = a\})) \\ &= \frac{1}{M} \sum_{g \in \Gamma, a \in \{a_1, a_2, a_3\}} \mu(ga\varphi^n ag^{-1}\{\mathfrak{X} \in \mathcal{H}_{K,R} : g_{\mathfrak{X}} = g, a_{\mathfrak{X}} = a\}) \\ &= \frac{1}{M} \sum_{g \in \Gamma, a \in \{a_1, a_2, a_3\}} \mu(\{\mathfrak{X} \in \mathcal{H}_{K,R} : g_{\mathfrak{X}} = g, a_{\mathfrak{X}} = a\}) \\ &= \frac{1}{M} \mu(\mathcal{H}_{K,R}). \end{aligned}$$

Now to see the image of F , let $\mathfrak{X} = (\xi, t) \in \mathcal{H}_{K,R}$. For simplicity, write $g := g_{\mathfrak{X}}$ and $a := a_{\mathfrak{X}}$. Then

$$F(\mathfrak{X}) = (ga\varphi^n ag^{-1}\xi, t + \beta_{\xi}((ga\varphi^n ag^{-1})^{-1}x_0, x_0)).$$

For each sequence $\{u_i\}_{i \in \mathbb{N}} \subset X$ converging to $ga\varphi^n ag^{-1}\xi \in \partial^h X$, we have

$$\begin{aligned} \beta_{\xi}((ga\varphi^n ag^{-1})^{-1}x_0, x_0) &= \beta_{ga\varphi^n ag^{-1}\xi}(x_0, ga\varphi^n ag^{-1}x_0) \\ &= \lim_{i \rightarrow +\infty} d(x_0, u_i) - d(ga\varphi^n ag^{-1}x_0, u_i). \end{aligned}$$

By Equation (7.2) and Lemma 5.2, we have for all large $i \in \mathbb{N}$ that

$$\begin{aligned}
\beta_\xi((ga\varphi^n ag^{-1})^{-1}x_0, x_0) &=_{15C_0} d(x_0, gax_0) + d(x_0, \varphi^n x_0) + d(ga\varphi^n x_0, u_i) \\
&\quad - d(ga\varphi^n ag^{-1}x_0, u_i) \\
&=_{C_0} d(x_0, gax_0) + d(x_0, \varphi^n x_0) \\
&\quad + \beta_{ga\varphi^n ag^{-1}\xi}(ga\varphi^n x_0, ga\varphi^n ag^{-1}x_0) \\
&=_{d(x_0, ax_0)} d(x_0, gx_0) + d(x_0, \varphi^n x_0) \\
&\quad + \beta_\xi(ga^{-1}x_0, gx_0) + \beta_\xi(gx_0, x_0) \\
&=_{d(x_0, ax_0)} d(x_0, gx_0) + d(x_0, \varphi^n x_0) + \beta_\xi(gx_0, x_0) \\
&=_K d(x_0, \varphi^n x_0).
\end{aligned}$$

Therefore,

$$t + \beta_\xi((ga\varphi^n ag^{-1})^{-1}x_0, x_0) \in [-R - D, R + D].$$

In addition, by Equation (7.2), we have $d(x_0, gax_0) > k - \sum_{i=1}^3 d(x_0, a_i x_0)$, and moreover, $(x_0, ga[x_0, \varphi^n x_0], F(\mathfrak{X}))$ is C_0 -aligned.

This implies that $F(\mathcal{H}_{K,R})$ is contained in

$$B_{k;n} := \left\{ (\zeta, s) \in \mathcal{H} : \begin{array}{l} -R - D \leq s \leq R + D \text{ and } \exists h \in \Gamma \text{ such that} \\ d(x_0, hx_0) > k - \sum_{i=1}^3 d(x_0, a_i x_0) \text{ and} \\ (x_0, h[x_0, \varphi^n x_0], \zeta) \text{ is } C_0\text{-aligned} \end{array} \right\}.$$

Hence, we have

$$\mu(B_{k;n}) \geq \mu(\mathcal{H}_{K,R})/M > 0.$$

Note that the set $B_{k;n}$ is decreasing in k . Since μ is a Radon measure and $B_{k;n} \subset \partial^h X \times [-R - D, R + D]$ which is *compact*, we have $\mu(B_{k;n}) < +\infty$. Therefore, setting

$$B_n := \bigcap_{k>0} B_{k;n},$$

we have

$$\mu(B_n) = \lim_{k \rightarrow +\infty} \mu(B_{k;n}) \geq \mu(\mathcal{H}_{K,R})/M > 0.$$

Now, $\Gamma \cdot B_n$ is a Γ -invariant set of positive μ -measure. Hence, by the Γ -ergodicity of μ , we have that $\Gamma \cdot B_n$ is μ -conull, and therefore

$$\bigcap_n \Gamma \cdot B_n \text{ is } \mu\text{-conull.}$$

We then show that for each $(\zeta, s) \in \bigcap_n \Gamma \cdot B_n$, we have $\zeta \in \Lambda_{\varphi, 2C_0}(\Gamma)$. This finishes the proof by Lemma 6.4.

Let $(\zeta, s) \in \bigcap_n \Gamma \cdot B_n$. Then for each large enough $n \in \mathbb{N}$, there exists $h_0 \in \Gamma$ so that

$$(x_0, h[x_0, \varphi^n x_0], h_0^{-1}\zeta) \text{ is } C_0\text{-aligned for infinitely many } h \in \Gamma.$$

In other words,

$$(h_0 x_0, h_0 h[x_0, \varphi^n x_0], \zeta) \text{ is } C_0\text{-aligned for infinitely many } h \in \Gamma.$$

Among infinitely many such $h \in \Gamma$, we can choose one such that

$$d(h_0x_0, h_0h[x_0, \varphi^n x_0]) > d(x_0, h_0x_0) + C_0$$

and hence

$$d([h_0x_0, x_0], h_0h[x_0, \varphi^n x_0]) > C_0.$$

Since $h_0h[x_0, \varphi^n x_0]$ is C_0 -contracting, we now have that $(x_0, h_0h[x_0, \varphi^n x_0])$ is $2C_0$ -aligned. Therefore,

$$(x_0, h_0h[x_0, \varphi^n x_0], \zeta) \text{ is } 2C_0\text{-aligned.}$$

Since this holds for all large $n \in \mathbb{N}$, we conclude that $\zeta \in \Lambda_{\varphi, 2C_0}(\Gamma)$. \square

Theorem 7.5 applies to each contracting isometry of Γ . We thus define:

Definition 7.6. Let $\Gamma < \text{Isom}(X)$ be a non-elementary subgroup. For each contracting isometry $\varphi \in \Gamma$, let $C(\varphi) > 0$ as in Lemma 5.9. We then define

$$\Lambda_{\text{Gui}}(\Gamma) := \bigcap_{\varphi \in \Gamma, \text{ contracting}} \Lambda_{\varphi, C(\varphi)}(\Gamma)$$

$$\Lambda_{\text{Sq}}(\Gamma) := \bigcap_{\varphi \in \Gamma, \text{ squeezing}} \Lambda_{\varphi, C(\varphi)}(\Gamma)$$

and call them *guided limit set* and *squeezed limit set* of Γ , respectively. In other words, every point in $\Lambda_{\text{Gui}}(\Gamma)$ is a $(\varphi, C(\varphi))$ -guided limit point of Γ for all contracting $\varphi \in \Gamma$.

Remark 7.7. The set $\Lambda_{\text{Gui}}(\Gamma)$ is closely related to the *Myrberg limit set*. A point $\xi \in \partial^h X$ is called a *Myrberg limit point* of Γ if there exists $c > 0$ such that for each $g \in \Gamma$, there exists $h \in \Gamma$ such that

$$h[x, \xi] \text{ is } c\text{-close to } hx_0 \text{ and } hgx_0, \text{ with } hx_0 \text{ coming earlier.}$$

The Myrberg limit set is the set of all Myrberg limit points of Γ .

When $\Gamma < \text{Isom}(X)$ is non-elementary, Yang proved in [Yan24, Corollary 4.17] that the Myrberg limit set of Γ is equal to the intersection of $(\varphi, C(\varphi))$ -guided limit sets for all contracting isometries $\varphi \in \Gamma$.

Considering Lemma 6.4, Theorem 7.5 implies that:

Corollary 7.8. *Let $\Gamma < \text{Isom}(X)$ be a non-elementary subgroup. Let μ be a Γ -invariant ergodic Radon measure on \mathcal{H} supported on $\Lambda_c(\Gamma) \times \mathbb{R}$. Then the measure μ is supported on*

$$\Lambda_{\text{Gui}}(\Gamma) \times \mathbb{R} \subset \mathcal{H}.$$

7.4. Neighborhoods in squeezed limit sets. We have seen that the squeezed limit sets are the genuine region for invariant ergodic measures. Let us now introduce a notion of neighborhoods of squeezed limit points. For $g, \varphi \in \text{Isom}(X)$, $C > 0$, and $n \in \mathbb{N}$, we set

$$U_C(g; \varphi, n) := \left\{ \xi \in \partial^h X : (x_0, g[x_0, \varphi^n x_0], \xi) \text{ is } C\text{-aligned} \right\}.$$

The interesting case is where φ is a squeezing isometry.

Lemma 7.9. *Let $\Gamma < \text{Isom}(X)$ be a non-elementary subgroup containing a squeezing isometry $\varphi \in \Gamma$, and let $C = C(\varphi) > 0$ be as in Lemma 5.9. Then*

$$\{U_C(g; \varphi, n) : g \in \Gamma, n \in \mathbb{N}\}$$

forms a basis for the topology of $\Lambda_{\varphi, C}(\Gamma) \subset \partial^h X$.

In other words, for each $\xi \in \Lambda_{\varphi, C}(\Gamma)$, for each open set $O \subset \partial^h X$ with $\xi \in O$ and for each $N \in \mathbb{N}$, there exist $g \in \Gamma$, $n > N$, and an open set $V \subset \partial^h X$ such that

$$\xi \in V \subset U_C(g; \varphi, n) \subset O.$$

Proof. Let $\gamma : \mathbb{R} \rightarrow X$ be the unique axis of φ . We fix $\xi \in \Lambda_{\varphi, C}(\Gamma)$, an open set $O \subset \partial^h X$ containing ξ , and $N \in \mathbb{N}$.

Let us first recall that $\partial^h X$ is given a compact-open topology. Hence, the set of the form

$$O_{R, \epsilon} := \{\zeta \in \partial^h X : |\xi(x) - \zeta(x)| < \epsilon \text{ for all } x \in \mathcal{N}_R(x_0)\} \quad \text{for } R, \epsilon > 0$$

forms a local basis for ξ . Fix $R, \epsilon > 0$ such that $O_{R, \epsilon} \subset O$. We may assume that $\epsilon < C$.

Let $L = L(0.01\epsilon) > 0$ be the constant as in Definition 5.5 for γ . Let $R' := \lceil \frac{R+100C}{\tau_\varphi} \rceil$ and $L' := \lceil \frac{2L+100C}{\tau_\varphi} \rceil$, and take $k \in \mathbb{N}$ such that

$$k > R' + L' + \lceil 100C/\tau_\varphi \rceil + N.$$

Let $\{z_i\}_{i \in \mathbb{N}} \subset X$ be a sequence converging to ξ . Since $\xi \in \Lambda_{\varphi, C}(\Gamma)$, there exists $h \in \Gamma$ such that $\xi \in U_C(h; \varphi, k)$, i.e.,

$$(x_0, h[x_0, \varphi^k x_0], z_i) \quad \text{is } C\text{-aligned for all large } i \in \mathbb{N}.$$

Since $\tau_\varphi k > 2C$, Lemma 5.9(4) tells us that

$$(7.6) \quad \begin{aligned} \pi_{h\gamma}(x_0) &\subset h\gamma((-\infty, 2C]) \quad \text{and} \\ \pi_{h\gamma}(z_i) &\subset h\gamma([\tau_\varphi k - 2C, +\infty)) \quad \text{for all large } i \in \mathbb{N}. \end{aligned}$$

By the $(1, 4C)$ -Lipschitzness of $\pi_{h\gamma}(\cdot)$ in Corollary 5.3(1), we have

$$(7.7) \quad \pi_{h\gamma}(x) \subset h\gamma((-\infty, 6C + R]) \quad \text{for all } x \in \mathcal{N}_R(x_0).$$

In view of Equation (7.6) and Lemma 5.9(3), $(x_0, h\varphi^{R'}[x_0, \varphi^{L'} x_0])$ is C -aligned. Similarly, $(h\varphi^{R'}[x_0, \varphi^{L'} x_0], z_i)$ is C -aligned eventually. Therefore,

$$\xi \in U_C(h\varphi^{R'}; \varphi, L').$$

Now let $\zeta \in U_C(h\varphi^{R'}; \varphi, L')$ and take a sequence $\{z'_i\}_{i \in \mathbb{N}} \subset X$ converging to ζ . Then by Lemma 5.9(4),

$$\pi_{h\gamma}(z'_i) \subset h\gamma([(R' + L')\tau_\varphi - 2C, +\infty)) \quad \text{for all large } i \in \mathbb{N}.$$

Combining this with Equation (7.6) and Equation (7.7), we can apply Lemma 5.6 and conclude that for each $x \in \mathcal{N}_R(x_0)$,

$$d(x, z_i) - d(x_0, z_i) =_{\epsilon/2} d(x, z'_i) - d(x_0, z'_i) \quad \text{for all large } i \in \mathbb{N}.$$

This implies that $|\xi(x) - \zeta(x)| < \epsilon$ for all $x \in \mathcal{N}_R(x_0)$, and therefore

$$\xi \in U_C(h\varphi^{R'}; \varphi, L') \subset O_{R,\epsilon} \subset O.$$

Now, set

$$V := \{\zeta \in \partial^h X : |\xi(x) - \zeta(x)| < \epsilon \text{ for all } x \in h\gamma([0, \tau_\varphi k])\}$$

which is an open neighborhood of ξ . We then show $V \subset U_C(h\varphi^{R'}; \varphi, L')$, which finishes the proof.

Let $\zeta \in V$ and $\{z'_i\}_{i \in \mathbb{N}} \subset X$ a sequence converging to ζ .

Claim. *We have*

$$(7.8) \quad \pi_{h\gamma}(z'_i) \subset h\gamma([\tau_\varphi k - 20C, +\infty)) \quad \text{for all large } i \in \mathbb{N}.$$

If not, then after passing to a subsequence,

$$d(z'_i, h\gamma(\tau_\varphi k - 2C)) - d(z'_i, h\gamma(\tau_\varphi k - 20C)) =_{8C} 18C \quad \text{for all } i \in \mathbb{N}$$

by Corollary 5.3(2). On the other hand, by Equation (7.6), it follows from Corollary 5.3(2) that after passing to a subsequence,

$$d(z_i, h\gamma(\tau_\varphi k - 20C)) - d(z_i, h\gamma(\tau_\varphi k - 2C)) =_{8C} 18C \quad \text{for all } i \in \mathbb{N}.$$

These imply that

$$\begin{aligned} \beta_\zeta(h\gamma(\tau_\varphi k - 2C), h\gamma(\tau_\varphi k - 20C)) &=_{8C} 18C \quad \text{and} \\ \beta_\xi(h\gamma(\tau_\varphi k - 20C), h\gamma(\tau_\varphi k - 2C)) &=_{8C} 18C. \end{aligned}$$

Equivalently,

$$\begin{aligned} \zeta(h\gamma(\tau_\varphi k - 2C)) - \zeta(h\gamma(\tau_\varphi k - 20C)) &=_{8C} 18C \quad \text{and} \\ \xi(h\gamma(\tau_\varphi k - 2C)) - \xi(h\gamma(\tau_\varphi k - 20C)) &=_{8C} -18C. \end{aligned}$$

This contradicts the fact that $|\xi(x) - \zeta(x)| < \epsilon$ for all $x \in h\gamma([0, \tau_\varphi k])$.

Hence, Equation (7.8) holds, and Lemma 5.9(3) tells us that

$$(x_0, h\varphi^{R'}[x_0, \varphi^{L'} x_0], \zeta) \quad \text{is } C\text{-aligned.}$$

This shows $\zeta \in U_C(h\varphi^{R'}; \varphi, L')$, and therefore $V \subset U_C(h\varphi^{R'}; \varphi, L')$ as desired. \square

7.5. Quasi-invariance under translations. For $a \in \mathbb{R}$, consider a map $T_a : \mathcal{H} \rightarrow \mathcal{H}$ given by $(\xi, t) \mapsto (\xi, t + a)$. For a Radon measure μ on \mathcal{H} , we consider its pullback measure $T_a^* \mu$: for each Borel subset $E \subset \mathcal{H}$,

$$T_a^* \mu(E) := \mu(T_a E).$$

For a contracting $g \in \text{Isom}(X)$, we simply write $T_g := T_{\tau_g}$. We show that invariant ergodic measures on \mathcal{H} are quasi-invariant under this translation.

Theorem 7.10. *Let $\Gamma < \text{Isom}(X)$ be a non-elementary subgroup containing a squeezing isometry. Let μ be a Γ -invariant ergodic Radon measure on \mathcal{H} supported on $\Lambda_c(\Gamma) \times \mathbb{R}$. Then for a squeezing isometry $\varphi \in \Gamma$, there exists $\lambda \geq 0$ such that*

$$\frac{dT_\varphi^* \mu}{d\mu} = e^\lambda \quad \text{a.e.}$$

Proof. Let $\varphi \in \Gamma$ be a squeezing isometry and let $C = C(\varphi) > 0$ be as in Lemma 5.9, with the choice of axis $\gamma : \mathbb{R} \rightarrow X$. Note that for every $n \in \mathbb{N}$, $\tau_{\varphi^n} = n \cdot \tau_\varphi$ and $C(\varphi^n) = C(\varphi)$. Since T_φ commutes with the Γ -action on \mathcal{H} , $T_{\varphi^{-n}}^* \mu$ is also Γ -invariant and ergodic. Hence, if $\frac{dT_{\varphi^n}^* (T_{\varphi^{-n}}^* \mu)}{dT_{\varphi^{-n}}^* \mu} = e^{\lambda_1}$ and $\frac{dT_{\varphi^{n+1}}^* (T_{\varphi^{-n}}^* \mu)}{dT_{\varphi^{-n}}^* \mu} = e^{\lambda_2}$ for some $\lambda_1, \lambda_2 \in \mathbb{R}$, then $\frac{dT_\varphi^* \mu}{d\mu} = e^{\lambda_2 - \lambda_1}$. Therefore, it suffices to consider the case that

$$\tau_\varphi > 100C.$$

We first aim to show that

$$(7.9) \quad (T_\varphi^* \mu)(E) \geq \mu(E)$$

for each Borel subset $E \subset \mathcal{H}$. By Corollary 7.8, μ is supported on $\Lambda_{\varphi, C}(\Gamma) \times \mathbb{R}$.

Step 1. First consider the case that $E = K \times I$ for a compact subset $K \subset \Lambda_{\varphi, C}(\Gamma)$ and a compact interval $I \subset \mathbb{R}$.

We fix some open subset $O \subset \partial^h X$ such that $K \subset O$ and $\epsilon > 0$. Let $L = L(0.001\epsilon) > 0$ be as in Definition 5.5 for γ . By Lemma 7.9, for each $\xi \in K$, there exist an element $g(\xi) \in \Gamma$ and $n(\xi) > (2L + 100C)/\tau_\varphi + 4$ such that

$$\xi \in U_C(g(\xi); \varphi, n(\xi)) \subset O.$$

Let $\mathcal{U} := \{U_C(g(\xi); \varphi, n(\xi)) : \xi \in K\}$, which is a countable collection of sets. For convenience, let us enumerate \mathcal{U} based on their distance from x_0 , i.e., let

$$\mathcal{U} = \{U_1, U_2, \dots\}$$

where $U_i := U_C(g_i; \varphi, n_i)$ for each $i \in \mathbb{N}$ so that

$$d(x_0, g_1 \varphi^{n_1} x_0) \leq d(x_0, g_2 \varphi^{n_2} x_0) \leq \dots$$

We will now define a subcollection

$$\mathcal{V} := \{U_{i(1)}, U_{i(2)}, \dots\} \subset \mathcal{U}$$

by inductively defining $i(1), i(2), \dots$. We let $i(1) = 1$. Now, having defined $i(1), \dots, i(N)$, define $i(N+1)$ as the smallest $j \in \mathbb{N}$ such that U_j is disjoint from $U_{i(1)} \cup \dots \cup U_{i(N)}$.

For each $l \in \mathbb{N}$, we set

$$(7.10) \quad C_l := U_{i(l)} \cup \bigcup \{U_k : k \geq i(l), U_k \cap U_{i(l)} \neq \emptyset\}.$$

Then $\{C_l : l \in \mathbb{N}\}$ is a covering of K contained in O . Indeed, for $k \geq 1$, if $k \neq i(l)$ for all $l \in \mathbb{N}$, then U_k intersects $U_{i(1)} \cup \dots \cup U_{i(l_0)}$ where $i(l_0)$ is the maximal index less than k .

Claim. For each $l \in \mathbb{N}$,

$$(7.11) \quad C_l \subset U_C(g_{i(l)}; \varphi, n_{i(l)} - 1).$$

To see this claim, let $k \geq i(l)$ be such that $U_k = U_C(g_k; \varphi, n_k)$ and $U_{i(l)}$ have a common element ξ . Then for every $z \in X$ close enough to ξ in \overline{X}^h ,

$$(7.12) \quad (x_0, g_{i(l)}[x_0, \varphi^{n_{i(l)}}x_0], z) \quad \text{is } C\text{-aligned.}$$

By Lemma 5.2, there exists $q \in [x_0, z]$ that is $3C$ -close to $g_{i(l)}\varphi^{n_{i(l)}}x_0$. Similarly, by the condition $\xi \in U_k$, $[x_0, z]$ contains a point p that is $3C$ -close to $g_k\varphi^{n_k}x_0$. Since $k \geq i(l)$, our enumerating convention tells us that

$$d(x_0, p) \geq d(x_0, g_k\varphi^{n_k}x_0) - 3C \geq d(x_0, g_{i(l)}\varphi^{n_{i(l)}}x_0) - 3C \geq d(x_0, q) - 6C.$$

In other words,

$$d(z, p) \leq d(z, q) + 6C.$$

If $d(z, p) \leq 10C$, then we have $d(z, g_k\varphi^{n_k}x_0) \leq 13C$. By the $(1, 4C)$ -Lipschitzness of $\pi_{g_{i(l)}[x_0, \varphi^{n_{i(l)}}x_0]}(\cdot)$ in Corollary 5.3(1), we have

$$\text{Diam } \pi_{g_{i(l)}[x_0, \varphi^{n_{i(l)}}x_0]}(\{z, g_k\varphi^{n_k}x_0\}) \leq 17C.$$

If $d(z, p) > 10C$, then we take a point $p^\dagger \in [z, p]$ such that $d(p, p^\dagger) = 10C$. Then $\text{Diam}[p^\dagger, z] = d(p, z) - 10C$, and hence

$$\begin{aligned} d(g_{i(l)}[x_0, \varphi^{n_{i(l)}}x_0], [p^\dagger, z]) &\geq d(g_{i(l)}[x_0, \varphi^{n_{i(l)}}x_0], z) - \text{Diam}[p^\dagger, z] \\ &\geq d(z, q) - 3C - d(z, p) + 10C \\ &\geq C. \end{aligned}$$

By the C -contracting property of $g_{i(l)}[x_0, \varphi^{n_{i(l)}}x_0]$, we have

$$\text{Diam } \pi_{g_{i(l)}[x_0, \varphi^{n_{i(l)}}x_0]}(\{z, p^\dagger\}) \leq C.$$

Since $d(p, g_k\varphi^{n_k}x_0) \leq 3C$, we have $d(p^\dagger, g_k\varphi^{n_k}x_0) \leq 13C$, and hence

$$\text{Diam } \pi_{g_{i(l)}[x_0, \varphi^{n_{i(l)}}x_0]}(\{z, g_k\varphi^{n_k}x_0\}) \leq 18C$$

by Corollary 5.3(1).

Hence, in any case, together with Equation (7.12), we have that

$$(7.13) \quad (x_0, g_{i(l)}[x_0, \varphi^{n_{i(l)}}x_0], g_k\varphi^{n_k}x_0) \quad \text{is } 19C\text{-aligned.}$$

Now let $\zeta \in U_k$ be arbitrary. Then for every $z' \in X$ close to ζ in \overline{X}^h ,

$$(x_0, g_k[x_0, \varphi^{n_k}x_0], z') \quad \text{is } C\text{-aligned}$$

and hence $[x_0, z']$ passes through the $3C$ -neighborhood of $g_k \varphi^{n_k} x_0$ as before. Hence, we have

$$\begin{aligned}
\text{Diam } \pi_{g_{i(l)}[x_0, \varphi^{n_{i(l)}} x_0]}([x_0, z']) &\geq d(g_{i(l)} x_0, g_{i(l)} \varphi^{n_{i(l)}} x_0) \\
&\quad - \text{Diam} \left(\pi_{g_{i(l)}[x_0, \varphi^{n_{i(l)}} x_0]}(x_0) \cup \{g_{i(l)} x_0\} \right) \\
&\quad - (d([x_0, z'], g_k \varphi^{n_k} x_0) + 4C) \\
&\quad - \text{Diam} \left(\pi_{g_{i(l)}[x_0, \varphi^{n_{i(l)}} x_0]}(g_k \varphi^{n_k} x_0) \cup \{g_{i(l)} \varphi^{n_{i(l)}} x_0\} \right) \\
&\geq 100C - C - (3C + 4C) - 19C \\
&\geq 70C
\end{aligned}$$

where we applied Corollary 5.3(1) in the first inequality, and Equation (7.12), Equation (7.13), and that $d([x_0, z'], g_k \varphi^{n_k} x_0) \leq 3C$ in the second.

We then apply Lemma 5.2 and obtain two points $u, v \in [x_0, z']$ such that

- (1) $[u, v]$ and $\pi_{g_{i(l)}[x_0, \varphi^{n_{i(l)}} x_0]}([x_0, z'])$ are within Hausdorff distance $4C$,
- (2) $\text{Diam} \left(\pi_{g_{i(l)}[x_0, \varphi^{n_{i(l)}} x_0]}([x_0, u]) \cup \{u\} \right) \leq 2C$,
- (3) $\text{Diam} \left(\pi_{g_{i(l)}[x_0, \varphi^{n_{i(l)}} x_0]}([v, z']) \cup \{v\} \right) \leq 2C$, and
- (4) for each $u' \in \pi_{g_{i(l)}[x_0, \varphi^{n_{i(l)}} x_0]}(x_0)$ and $v' \in \pi_{g_{i(l)}[x_0, \varphi^{n_{i(l)}} x_0]}(z')$, $[u', v']$ and $[u, v]$ are within Hausdorff distance $10C$.

Since $d([x_0, z'], g_k \varphi^{n_k} x_0) \leq 3C$, it follows from Equation (7.13) and Corollary 5.3(1) that there exists $w \in [x_0, z']$ such that

$$(7.14) \quad \text{Diam} \left(\pi_{g_{i(l)}[x_0, \varphi^{n_{i(l)}} x_0]}(w) \cup \{g_{i(l)} \varphi^{n_{i(l)}} x_0\} \right) \leq 26C.$$

By the condition (2) above, Equation (7.13), and $d(x_0, \varphi^{n_{i(l)}} x_0) > 100C$, we must have $w \notin [x_0, u]$, and hence $w \in [v, z']$ or $w \in [u, v]$.

- If $w \in [v, z']$, then it follows from (3) above that

$$\text{Diam} \left(\pi_{g_{i(l)}[x_0, \varphi^{n_{i(l)}} x_0]}(z') \cup \{g_{i(l)} \varphi^{n_{i(l)}} x_0\} \right) \leq 28C.$$

- If $w \in [u, v]$, then it follows from (4) above that for each pair of points $u' \in \pi_{g_{i(l)}[x_0, \varphi^{n_{i(l)}} x_0]}(x_0)$ and $v' \in \pi_{g_{i(l)}[x_0, \varphi^{n_{i(l)}} x_0]}(z')$, there exists $w' \in [u', v']$ such that $d(w, w') \leq 10C$. We then have

$$\text{Diam} \left(\pi_{g_{i(l)}[x_0, \varphi^{n_{i(l)}} x_0]}(w) \cup \{w'\} \right) \leq 20C.$$

Together with Equation (7.14), $\text{Diam}\{w', g_{i(l)} \varphi^{n_{i(l)}} x_0\} \leq 46C$. Since v' is between w' and $g_{i(l)} \varphi^{n_{i(l)}} x_0$, and $v' \in \pi_{g_{i(l)}[x_0, \varphi^{n_{i(l)}} x_0]}(z')$ is arbitrary, we have

$$\text{Diam} \left(\pi_{g_{i(l)}[x_0, \varphi^{n_{i(l)}} x_0]}(z') \cup \{g_{i(l)} \varphi^{n_{i(l)}} x_0\} \right) \leq 46C.$$

Therefore, $(g_{i(l)}[x_0, \varphi^{n_{i(l)}} x_0], z')$ is $46C$ -aligned.

By Lemma 5.9(4), we have

$$(7.15) \quad \begin{aligned} \pi_{g_{i(l)}\gamma}(z') &\subset g_{i(l)}\gamma([\tau_\varphi n_{i(l)} - 47C, +\infty)) \\ &\subset g_{i(l)}\gamma([\tau_\varphi(n_{i(l)} - 1) + 3C, +\infty)). \end{aligned}$$

By Lemma 5.9(3), this implies that $(g_{i(l)}[x_0, \varphi^{n_{i(l)}-1}x_0], z')$ is C -aligned. This is the case for every z' close to $\zeta \in U_k$, so we conclude

$$\zeta \in U_C(g_{i(l)}; \varphi, n_{i(l)} - 1).$$

The claim is now established.

For each $l \in \mathbb{N}$ we now define a map $F_l : C_l \times I \rightarrow \mathcal{H}$. For $g = g_{i(l)}$ we let

$$(7.16) \quad F_l : \mathfrak{X} \mapsto g\varphi g^{-1}\mathfrak{X}.$$

We have $\mu(F_l(C_l \times I)) = \mu(C_l \times I)$ as μ is Γ -invariant.

Claim. *We have*

$$(7.17) \quad F_l(C_l \times I) \subset U_{i(l)} \times (\epsilon\text{-neighborhood of } I + \tau_\varphi).$$

To see this, we simply write $g = g_{i(l)}$ and $n = n_{i(l)} - 1$. We then fix $\mathfrak{X} = (\xi, t) \in C_l \times I$. Note that

$$F_l(\mathfrak{X}) = (g\varphi g^{-1}\xi, t + \beta_\xi(g\varphi^{-1}g^{-1}x_0, x_0)).$$

Let $\{z_i\}_{i \in \mathbb{N}} \subset X$ be a sequence converging to ξ .

We first show that $g\varphi g^{-1}\xi \in U_{i(l)}$, which follows once we show that

$$(x_0, g[x_0, \varphi^{n+1}x_0], g\varphi g^{-1}z_i) \text{ is } C\text{-aligned for all large } i \in \mathbb{N},$$

Since $U_{i(l)} \neq \emptyset$, we already have that $(x_0, g[x_0, \varphi^{n+1}x_0])$ is C -aligned. Now suppose to the contrary that $(g[x_0, \varphi^{n+1}x_0], g\varphi g^{-1}z_i)$ is not C -aligned for large $i \in \mathbb{N}$. By Lemma 5.9(3), we have

$$\pi_{g\gamma}(z_i) \subset g\gamma((-\infty, n\tau_\varphi]).$$

This contradicts Equation (7.15). Therefore, $g\varphi g^{-1}\xi \in U_{i(l)}$.

For the second component, it suffices to show

$$(7.18) \quad |\beta_\xi(g\varphi^{-1}g^{-1}x_0, x_0) - \tau_\varphi| < \epsilon.$$

Note that

$$\beta_\xi(g\varphi^{-1}g^{-1}x_0, x_0) = \lim_{i \rightarrow +\infty} d(g\varphi^{-1}g^{-1}x_0, z_i) - d(x_0, z_i).$$

By Equation (7.11),

$$(x_0, g[x_0, \varphi^n x_0], z_i) \text{ is } C\text{-aligned for all large } i \in \mathbb{N}.$$

Hence, for all large $i \in \mathbb{N}$, it follows from Lemma 5.9(4) that

$$(7.19) \quad \pi_{g\gamma}(x_0) \subset g\gamma((-\infty, 2C]) \quad \text{and} \quad \pi_{g\gamma}(z_i) \subset g\gamma([n\tau_\varphi - 2C, +\infty)).$$

Since $n\tau_\varphi - 4C > 2L$ and $g\gamma$ is squeezing (Definition 5.5), there exists $p \in [x_0, z_i]$ such that

$$d(p, g\gamma(n\tau_\varphi/2)) \leq 0.001\epsilon.$$

Meanwhile, note that $(g\varphi^{-1}g^{-1}x_0, g[x_0, \varphi^n x_0])$ is also C -aligned; otherwise, we have $\pi_{g\gamma}(g\varphi^{-1}g^{-1}x_0) \subset g\gamma([0, +\infty))$ by Lemma 5.9(3), and therefore $\pi_{g\gamma}(x_0) \subset g\gamma([\tau_\varphi, +\infty))$ which contradicts Equation (7.19). Hence, it follows from Lemma 5.9(4) that

$$\pi_{g\gamma}(g\varphi^{-1}g^{-1}x_0) \subset g\gamma((-\infty, 2C]).$$

Together with Equation (7.19) and $n\tau_\varphi - 4C > 2L + 2\tau_\varphi$, the squeezing property of $g\gamma$ implies that there exist $q_1, q_2 \in [g\varphi g^{-1}x_0, z_i]$, with q_1 coming earlier than q_2 , such that

$$d(q_1, g\gamma(n\tau_\varphi/2 - \tau_\varphi)), d(q_2, g\gamma(n\tau_\varphi/2)) < 0.001\epsilon.$$

Now we have

$$\begin{aligned} d(g\varphi^{-1}g^{-1}x_0, z_i) - d(x_0, z_i) &= (d(g\varphi^{-1}g^{-1}x_0, q_1) + d(q_1, q_2) + d(q_2, z_i)) \\ &\quad - (d(x_0, p) + d(p, z_i)) \\ &= 0.006\epsilon d(g\varphi^{-1}g^{-1}x_0, g\gamma(n\tau_\varphi/2 - \tau_\varphi)) \\ &\quad + d(g\gamma(n\tau_\varphi/2 - \tau_\varphi), g\gamma(n\tau_\varphi/2)) \\ &\quad + d(g\gamma(n\tau_\varphi/2), z_i) \\ &\quad - d(x_0, g\gamma(n\tau_\varphi/2)) - d(g\gamma(n\tau_\varphi/2), z_i) \\ &= d(g\gamma(n\tau_\varphi/2 - \tau_\varphi), g\gamma(n\tau_\varphi/2)) = \tau_\varphi. \end{aligned}$$

Taking the limit $i \rightarrow +\infty$, Equation (7.18) follows. This completes the proof of the claim.

Now by the above claim and disjointness of $U_{i(l)}$'s, we have

$$\begin{aligned} \mu(O \times (\epsilon\text{-neighborhood of } I + \tau_\varphi)) &\geq \mu\left(\bigcup_l F_l(C_l \times I)\right) \\ &= \sum_l \mu(F_l(C_l \times I)) \\ &= \sum_l \mu(C_l \times I) \\ &\geq \mu(K \times I). \end{aligned}$$

Note that $\mu(O \times (\epsilon\text{-neighborhood of } I + \tau_\varphi)) < +\infty$ since μ is Radon. Since $\epsilon > 0$ and an open set $O \supset K$ are arbitrary, we have

$$(T_\varphi^*\mu)(K \times I) = \mu(K \times (I + \tau_\varphi)) \geq \mu(K \times I).$$

Step 2. Consider the case that $E = A \times B$ for Borel $A \subset \partial^h X$ and an interval $B \subset \mathbb{R}$. Since μ is supported on $\Lambda_{\varphi, C}(\Gamma) \times \mathbb{R}$, we may assume that $A \subset \Lambda_{\varphi, C}(\Gamma)$. By the inner regularity of μ and $T_\varphi^*\mu$, there exist compact subsets $E_1, E_2 \subset E$ such that

$$|\mu(E) - \mu(E_1)| < \epsilon \quad \text{and} \quad |(T_\varphi^*\mu)(E) - (T_\varphi^*\mu)(E_2)| < \epsilon.$$

Considering projections of $E_1 \cup E_2$ to A and B , we obtain compact subsets $K \subset A$ and $I \subset B$ so that

$$|\mu(E) - \mu(K \times I)| < \epsilon \quad \text{and} \quad |(T_\varphi^* \mu)(E) - (T_\varphi^* \mu)(K \times I)| < \epsilon.$$

By taking the convex hull of I (recall that B is an interval), we may assume that I is a compact interval. Applying Step 1 to $K \times I$, we have

$$(T_\varphi^* \mu)(E) \geq \mu(E) - 2\epsilon.$$

Since $\epsilon > 0$ is arbitrary, $(T_\varphi^* \mu)(E) \geq \mu(E)$ follows.

Step 3. When $E \subset \mathcal{H}$ is a finite union of open sets of the form $O_1 \times O_2$ for open sets $O_1 \subset \partial^h X$ and open intervals $O_2 \subset \mathbb{R}$, E is a disjoint union of finitely many Borel subsets of the form $A \times B$, where $A \subset \partial^h X$ is Borel and $B \subset \mathbb{R}$ is an interval. Hence, $(T_\varphi^* \mu)(E) \geq \mu(E)$ follows from Step 2.

Step 4. When $E \subset \mathcal{H}$ is an open set, E is a countable union of open sets of the form $O_1 \times O_2$ for open sets $O_1 \subset \partial^h X$ and open intervals $O_2 \subset \mathbb{R}$. Hence, $(T_\varphi^* \mu)(E) \geq \mu(E)$ follows from Step 3.

Step 5. Finally, suppose that $E \subset \mathcal{H}$ is a Borel subset. Then it follows from Step 4 and the outer regularity of μ and $T_\varphi^* \mu$ that

$$(T_\varphi^* \mu)(E) \geq \mu(E).$$

Now we have shown Equation (7.9). Hence, we can consider the Radon–Nikodym derivative $\frac{d\mu}{dT_\varphi^* \mu}$. Since both μ and $T_\varphi^* \mu$ are Γ -invariant, $\frac{d\mu}{dT_\varphi^* \mu}$ is Γ -invariant as well. By Γ -ergodicity of $T_\varphi^* \mu$, $\frac{d\mu}{dT_\varphi^* \mu}$ is constant $T_\varphi^* \mu$ -a.e., which must be positive. Hence, there exists $\lambda \in \mathbb{R}$ such that $\frac{dT_\varphi^* \mu}{d\mu} = e^\lambda$ μ -a.e., and moreover, $\lambda \geq 0$ by Equation (7.9). This completes the proof. \square

7.6. Proof of the rigidity. Let us now prove Theorem 7.4.

Proof of Theorem 7.4. By ergodic decomposition, it suffices to consider a Γ -invariant ergodic Radon measure μ on \mathcal{H} supported on $\Lambda_c(\Gamma) \times \mathbb{R}$.

Let

$$A := \left\{ a \in \mathbb{R} : \exists \lambda(a) \in \mathbb{R} \text{ such that } \frac{dT_a^* \mu}{d\mu} = e^{\lambda(a)} \text{ a.e.} \right\}.$$

It is straightforward that A is an additive subgroup of \mathbb{R} and $\lambda : A \rightarrow \mathbb{R}$ is an additive homomorphism. Moreover, by Theorem 7.10,

$$\text{Spec}_{sq}(\Gamma) \subset A.$$

Hence, it follows from non-arithmeticity of $\text{Spec}_{sq}(\Gamma)$ that $A \subset \mathbb{R}$ is dense.

Claim. *There exists $\delta \geq 0$ such that*

$$\lambda(a) = \delta \cdot a \quad \text{for all } a \in A.$$

To see this claim, choose a nonzero $a \in A$ and set $\delta := \lambda(a)/a$. By Theorem 7.10, we can choose $a \in A$ so that $\delta \geq 0$. It suffices to show that for every nonzero $a' \in A$, $\lambda(a')/a' = \delta$ as well. There are two cases.

- (1) If a and a' are commensurable, i.e., $ma = na'$ for some $m, n \in \mathbb{Z}$, then the conclusion follows from

$$m\lambda(a) = \lambda(ma) = \lambda(na') = n\lambda(a').$$

- (2) If a and a' are not commensurable, then suppose to the contrary that $\delta' := \lambda(a')/a'$ is distinct from δ .

Let $R > 0$ be large enough so that $O := \partial^h X \times (-R, R)$ satisfies $0 < \mu(O) < +\infty$. Let $K \subset O$ be an arbitrary compact subset. Then there exists $\epsilon > 0$ such that $K \subset \partial^h X \times (-R - \epsilon, R + \epsilon)$.

Since a and a' are not commensurable and $\delta \neq \delta'$, there exist $N, M \in \mathbb{Z}$ such that $N > \frac{\epsilon\delta+1}{|a'|\delta-\delta'}$ and $|Ma - Na'| < \epsilon$. Then setting $s := Ma - Na' \in A$, we have

$$\begin{aligned} |\lambda(s)| &= |M\lambda(a) - N\lambda(a')| \\ &= |(Ma - Na')\delta + (\delta - \delta')Na'| \\ &\geq |\delta - \delta'| |a'| N - \epsilon\delta > 1. \end{aligned}$$

Replacing s with $-s$ if necessary, we may assume that $\lambda(s) > 1$. Then we have

$$\mu(O) \geq \mu(T_s K) = (T_s^* \mu)(K) = e^{\lambda(s)} \mu(K) > e\mu(K).$$

Since $K \subset O$ is arbitrary, we have $\mu(O) \geq e\mu(O)$, which is absurd.

Therefore, the claim follows.

Now consider an arbitrary $a \in \mathbb{R}$. Since $A \subset \mathbb{R}$ is dense, there exists a sequence $\{a_i\}_{i \in \mathbb{N}} \subset A$ converging to a . Let $U \subset \mathcal{H}$ be an open subset and $K \subset U$ a compact subset. Then for all large $i \in \mathbb{N}$, $T_{a_i} K \subset T_a U$, and hence

$$\mu(T_a U) \geq \mu(T_{a_i} K) = e^{\lambda(a_i)} \mu(K) = e^{\delta a_i} \mu(K).$$

Taking the limit $i \rightarrow +\infty$, we have $\mu(T_a U) \geq e^{\delta a} \mu(K)$. Since $K \subset U$ is arbitrary, this implies $\mu(T_a U) \geq e^{\delta a} \mu(U)$. By the same argument, we also have $\mu(U) \geq e^{-\delta a} \mu(T_a U)$. Hence, we have $(T_a^* \mu)(U) = e^{\delta a} \mu(U)$. Since this holds for any open subset $U \subset \mathcal{H}$, we have

$$T_a^* \mu = e^{\delta a} \cdot \mu.$$

This implies that there exists a finite Borel measure ν_0 on $\partial^h X$ so that μ is decomposed on $\mathcal{H} = \partial^h X \times \mathbb{R}$ as follows:

$$d\mu(\xi, t) = e^{\delta t} \cdot d\nu_0(\xi) dt.$$

By the Γ -invariance of μ , it is easy to see that for each $g \in \Gamma$,

$$\frac{dg_* \nu_0}{d\nu_0}(\xi) = e^{-\delta \beta_\xi(gx_0, x_0)} \quad \text{for } \nu_0\text{-a.e. } \xi \in \partial^h X.$$

Then for $x \in X$, define the measure ν_x on $\partial^h X$ by setting

$$d\nu_x(\xi) := \frac{e^{-\delta \beta_\xi(x, x_0)}}{\nu_0(\partial^h X)} d\nu_0(\xi).$$

This is well-defined, and moreover the family $\{\nu_x\}_{x \in X}$ is a δ -dimensional conformal density of Γ . Since $\{\nu_x\}_{x \in X}$ is supported on $\Lambda_c(\Gamma)$, $\delta = \delta_\Gamma$ and Γ is of divergence type as a result of the generalized Hopf–Tsuji–Sullivan dichotomy ([Cou24, Corollary 4.25], [Yan24, Theorem 1.14]). Therefore,

$$\mu = \frac{1}{\nu_0(\partial^h X)} \cdot \mu_\Gamma,$$

which completes the proof. \square

8. EXISTENCE OF ERGODIC INVARIANT RADON MEASURES

We continue with the setting of Section 7. In this section, we prove the ergodicity of the invariant Radon measure defined in Definition 7.1. This was stated as Theorem 1.9 in the introduction.

Theorem 8.1. *Let $\Gamma < \text{Isom}(X)$ be a non-elementary subgroup with non-arithmetic squeezing spectrum. If Γ is of divergence type, then*

the Γ -action on $(\mathcal{H}, \mu_\Gamma)$ is ergodic.

Moreover, μ_Γ is supported on $\Lambda_c(\Gamma) \times \mathbb{R} \subset \mathcal{H}$. Furthermore, up to scaling, μ_Γ is the unique Γ -invariant Radon measure on \mathcal{H} that is supported on $\Lambda_c(\Gamma) \times \mathbb{R}$.

Note that μ_Γ being supported on $\Lambda_c(\Gamma) \times \mathbb{R}$ is due to Coulon [Cou24] and Yang [Yan24] (Proposition 6.6). In addition, the unique ergodicity follows from Theorem 7.4, once we show the ergodicity. Hence, it suffices to show that μ_Γ is Γ -ergodic. This is a special case of the following, together with Proposition 6.9:

Theorem 8.2. *Let $\Gamma < \text{Isom}(X)$ be a non-elementary subgroup of divergence type. Let $\Gamma_0 \triangleleft \Gamma$ be a normal subgroup such that*

- $\text{Spec}_{sq}(\Gamma_0)$ is non-arithmetic and
- the Γ_0 -action on $\partial^h X$ is ergodic with respect to the δ_Γ -dimensional conformal density of Γ .

Then,

the Γ_0 -action on $(\mathcal{H}, \mu_\Gamma)$ is ergodic.

To prove the ergodicity, we consider the notion of essential subgroups, which was introduced by Schmidt [Sch77] and studied further by Roblin [Rob03]. For a conformal density $\nu = \{\nu_x\}_{x \in X}$, all measures in the family ν are in the same measure class. Hence, when discussing positivity of a Borel subset, we simply use the notation ν .

Definition 8.3. Let $\Gamma < \text{Isom}(X)$ and let ν be a conformal density of Γ . We define the subset $\mathbf{E}_\nu(\Gamma) \subset \mathbb{R}$ as follows: $a \in \mathbf{E}_\nu(\Gamma)$ if for each $\epsilon > 0$ and a Borel subset $E \subset \partial^h X$ with $\nu(E) > 0$, there exists $g \in \Gamma$ such that

$$\nu \left(E \cap g\varphi g^{-1}E \cap \{ \xi \in \partial^h X : |\beta_\xi(x_0, g\varphi g^{-1}x_0) - a| < \epsilon \} \right) > 0.$$

It is easy to see that $E_\nu(\Gamma)$ is a closed subgroup of \mathbb{R} . We call $E_\nu(\Gamma)$ the *essential subgroup* for Γ and ν .

The size of the essential subgroup serves as a criterion for the ergodicity of actions on \mathcal{H} . The following was proved in [Sch77] for abstract measurable dynamical systems. A more direct proof for a particular case of CAT(-1) spaces was given in [Rob03]. The same proof works in our setting as well.

Proposition 8.4 ([Sch77], [Rob03, Proposition 2.1]). *Let $\Gamma < \text{Isom}(X)$ and let ν be a conformal density of Γ . Then the Γ -action on (\mathcal{H}, μ_ν) is ergodic if and only if the Γ -action on $(\partial^h X, \nu)$ is ergodic and $E_\nu(\Gamma) = \mathbb{R}$.*

From this perspective, the following is the main step in the proof of Theorem 8.2, which was proved by Roblin [Rob03] when X is CAT(-1). The CAT(-1) property was crucially used in [Rob03] to have a nice visual metric on the boundary that guarantees a Vitali covering relation of a specific form. In our setting, the lack of Gromov hyperbolicity is an obstacle to considering such a visual metric, and hence we present another proof that does not require metrizing the boundary.

Lemma 8.5. *Let $\Gamma < \text{Isom}(X)$ be a non-elementary subgroup of divergence type and ν a δ_Γ -dimensional conformal density of Γ . Let $\varphi \in \Gamma$ be a squeezing isometry. Then for each $\epsilon > 0$ and a Borel subset $E \subset \partial^h X$ with $\nu(E) > 0$, there exists $g \in \Gamma$ such that*

$$\nu\left(E \cap g\varphi g^{-1}E \cap \{\xi \in \partial^h X : |\beta_\xi(x_0, g\varphi g^{-1}x_0) - \tau_\varphi| < \epsilon\}\right) > 0.$$

In particular, if $\Gamma_0 \triangleleft \Gamma$ is a normal subgroup, then

$$\text{Spec}_{sq}(\Gamma_0) \subset E_\nu(\Gamma_0).$$

Proof. Let $C = C(\varphi) > 0$ be as in Lemma 5.9. By Proposition 6.6, ν is supported on $\Lambda_{\varphi, C}(\Gamma)$. Together with the inner regularity of ν , it suffices to consider compact subsets of $\Lambda_{\varphi, C}(\Gamma)$.

Let $K \subset \Lambda_{\varphi, C}(\Gamma)$ be a compact subset and let ϵ be a positive number smaller than τ_φ . Suppose that for each $g \in \Gamma$,

$$\nu\left(K \cap g\varphi g^{-1}K \cap \{\xi \in \partial^h X : |\beta_\xi(x_0, g\varphi g^{-1}x_0) - \tau_\varphi| < \epsilon\}\right) = 0.$$

Our goal is to show $\nu(K) = 0$.

To do this, let $O \subset \partial^h X$ be an open subset containing K . We will then construct a Borel subset $E(O) \subset O$ such that

$$(8.1) \quad \nu(K \cap E(O)) = 0 \quad \text{and} \quad \nu(E(O)) \geq e^{-2\delta_\Gamma \tau_\varphi} \cdot \nu(K).$$

Before we proceed, let us see how this leads to our goal. Suppose that we have constructed $E(O)$. By $\nu(E(O) \setminus K) \geq e^{-2\delta_\Gamma \tau_\varphi} \cdot \nu(K)$ and the inner regularity, there exists a compact subset $K(O) \subset E(O) \setminus K$ such that

$$\nu(K(O)) \geq 0.5e^{-2\delta_\Gamma \tau_\varphi} \cdot \nu(K).$$

In particular, $K(O)$ is disjoint from both K and $\partial^h X \setminus O$. Now we inductively define

$$K_1 := K \left(\partial^h X \right) \quad \text{and} \quad K_i := K \left(\partial^h X \setminus (K_1 \cup \dots \cup K_{i-1}) \right) \quad \text{for } i \in \mathbb{N}.$$

Then K_i 's are pairwise disjoint subsets with $\nu(K_i) \geq e^{-2\delta_\Gamma \tau_\varphi} \cdot \nu(K)$ for all $i \in \mathbb{N}$. Since ν is finite, we must have $\nu(K) = 0$.

Hence, it remains to find a set $E(O) \subset O$ satisfying Equation (8.1). We revisit the proof of Theorem 7.10, considering the cover \mathcal{U} and its subcollection \mathcal{V} for K and O . Especially, for $l \in \mathbb{N}$, we consider $C_l \subset O$ in Equation (7.10) and the restriction $F_l = g_{i(l)} \varphi g_{i(l)}^{-1} : C_l \rightarrow \partial^h X$ of the map in Equation (7.16), where $g_{i(l)} \in \Gamma$ is given there.

We now see that

$$E(O) := \bigcup_{l \in \mathbb{N}} F_l(C_l \cap K)$$

satisfies Equation (8.1). First, note that $\bigcup_{l \in \mathbb{N}} F_l(C_l \cap K) \subset \bigcup_{l \in \mathbb{N}} C_l \subset O$ by Equation (7.17).

It follows from (7.18) that for each $l \in \mathbb{N}$,

$$(8.2) \quad F_l(C_l) \subset \left\{ \xi \in \partial^h X : |\beta_\xi(x_0, g_{i(l)} \varphi g_{i(l)}^{-1} x_0) - \tau_\varphi| < \epsilon \right\}.$$

We then have

$$\begin{aligned} & K \cap F_l(C_l \cap K) \\ & \subset K \cap g_{i(l)} \varphi g_{i(l)}^{-1} K \cap \left\{ \xi \in \partial^h X : |\beta_\xi(x_0, g_{i(l)} \varphi g_{i(l)}^{-1} x_0) - \tau_\varphi| < \epsilon \right\} \end{aligned}$$

and hence our hypothesis on K implies $\nu(K \cap F_l(C_l \cap K)) = 0$. Therefore,

$$\nu \left(K \cap \bigcup_{l \in \mathbb{N}} F_l(C_l \cap K) \right) = 0,$$

showing the first claim in Equation (8.1).

Now it remains to estimate $\nu \left(\bigcup_{l \in \mathbb{N}} F_l(C_l \cap K) \right)$. By Equation (8.2) and $\epsilon < \tau_\varphi$, we have for each $l \in \mathbb{N}$ that

$$\nu(F_l(C_l \cap K)) = \int_{C_l \cap K} e^{-\delta_\Gamma \beta_\xi(g_{i(l)} \varphi^{-1} g_{i(l)}^{-1} x_0, x_0)} d\nu(\xi) \geq e^{-2\delta_\Gamma \tau_\varphi} \nu(C_l \cap K).$$

By Equation (7.17), we also have that $F_l(C_l \cap K)$'s are pairwise disjoint. Therefore,

$$\begin{aligned} \nu \left(\bigcup_{l \in \mathbb{N}} F_l(C_l \cap K) \right) &= \sum_{l \in \mathbb{N}} \nu(F_l(C_l \cap K)) \\ &\geq e^{-2\delta_\Gamma \tau_\varphi} \sum_{l \in \mathbb{N}} \nu(C_l \cap K) \geq e^{-2\delta_\Gamma \tau_\varphi} \cdot \nu \left(\bigcup_{l \in \mathbb{N}} (C_l \cap K) \right). \end{aligned}$$

Since $K \subset \bigcup_{l \in \mathbb{N}} C_l$ as in Equation (7.10), this implies

$$\nu \left(\bigcup_{l \in \mathbb{N}} F_l(C_l \cap K) \right) \geq e^{-2\delta_\Gamma \tau_\varphi} \cdot \nu(K).$$

Therefore, the second claim in Equation (8.1) follows. \square

Proof of Theorem 8.2. Let ν be the δ_Γ -dimensional conformal density of Γ . By Lemma 8.5, $\text{Spec}_{sq}(\Gamma_0) \subset \mathbf{E}_\nu(\Gamma_0)$. Since $\text{Spec}_{sq}(\Gamma_0)$ is non-arithmetic and $\mathbf{E}_\nu(\Gamma_0)$ is a closed subgroup of \mathbb{R} , we have $\mathbf{E}_\nu(\Gamma_0) = \mathbb{R}$. By the assumption that the Γ_0 -action on (\mathcal{H}, ν) is ergodic, it follows from Proposition 8.4 that the Γ_0 -action on (\mathcal{H}, μ_ν) is ergodic. By definition, $\mu_\nu = \mu_\Gamma$, and hence this completes the proof. \square

9. SUBGROUPS OF MAPPING CLASS GROUPS AND MEASURE CLASSIFICATION

In the rest of this paper, let S be a connected orientable surface of genus g and with p punctures with $3g - 3 + p \geq 1$. We apply results in previous sections to the case that X is the Teichmüller space $\mathcal{T} = \mathcal{T}(S)$. In this section, we deduce Theorem 1.2, Theorem 1.3, and Theorem 1.6.

9.1. Non-elementary subgroups of the mapping class group. For $\Gamma < \text{Mod}(S)$, Γ is non-elementary if and only if Γ contains two pseudo-Anosov mapping classes with disjoint sets of fixed points in the Thurston boundary \mathcal{PML} . Since the axis of a pseudo-Anosov mapping class is squeezing as in Proposition 4.1, a non-elementary subgroup $\Gamma < \text{Mod}(S)$ indeed satisfies the conditions of Definition 5.10 for its action on $\mathcal{T}(S)$.

In fact, it follows from the Nielsen–Thurston classification that the class of pseudo-Anosov mapping classes is precisely the class of squeezing isometries in $\text{Mod}(S)$. Hence, the following gives the *non-arithmeticity* of squeezing spectra:

Theorem 9.1 (Non-arithmeticity, [CK26b, Theorem 1.1]). *Let $\Gamma < \text{Mod}(S)$ be a non-elementary subgroup. Then*

$\text{Spec}_{pA}(\Gamma) := \{d_{\mathcal{T}}\text{-translation length of } \varphi : \varphi \in \Gamma, \varphi \text{ is pseudo-Anosov}\}$
generates a dense additive subgroup of \mathbb{R} .

The notion of divergence-type is defined similarly. Fixing a basepoint $x_0 \in \mathcal{T}$, the *Poincaré series* of a non-elementary subgroup $\Gamma < \text{Mod}(S)$ is

$$\mathcal{P}_\Gamma(s) := \sum_{g \in \Gamma} e^{-s d_{\mathcal{T}}(x_0, g x_0)}.$$

Since $\text{Mod}(S)$ has exponentially bounded growth [KM96, Theorem 1.3.2] and contains a free subgroup [McC85, Theorem B], there exists $0 < \delta_\Gamma < +\infty$ such that $\mathcal{P}_\Gamma(s)$ diverges for $s < \delta_\Gamma$ and converges for $s > \delta_\Gamma$.

We call δ_Γ the *critical exponent* of Γ . If $\mathcal{P}_\Gamma(\delta_\Gamma) = +\infty$, we say that Γ is of *divergence type*. Otherwise, Γ is of *convergence type*.

9.2. Ergodicity and Unique ergodicity. We first deduce Theorem 1.2 and Theorem 1.3 from our theory in Section 5, Section 6, Section 7, and Section 8, by setting $(X, d) = (\mathcal{T}, d_{\mathcal{T}})$. We continue to fix a basepoint $x_0 \in \mathcal{T}$.

Given a non-elementary subgroup $\Gamma < \text{Mod}(S)$, recall the notion of *recurrence locus* for Γ from the introduction:

$$\mathcal{R}_{\Gamma} := \left\{ \xi \in \mathcal{ML} : \begin{array}{l} \text{Teichmüller geodesic ray given by } q_{\xi} \in \mathcal{Q}(S, x_0) \\ \text{recurs to a compact subset in } \Gamma \backslash \mathcal{T} \end{array} \right\}$$

where $q_{\xi} \in \mathcal{Q}(S, x_0)$ is the holomorphic quadratic differential corresponding to $\xi \in \mathcal{ML}$, given by the Hubbard–Masur theorem.

In terms of the Hubbard–Masur coordinates we introduced in Section 3.2, it follows from the Masur criterion [Mas92, Theorem 1.1] that

$$\text{HM}(\mathcal{R}_{\Gamma}) \subset \mathcal{UE} \times \mathbb{R}.$$

Recall that \mathcal{UE} sits in both \mathcal{PML} and $\partial^{GM}\mathcal{T}$, with the same topology [Miy13, Theorem 2]. Hence, $\mathcal{UE} \times \mathbb{R}$ sits in both $\mathcal{PML} \times \mathbb{R} \simeq \mathcal{ML}$ via the Hubbard–Masur coordinates and $\partial^{GM}\mathcal{T} \times \mathbb{R} \simeq \partial^h\mathcal{T} \times \mathbb{R}$ via the coordinates in Section 3.3. That means, the identification

$$\iota : \mathcal{UE} \times \mathbb{R} \subset \mathcal{ML} \rightarrow \mathcal{UE} \times \mathbb{R} \subset \partial^h\mathcal{T} \times \mathbb{R} = \mathcal{H}$$

is a homeomorphism. Hence, a Borel measure μ on \mathcal{ML} supported on $\mathcal{UE} \times \mathbb{R}$ can be viewed as Borel measures on $\partial^h\mathcal{T} \times \mathbb{R}$ supported on $\mathcal{UE} \times \mathbb{R}$. Note that ι preserves the \mathbb{R} -coordinate. Combining these observations, we have that

$$(9.1) \quad (\iota \circ \text{HM})(\mathcal{R}_{\Gamma}) = \Lambda_c(\Gamma) \times \mathbb{R} \subset \mathcal{H}.$$

Furthermore, if μ is locally finite on \mathcal{ML} , then $\iota_*\mu$ is also locally finite on $\partial^h\mathcal{T} \times \mathbb{R}$. Indeed, for a compact subset $K \subset \partial^h\mathcal{T} \times \mathbb{R}$, the set $\{t : (\xi, t) \in K \cap (\mathcal{UE} \times \mathbb{R})\}$ is bounded. This implies that the $\iota^{-1}(K \cap (\mathcal{UE} \times \mathbb{R}))$ is precompact, as it sits in $\mathcal{PML} \times [-R, R]$ for some large $R > 0$. If $\mu(\iota^{-1}(K \cap (\mathcal{UE} \times \mathbb{R})))$ is assumed to be finite, then $\iota_*\mu(K)$ is finite as well. In conclusion, locally finite measures on \mathcal{ML} supported on $\mathcal{UE} \times \mathbb{R}$ are also locally finite when viewed on $\partial^h\mathcal{T} \times \mathbb{R}$. Since $\partial^h\mathcal{T} \times \mathbb{R}$ is Polish, such measures are Radon.

Hence, if Γ is of divergence type, then we can pullback the measure μ_{Γ} on $\Lambda_c(\Gamma) \times \mathbb{R}$ defined in Definition 7.1, via the embedding $\iota \circ \text{HM}$. This gives the measure on \mathcal{R}_{Γ} which is the same as the one constructed in Section 1.4, also denoted by μ_{Γ} by abuse of notation.

Therefore, together with the non-arithmeticity in Theorem 9.1, the ergodicity (Theorem 1.2) and the unique ergodicity (Theorem 1.3) follow from Theorem 8.1 and Theorem 7.4 respectively. Note that as in Theorem 8.2, an analogous ergodicity theorem for normal subgroups can also be deduced.

9.3. Convex cocompact subgroups of the mapping class group. In [FM02], Farb and Mosher introduced the following notion:

Definition 9.2. A finitely generated subgroup $\Gamma < \text{Mod}(S)$ is called *convex cocompact* if Γ has a quasi-convex orbit in \mathcal{T} .

Some important features of convex cocompact subgroups are as follows:

Theorem 9.3 ([FM02, Theorem 1.1]). *Let $\Gamma < \text{Mod}(S)$ be a convex cocompact subgroup. Then*

- (1) Γ is a hyperbolic group,
- (2) there exists a Γ -equivariant embedding

$$\partial\Gamma \xrightarrow{\iota} \mathcal{UE} \subset \mathcal{PML}$$

where $\partial\Gamma$ denotes the Gromov boundary of Γ , and,

- (3) Γ acts cocompactly on its weak-hull $\text{WH}(\Gamma) \subset \mathcal{T}$, the union of all bi-infinite Teichmüller geodesics with endpoints in $\Lambda(\Gamma) := \iota(\partial\Gamma)$.

We now discuss the divergence-type of non-elementary convex cocompact subgroups. Theorem 9.3 asserts that every non-elementary convex cocompact subgroup $\Gamma < \text{Mod}(S)$ is Gromov hyperbolic when endowed with either a word metric or the Teichmüller metric on its orbit. By [Coo93, Théorème 7.2], Γ has *purely exponential growth*, i.e., there exists $C > 1$ (depending on the choice of the basepoint x_0) such that

$$\frac{1}{C} e^{\delta_{\Gamma} r} \leq \#\{g \in \Gamma : d_{\mathcal{T}}(x_0, gx_0) < r\} \leq C e^{\delta_{\Gamma} r} \quad \text{for all } r > C.$$

This implies that Γ is of divergence type.

In addition, it follows from the work of McCarthy–Papadopoulos [MP89] that the set $\Lambda(\Gamma) \subset \mathcal{PML}$ is the unique minimal subset of Γ , and moreover the Γ -action on the complement $\mathcal{PML} \setminus \Lambda(\Gamma)$ is properly discontinuous. In this regard, the set $\Lambda(\Gamma) \subset \mathcal{PML}$ can be viewed as the *limit set* of Γ .

Furthermore, the cocompactness in Theorem 9.3(3) and the embedding in Equation (9.1) give a characterization of the recurrence locus for Γ :

$$(9.2) \quad \mathcal{R}_{\Gamma} = \{\xi \in \mathcal{ML} : [\xi] \in \Lambda(\Gamma)\}.$$

Hence, the proper discontinuity of the Γ -action on $\mathcal{PML} \setminus \Lambda(\Gamma)$ implies that the Γ -action on $\mathcal{ML} \setminus \mathcal{R}_{\Gamma}$ is properly discontinuous as well. Thus any Γ -invariant ergodic measure on $\mathcal{ML} \setminus \mathcal{R}_{\Gamma}$ is a counting measure on a single Γ -orbit, up to a constant multiple. Since Γ is of divergence type, Theorem 1.6 follows from Theorem 1.3.

10. CLASSIFICATION OF ORBIT CLOSURES

In this section, we prove the following classification of orbit closures:

Theorem 10.1. *Let $\Gamma < \text{Mod}(S)$ be a non-elementary convex cocompact subgroup. Then for each $\xi \in \mathcal{ML}$, either*

$$\Gamma \cdot \xi \text{ is discrete} \quad \text{or} \quad \overline{\Gamma \cdot \xi} = \mathcal{R}_{\Gamma}.$$

More precisely,

- if $\xi \notin \mathcal{R}_{\Gamma}$, then $\Gamma \cdot \xi$ is discrete.

- if $\xi \in \mathcal{R}_\Gamma$, then $\overline{\Gamma \cdot \xi} = \mathcal{R}_\Gamma$.

As mentioned earlier, the Γ -action on $\mathcal{PML} \setminus \Lambda(\Gamma)$ is properly discontinuous [MP89]. Hence, in the viewpoint of the characterization of \mathcal{R}_Γ in Equation (9.2), it suffices to show that the Γ -action on \mathcal{R}_Γ is minimal.

We do this by adjusting a standard argument of classifying horospherical orbit closures for Kleinian groups, which is based on nice shapes of horospheres in hyperbolic spaces. As we do not have such a well-shaped horosphere in the Teichmüller space, we use a recent theory of expanding coarse cocycles for convergence group actions by Blayac–Canary–Zhu–Zimmer [BCZZ24] and an interpretation of the action of convex cocompact subgroups as expanding coarse cocycles given by the second author and Zimmer [KZ25].

From the viewpoint of the characterization in Equation (9.2) and the discussion in Section 5.6, the minimality of the Γ -action on \mathcal{R}_Γ follows once we show that the Γ -action on $\Lambda(\Gamma) \times \mathbb{R}$ given by

$$g \cdot (\xi, t) = (g\xi, t + \beta_\xi(g^{-1}x_0, x_0))$$

is minimal, recalling that $x_0 \in \mathcal{T}$ is a fixed basepoint.

Given a pseudo-Anosov $g \in \text{Mod}(S)$, we denote by $g^+, g^- \in \mathcal{PML}$ its attracting and repelling fixed points, respectively.

Lemma 10.2. *For each $(\xi, t) \in \Lambda(\Gamma) \times \mathbb{R}$ and a pseudo-Anosov $g \in \Gamma$, there exists $s \in \mathbb{R}$ such that $(g^+, s) \in \overline{\Gamma \cdot (\xi, t)}$ or $(g^-, s) \in \overline{\Gamma \cdot (\xi, t)}$.*

Proof. By Theorem 9.3(3), there exists a sequence $\{g_n\}_{n \in \mathbb{N}} \subset \Gamma$ such that $g_n x_0 \rightarrow \xi$ within a bounded neighborhood of a Teichmüller geodesic ray towards $\xi \in \mathcal{UE}$. This implies

$$(10.1) \quad \beta_\xi(g_n x_0, x_0) \rightarrow -\infty \quad \text{as } n \rightarrow +\infty.$$

This also implies the conical convergence in the Cayley graph of a hyperbolic group Γ , where $\partial\Gamma$ and $\Lambda(\Gamma) = \iota(\partial\Gamma)$ are identified by Theorem 9.3(2). After passing to a subsequence, we may assume that $g_n^{-1}\xi$ converges to some $\zeta \in \Lambda(\Gamma)$. Suppose first that $g^- \neq \zeta$.

Fix an open neighborhood $U \subset \Lambda(\Gamma)$ of ζ such that $g^- \notin \overline{U}$. Then there exists a compact subset K in the Cayley graph of Γ such that every bi-infinite geodesic with endpoints $g^- \in \partial\Gamma$ and a point in \overline{U} intersects K . Passing to a subsequence, we may assume that $g_n^{-1}\xi \in U$ for all $n \in \mathbb{N}$. This implies

$$(10.2) \quad \sup_{k, n \in \mathbb{N}} |\beta_{g_n^{-1}\xi}(g^{-k}x_0, x_0) - d(g^{-k}x_0, x_0)| < +\infty$$

(see [KZ25, Proposition 12.6] and [BCZZ24, Section 5] for details).

Observe that for $k, n \in \mathbb{N}$,

$$g^k g_n^{-1}(\xi, t) = (g^k g_n^{-1}\xi, t + \beta_\xi(g_n x_0, x_0) + \beta_{g_n^{-1}\xi}(g^{-k}x_0, x_0)).$$

Then by Equation (10.2), for each $n \in \mathbb{N}$, we can choose $k_n \in \mathbb{N}$ so that the sequence

$$t + \beta_\xi(g_n x_0, x_0) + \beta_{g_n^{-1}\xi}(g^{-k_n} x_0, x_0) \quad \text{is bounded.}$$

By Equation (10.1), we also have $k_n \rightarrow +\infty$ as $n \rightarrow +\infty$.

After passing to a subsequence, we can set

$$s := \lim_{n \rightarrow +\infty} (t + \beta_\xi(g_n x_0, x_0) + \beta_{g_n^{-1}\xi}(g^{-k_n} x_0, x_0)).$$

Since $g_n^{-1}\xi \in U$ and $g^- \notin \bar{U}$, we have

$$g^{k_n} g_n^{-1} \xi \rightarrow g^+ \quad \text{as } n \rightarrow +\infty.$$

This finishes the proof in this case.

If $g^- = \zeta$, then we have $g^+ \neq \zeta$. Hence, we can apply the same argument replacing g with g^{-1} and this completes the proof. \square

Proof of Theorem 10.1. For each $s \in \mathbb{R}$, consider the map

$$\begin{aligned} a_s : \Lambda(\Gamma) \times \mathbb{R} &\rightarrow \Lambda(\Gamma) \times \mathbb{R} \\ (\xi, t) &\mapsto (\xi, t + s) \end{aligned}$$

which gives the \mathbb{R} -action on $\Lambda(\Gamma) \times \mathbb{R}$, commuting with the Γ -action. Hence, we can consider it as a right \mathbb{R} -action. Note that this was denoted by T_s in Section 7.5; we use the new notation to consider it as an action on the right.

To prove the desired minimality, we fix $(\xi, t) \in \Lambda(\Gamma) \times \mathbb{R}$ and $\epsilon > 0$. By the non-arithmeticity in Theorem 9.1, there exist pseudo-Anosovs $g_1, \dots, g_k \in \Gamma$ such that the additive subgroup $\langle \tau_{g_1}, \dots, \tau_{g_k} \rangle \subset \mathbb{R}$ generated by their $d\mathcal{T}$ -translation lengths is ϵ -dense.

By Lemma 10.2, after replacing g_1 with g_1^{-1} if necessary, we have

$$(g_1^+, s_1) \in \overline{\Gamma \cdot (\xi, t)} \quad \text{for some } s_1 \in \mathbb{R}.$$

Then for every $j \in \mathbb{Z}$,

$$g_1^j (g_1^+, s_1) = (g_1^+, s_1 + \beta_{g_1^+}(g_1^{-j} x_0, x_0)) = (g_1^+, s_1 + j\tau_{g_1}) = (g_1^+, s_1) a_{j\tau_{g_1}}$$

belongs to $\Gamma \cdot (g_1^+, s_1) \subset \overline{\Gamma \cdot (\xi, t)}$. This implies

$$\overline{\Gamma \cdot (g_1^+, s_1) a_{\langle \tau_{g_1} \rangle}} \subset \overline{\Gamma \cdot (\xi, t)}.$$

Applying the same argument to $\overline{\Gamma \cdot (g_1^+, s_1)}$, we inductively obtain that for some $s_k \in \mathbb{R}$,

$$\overline{\Gamma \cdot (g_k^+, s_k) a_{\langle \tau_{g_1}, \dots, \tau_{g_k} \rangle}} \subset \overline{\Gamma \cdot (\xi, t)}.$$

Now let $(\zeta, s) \in \Lambda(\Gamma) \times \mathbb{R}$ be arbitrary. Since the Γ -action on $\Lambda(\Gamma)$ is minimal, there exists a sequence $\{h_n\}_{n \in \mathbb{N}} \subset \Gamma$ such that $h_n g_k^+ \rightarrow \zeta$ as $n \rightarrow +\infty$. Since $\langle \tau_{g_1}, \dots, \tau_{g_k} \rangle$ is ϵ -dense, for each $n \in \mathbb{N}$, there exists $t_n \in \langle \tau_{g_1}, \dots, \tau_{g_k} \rangle$ such that

$$|s - (s_k + \beta_{g_k^+}(h_n^{-1} x_0, x_0) + t_n)| < \epsilon.$$

Hence, after passing to a subsequence, the sequence $h_n(g_k^+, s_k)a_{t_n}$ converges to $(\zeta, s') \in \overline{\Gamma \cdot (\xi, t)}$ for some $s' \in \mathbb{R}$ with $|s - s'| \leq \epsilon$. Since this holds for each $\epsilon > 0$, we have $(\zeta, s) \in \overline{\Gamma \cdot (\xi, t)}$. This finishes the proof. \square

REFERENCES

- [ABEM12] Jayadev Athreya, Alexander Bufetov, Alex Eskin, and Maryam Mirzakhani. Lattice point asymptotics and volume growth on Teichmüller space. *Duke Math. J.*, 161(6):1055–1111, 2012.
- [ACT15] Goulmira N. Arzhantseva, Christopher H. Cashen, and Jing Tao. Growth tight actions. *Pacific J. Math.*, 278(1):1–49, 2015.
- [ANSS02] Jon Aaronson, Hitoshi Nakada, Omri Sarig, and Rita Solomyak. Invariant measures and asymptotics for some skew products. *Israel J. Math.*, 128:93–134, 2002.
- [BCZZ24] Pierre-Louis Blayac, Richard Canary, Feng Zhu, and Andrew Zimmer. Patterson-Sullivan theory for coarse cocycles. *arXiv preprint arXiv:2404.09713*, 2024.
- [BF09] Mladen Bestvina and Koji Fujiwara. A characterization of higher rank symmetric spaces via bounded cohomology. *Geom. Funct. Anal.*, 19(1):11–40, 2009.
- [Bou95] Marc Bourdon. Structure conforme au bord et flot géodésique d’un CAT(−1)-espace. *Enseign. Math. (2)*, 41(1-2):63–102, 1995.
- [BS24] Frederik Benirschke and Carlos A. Serván. Isometric embeddings of Teichmüller spaces are covering constructions. *Adv. Math.*, 452:Paper No. 109817, 25, 2024.
- [Bur90] Marc Burger. Horocycle flow on geometrically finite surfaces. *Duke Math. J.*, 61(3):779–803, 1990.
- [CCT25] Kunal Chawla, Inhyeok Choi, and Giulio Tiozzo. Genericity of contracting geodesics in groups. *Groups, Geometry, and Dynamics*, 2025.
- [CDP90] M. Coornaert, T. Delzant, and A. Papadopoulos. *Géométrie et théorie des groupes*, volume 1441 of *Lecture Notes in Mathematics*. Springer-Verlag, Berlin, 1990. Les groupes hyperboliques de Gromov. [Gromov hyperbolic groups], With an English summary.
- [Cho24] Inhyeok Choi. Contracting isometries and differentiability of the escape rate. *arXiv preprint arXiv:2403.09992*, 2024. To appear in *Probab. Theory Related Fields*.
- [CK26a] Inhyeok Choi and Dongryul M. Kim. Classification of horospherical invariant measures in higher rank: The Full Story. *arXiv preprint arXiv:2601.22668*, 2026.
- [CK26b] Inhyeok Choi and Dongryul M. Kim. Non-arithmeticity of length spectra of subgroups of mapping class groups. *arXiv preprint a605.13064*, 2026.
- [Coo93] Michel Coornaert. Mesures de Patterson-Sullivan sur le bord d’un espace hyperbolique au sens de Gromov. *Pacific J. Math.*, 159(2):241–270, 1993.
- [Cou24] Rémi Coulon. Patterson-Sullivan theory for groups with a strongly contracting element. *Ergodic Theory Dynam. Systems*, 44(11):3216–3271, 2024.
- [Dal99] Françoise Dal’bo. Remarques sur le spectre des longueurs d’une surface et comptages. *Bol. Soc. Brasil. Mat. (N.S.)*, 30(2):199–221, 1999.
- [Dan78] S. G. Dani. Invariant measures of horospherical flows on noncompact homogeneous spaces. *Invent. Math.*, 47(2):101–138, 1978.
- [Dan81] S. G. Dani. Invariant measures and minimal sets of horospherical flows. *Invent. Math.*, 64(2):357–385, 1981.

- [DP98] Françoise Dal’bo and Marc Peigné. Some negatively curved manifolds with cusps, mixing and counting. *J. Reine Angew. Math.*, 497:141–169, 1998.
- [EK74a] Clifford J. Earle and Irwin Kra. On holomorphic mappings between Teichmüller spaces. In *Contributions to analysis (a collection of papers dedicated to Lipman Bers)*, pages 107–124. 1974.
- [EK74b] Clifford J. Earle and Irwin Kra. On isometries between Teichmüller spaces. *Duke Math. J.*, 41:583–591, 1974.
- [ES16] Viveka Erlandsson and Juan Souto. Counting curves in hyperbolic surfaces. *Geom. Funct. Anal.*, 26(3):729–777, 2016.
- [FLP79] Albert Fathi, François Laudenbach, and Valentin Poénaru. *Travaux de Thurston sur les surfaces*, volume 66 of *Astérisque*. Société Mathématique de France, Paris, 1979. Séminaire Orsay, With an English summary.
- [FM02] Benson Farb and Lee Mosher. Convex cocompact subgroups of mapping class groups. *Geom. Topol.*, 6:91–152, 2002.
- [FM12] Benson Farb and Dan Margalit. *A primer on mapping class groups*, volume 49 of *Princeton Mathematical Series*. Princeton University Press, Princeton, NJ, 2012.
- [Fur73] Harry Furstenberg. The unique ergodicity of the horocycle flow. In *Recent advances in topological dynamics (Proc. Conf. Topological Dynamics, Yale Univ., New Haven, Conn., 1972; in honor of Gustav Arnold Hedlund)*, Lecture Notes in Math., Vol. 318, pages 95–115. Springer, Berlin-New York, 1973.
- [Gek13] Ilya Gekhtman. Dynamics of convex cocompact subgroups of mapping class groups. *arXiv preprint arXiv:1204.1741*, 2013.
- [GM91] Frederick P. Gardiner and Howard Masur. Extremal length geometry of Teichmüller space. *Complex Variables Theory Appl.*, 16(2-3):209–237, 1991.
- [GM23] Ilya Gekhtman and Biao Ma. Dynamics of subgroups of mapping class groups. *arXiv preprint arXiv:2311.03779*, 2023.
- [GS19] Anthony Genevois and Arnaud Stocker. Partially CAT(−1) groups are acylindrically hyperbolic. *Bull. Soc. Math. France*, 147(3):377–394, 2019.
- [Ham09] Ursula Hamenstädt. Invariant Radon measures on measured lamination space. *Invent. Math.*, 176(2):223–273, 2009.
- [HM79] John Hubbard and Howard Masur. Quadratic differentials and foliations. *Acta Math.*, 142(3-4):221–274, 1979.
- [Iva01] Nikolai V. Ivanov. Isometries of Teichmüller spaces from the point of view of Mostow rigidity. In *Topology, ergodic theory, real algebraic geometry*, volume 202 of *Amer. Math. Soc. Transl. Ser. 2*, pages 131–149. Amer. Math. Soc., Providence, RI, 2001.
- [Ker80] Steven P. Kerckhoff. The asymptotic geometry of Teichmüller space. *Topology*, 19(1):23–41, 1980.
- [Kim06] In Kang Kim. Length spectrum in rank one symmetric space is not arithmetic. *Proc. Amer. Math. Soc.*, 134(12):3691–3696, 2006.
- [KM96] Vadim A. Kaimanovich and Howard Masur. The Poisson boundary of the mapping class group. *Invent. Math.*, 125(2):221–264, 1996.
- [KZ25] Dongryul M. Kim and Andrew Zimmer. Rigidity for Patterson–Sullivan systems with applications to random walks and entropy rigidity. *arXiv preprint arXiv:2505.16556*, 2025.
- [LL22] Or Landesberg and Elon Lindenstrauss. On Radon measures invariant under horospherical flows on geometrically infinite quotients. *Int. Math. Res. Not. IMRN*, (15):11602–11641, 2022.
- [LLLO23] Or Landesberg, Minju Lee, Elon Lindenstrauss, and Hee Oh. Horospherical invariant measures and a rank dichotomy for Anosov groups. *J. Mod. Dyn.*, 19:331–362, 2023.

- [LM08] Elon Lindenstrauss and Maryam Mirzakhani. Ergodic theory of the space of measured laminations. *Int. Math. Res. Not. IMRN*, (4):Art. ID rnm126, 49, 2008.
- [LS07] François Ledrappier and Omri Sarig. Invariant measures for the horocycle flow on periodic hyperbolic surfaces. *Israel J. Math.*, 160:281–315, 2007.
- [LS14] Lixin Liu and Weixu Su. The horofunction compactification of the Teichmüller metric. In *Handbook of Teichmüller theory. Vol. IV*, volume 19 of *IRMA Lect. Math. Theor. Phys.*, pages 355–374. Eur. Math. Soc., Zürich, 2014.
- [Mas80] Howard Masur. Uniquely ergodic quadratic differentials. *Comment. Math. Helv.*, 55(2):255–266, 1980.
- [Mas82a] Howard Masur. Interval exchange transformations and measured foliations. *Ann. of Math. (2)*, 115(1):169–200, 1982.
- [Mas82b] Howard Masur. Two boundaries of Teichmüller space. *Duke Math. J.*, 49(1):183–190, 1982.
- [Mas85] Howard Masur. Ergodic actions of the mapping class group. *Proc. Amer. Math. Soc.*, 94(3):455–459, 1985.
- [Mas92] Howard Masur. Hausdorff dimension of the set of nonergodic foliations of a quadratic differential. *Duke Math. J.*, 66(3):387–442, 1992.
- [Mas09] Howard Masur. Geometry of Teichmüller space with the Teichmüller metric. In *Surveys in differential geometry. Vol. XIV. Geometry of Riemann surfaces and their moduli spaces*, volume 14 of *Surv. Differ. Geom.*, pages 295–313. Int. Press, Somerville, MA, 2009.
- [McC85] John McCarthy. A “Tits-alternative” for subgroups of surface mapping class groups. *Trans. Amer. Math. Soc.*, 291(2):583–612, 1985.
- [Min96] Yair N. Minsky. Quasi-projections in Teichmüller space. *J. Reine Angew. Math.*, 473:121–136, 1996.
- [Mir08a] Maryam Mirzakhani. Ergodic theory of the earthquake flow. *Int. Math. Res. Not. IMRN*, (3):Art. ID rnm116, 39, 2008.
- [Mir08b] Maryam Mirzakhani. Growth of the number of simple closed geodesics on hyperbolic surfaces. *Ann. of Math. (2)*, 168(1):97–125, 2008.
- [Miy13] Hideki Miyachi. Teichmüller rays and the Gardiner-Masur boundary of Teichmüller space II. *Geom. Dedicata*, 162:283–304, 2013.
- [Mos02] Lee Mosher. Schottky subgroups of mapping class groups and the geometry of surface-by-free groups. In *Rigidity in dynamics and geometry (Cambridge, 2000)*, pages 309–319. Springer, Berlin, 2002.
- [MP89] John McCarthy and Athanase Papadopoulos. Dynamics on Thurston’s sphere of projective measured foliations. *Comment. Math. Helv.*, 64(1):133–166, 1989.
- [MS93] Albert Marden and Kurt Strebel. A characterization of Teichmüller differentials. *J. Differential Geom.*, 37(1):1–29, 1993.
- [MT18] Joseph Maher and Giulio Tiozzo. Random walks on weakly hyperbolic groups. *J. Reine Angew. Math.*, 742:187–239, 2018.
- [MW02] Yair Minsky and Barak Weiss. Nondivergence of horocyclic flows on moduli space. *J. Reine Angew. Math.*, 552:131–177, 2002.
- [Oh25] Hee Oh. Dynamics and Rigidity through the Lens of Circles. *arXiv preprint arXiv:2510.10771*, 2025.
- [Pat76] S. J. Patterson. The limit set of a Fuchsian group. *Acta Math.*, 136(3-4):241–273, 1976.
- [Rob03] Thomas Roblin. Ergodicité et équidistribution en courbure négative. *Mém. Soc. Math. Fr. (N.S.)*, (95):vi+96, 2003.
- [Roy71] H. L. Royden. Automorphisms and isometries of Teichmüller space. In *Advances in the Theory of Riemann Surfaces (Proc. Conf., Stony Brook, N.Y., 1969)*, Ann. of Math. Studies, No. 66, pages 369–383. Princeton Univ. Press, Princeton, N.J., 1971.

- [Sar04] Omri Sarig. Invariant Radon measures for horocycle flows on abelian covers. *Invent. Math.*, 157(3):519–551, 2004.
- [Sch77] Klaus Schmidt. *Cocycles on ergodic transformation groups*, volume Vol. 1 of *Macmillan Lectures in Mathematics*. Macmillan Co. of India, Ltd., Delhi, 1977.
- [Sis13] Alessandro Sisto. Projections and relative hyperbolicity. *Enseign. Math. (2)*, 59(1-2):165–181, 2013.
- [Sis18] Alessandro Sisto. Contracting elements and random walks. *J. Reine Angew. Math.*, 742:79–114, 2018.
- [ST21] Barbara Schapira and Samuel Tapie. Regularity of entropy, geodesic currents and entropy at infinity. *Ann. Sci. Éc. Norm. Supér. (4)*, 54(1):1–68, 2021.
- [Sul79] Dennis Sullivan. The density at infinity of a discrete group of hyperbolic motions. *Inst. Hautes Études Sci. Publ. Math.*, (50):171–202, 1979.
- [Thu88] William P. Thurston. On the geometry and dynamics of diffeomorphisms of surfaces. *Bull. Amer. Math. Soc. (N.S.)*, 19(2):417–431, 1988.
- [Thu97] William P. Thurston. *Three-dimensional geometry and topology. Vol. 1*, volume 35 of *Princeton Mathematical Series*. Princeton University Press, Princeton, NJ, 1997. Edited by Silvio Levy.
- [Thu22] William P. Thurston. *The geometry and topology of three-manifolds. Vol. IV*. American Mathematical Society, Providence, RI, [2022] ©2022. Edited and with a preface by Steven P. Kerckhoff and a chapter by J. W. Milnor.
- [Vee77] William A. Veech. Unique ergodicity of horospherical flows. *Amer. J. Math.*, 99(4):827–859, 1977.
- [Vee82] William A. Veech. Gauss measures for transformations on the space of interval exchange maps. *Ann. of Math. (2)*, 115(1):201–242, 1982.
- [Vee89] W. A. Veech. Teichmüller curves in moduli space, Eisenstein series and an application to triangular billiards. *Invent. Math.*, 97(3):553–583, 1989.
- [Wal19] Cormac Walsh. The asymptotic geometry of the Teichmüller metric. *Geom. Dedicata*, 200:115–152, 2019.
- [Yan14] Wen-yuan Yang. Growth tightness for groups with contracting elements. *Math. Proc. Cambridge Philos. Soc.*, 157(2):297–319, 2014.
- [Yan19] Wen-yuan Yang. Statistically convex-cocompact actions of groups with contracting elements. *Int. Math. Res. Not. IMRN*, (23):7259–7323, 2019.
- [Yan20] Wen-yuan Yang. Genericity of contracting elements in groups. *Math. Ann.*, 376(3-4):823–861, 2020.
- [Yan24] Wen-yuan Yang. Conformal dynamics at infinity for groups with contracting elements. *arXiv preprint arXiv:2208.04861*, 2024.

SCHOOL OF MATHEMATICS, KIAS, HOEGI-RO 85, DONGDAEMUN-GU, SEOUL 02455, SOUTH KOREA

Email address: inhyeokchoi48@gmail.com

DEPARTMENT OF MATHEMATICS, YALE UNIVERSITY, NEW HAVEN, CT 06511

Email address: dongryul.kim97@gmail.com